



*jordanfishwick*

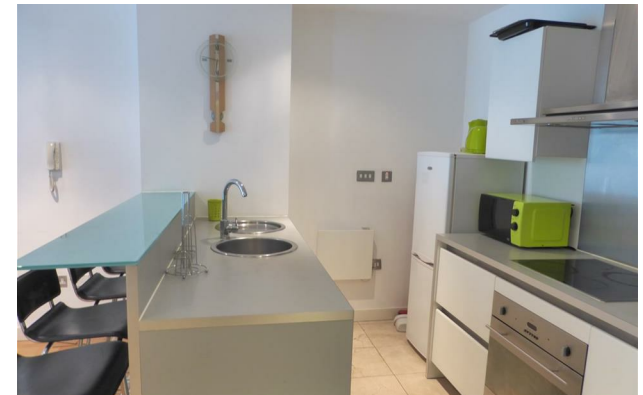
23 Church Street, Northern Quarter, M4  
£1,100 Per Calendar Month





## Church Street Manchester M4 1PY

£1,100 Per Calendar Month




### The Property

Available Late January. Larger than average, bright and spacious one bedroom apartment located in the heart of Manchester's Northern Quarter. The property is of a good standard throughout and features an open plan living space, kitchen with breakfast bar, integrated dishwasher and ceramic hob. There is a stylish 3pc bathroom with mixer shower, and there is a large double bedroom with floor to ceiling windows. Fantastic location and furnished throughout. Sorry, no pets. EPC Rating B. Tax Band C.

**\*VIDEO/ PHOTO OFFERS NOT ACCEPTED - PLEASE CALL TO BOOK A VIEWING\***

- Available Late January
- One bed Apartment
- City Centre Location
- Opposite to the Arndale Centre
- Tax Band C
- EPC Rating B
- No Parking
- Furnished
- Close to Transport Links



| Energy Efficiency Rating                    |           |   |
|---|-----------|---|
|   | Current   | Potential   |
| Very energy efficient - lower running costs |           |   |
| (92 plus) <b>A</b>                          |           |   |
| (81-91) <b>B</b>                            |           |   |
| (69-80) <b>C</b>                            |           | <b>76</b>   |
| (55-68) <b>D</b>                            | <b>66</b> |   |
| (39-54) <b>E</b>                            |           |   |
| (21-38) <b>F</b>                            |           |   |
| (1-20) <b>G</b>                             |           |   |
| Not energy efficient - higher running costs |           |   |
| <b>England &amp; Wales</b>                  |           | EU Directive 2002/91/EC  |





These particulars are believed to be accurate but they are not guaranteed and do not form a contract. Neither Jordan Fishwick nor the vendor or lessor accept any responsibility in respect of these particulars, which are not intended to be statements or representations of fact and any intending purchaser or lessee must satisfy himself by inspection or otherwise as to the correctness of each of the statements contained in these particulars. Any floorplans on this brochure are for illustrative purposes only and are not necessarily to scale.

Offices at: Offices at Chorlton, Didsbury, Disley, Hale, Glossop, Macclesfield, Manchester Deansgate, Manchester Whitworth Street, New Mills, Sale, Wilmslow and Withington