



*jordanfishwick*

Apt 307 The Lock Building, Whitworth  
£1,700 Per Calendar Month





### The Property

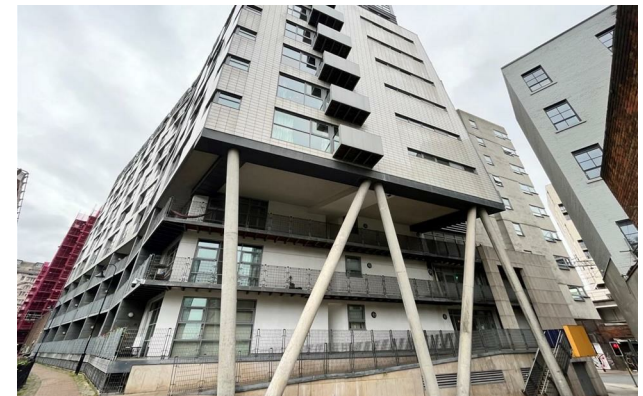
\*PLEASE NOTE - THERE IS BUILDING REMEDIAL WORKS OCCURING, SO DISRUPTIONS MAY HAPPEN\*

Available NOW. Jordan Fishwick are pleased to present this large THREE BEDROOM apartment located in the heart of Central Manchester, just a 2 minute walk from Oxford Rd (close to Universities). The apartment is located on the third floor of the development and boasts water views from the balcony, lifts to all floors and a 24 hour concierge. The apartment briefly comprises of: entrance hall with utility room, open plan living room/kitchen leading to balcony, 2 double bedrooms, master with en-suite, small double room, and a well appointed bathroom. NO PARKING. Tax Band E. EPC Rating C.

\*VIDEO/ PHOTO OFFERS NOT ACCEPTED - PLEASE CALL TO BOOK A VIEWING\*

## The Lock Building Manchester M1 5BD


£1,700 Per Calendar Month





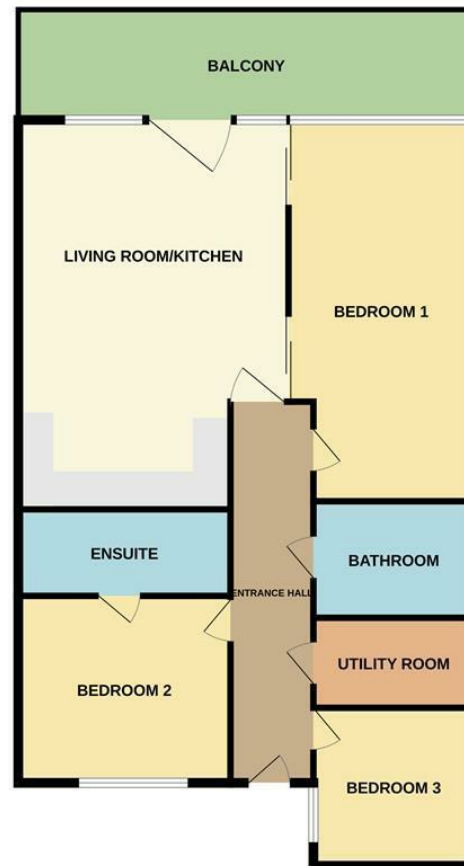
- Available Now
- Fully Furnished
- Three Bedroom Apt
- Two Bathrooms
- Large Laundry Room
- EPC Rating C
- Tax Band E
- No Parking
- Balcony - Water Views



Energy Efficiency Rating		
	Current	Potential
Very energy efficient - lower running costs		
(92 plus) <b>A</b>		
(81-91) <b>B</b>		
(69-80) <b>C</b>	<b>72</b>	<b>72</b>
(55-68) <b>D</b>		
(39-54) <b>E</b>		
(21-38) <b>F</b>		
(1-20) <b>G</b>		
Not energy efficient - higher running costs		
<b>England &amp; Wales</b>		EU Directive 2002/91/EC 



THIRD FLOOR



Measurements are approximate. Not to scale. Illustrative purposes only.  
Made with Metropix ©2023



These particulars are believed to be accurate but they are not guaranteed and do not form a contract. Neither Jordan Fishwick nor the vendor or lessor accept any responsibility in respect of these particulars, which are not intended to be statements or representations of fact and any intending purchaser or lessee must satisfy himself by inspection or otherwise as to the correctness of each of the statements contained in these particulars. Any floorplans on this brochure are for illustrative purposes only and are not necessarily to scale.

Offices at: Offices at Chorlton, Didsbury, Disley, Hale, Glossop, Macclesfield, Manchester Deansgate, Manchester Whitworth Street, New Mills, Sale, Wilmslow and Withington