



*jordanfishwick*

Apt 1110 Jefferson Place, 1 Fernie Street,  
£1,050 Per Calendar Month





### The Property

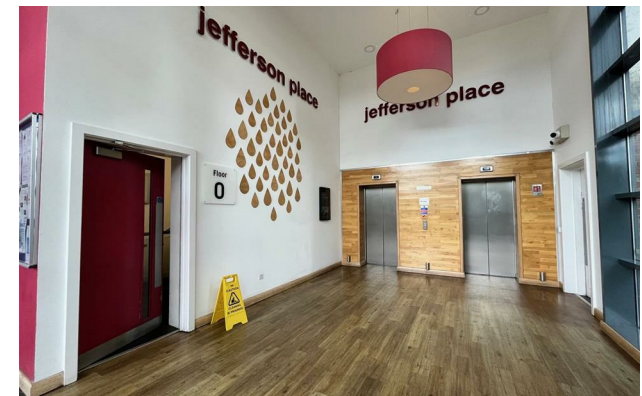
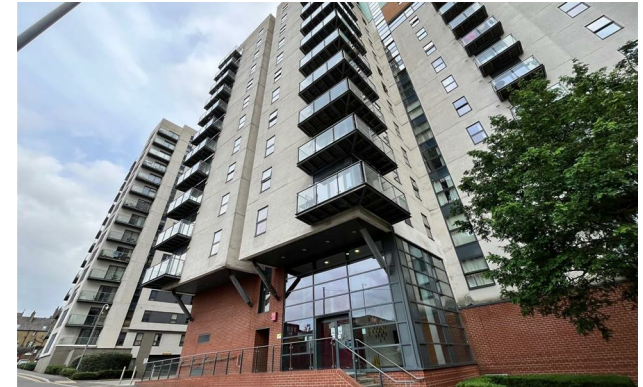
Available Late October. This 11th floor apartment features contemporary living space and Jefferson Place, is a development by Crosby homes set amongst an urban oasis in Manchester's Green quarter. This spacious two double bedroom apartment is perfect for the busy city dweller looking for a relaxed and contemporary living environment. The apartment benefits from high specification fixtures and fitting throughout with an open plan living/dining area, one double bedroom and a main bathroom. Furnished. Council Tax Band C. EPC Rating C. No pets. No parking.

REPOSIT (Nil Deposit option) available for this property.

\*VIDEO/ PHOTO OFFERS NOT ACCEPTED - PLEASE CALL TO BOOK A VIEWING\*

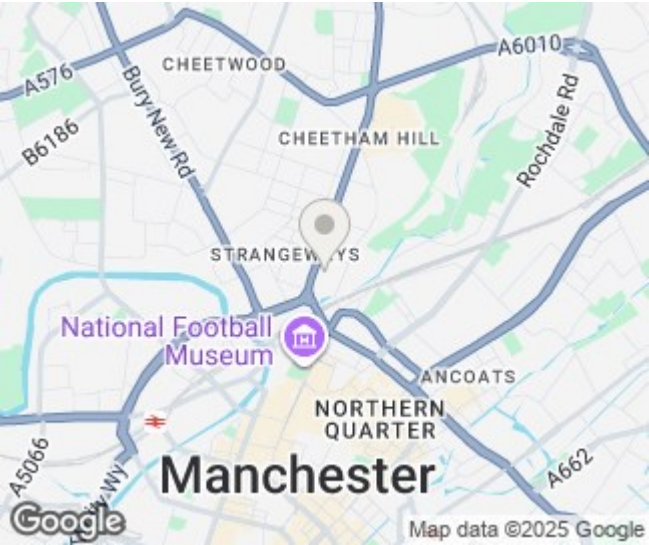
## Jefferson Place Manchester M4 4BN

£1,050 Per Calendar Month





- Available Late October
- 11th Floor
- 1 bed/ 1 bath
- FULLY FURNISHED
- Tax Band C
- EPC Rating C
- NO PARKING
- Close to City Centre
- Transport Links nearby



Energy Efficiency Rating		
	Current	Potential
Very energy efficient - lower running costs		
(92 plus) <b>A</b>		
(81-91) <b>B</b>		
(69-80) <b>C</b>		
(55-68) <b>D</b>		
(39-54) <b>E</b>		
(21-38) <b>F</b>		
(1-20) <b>G</b>	<b>1</b>	<b>1</b>
Not energy efficient - higher running costs		
<b>England &amp; Wales</b>	EU Directive 2002/91/EC	





These particulars are believed to be accurate but they are not guaranteed and do not form a contract. Neither Jordan Fishwick nor the vendor or lessor accept any responsibility in respect of these particulars, which are not intended to be statements or representations of fact and any intending purchaser or lessee must satisfy himself by inspection or otherwise as to the correctness of each of the statements contained in these particulars. Any floorplans on this brochure are for illustrative purposes only and are not necessarily to scale.

Offices at: Offices at Chorlton, Didsbury, Disley, Hale, Glossop, Macclesfield, Manchester Deansgate, Manchester Whitworth Street, New Mills, Sale, Wilmslow and Withington