



Apt 203 Crusader Mill, 70 Chapeltown Street, East Piccadilly, Manchester, M1 2EW

This stunning two-bedroom duplex apartment occupies the top floor of the sought-after Crusader Mill, combining modern luxury with original character.

Step into a spacious entrance hall with custom-fitted shelving, leading to a master bedroom with en-suite, a second generous double bedroom, and a stylish family bathroom.

Upstairs, the impressive open-plan living, kitchen, and dining area awaits — a bright and airy space featuring exposed beams, original supports, and five skylights that flood the room with natural light. The contemporary kitchen boasts a striking island breakfast bar, perfect for entertaining.

The current owners have thoughtfully added bespoke cabinetry and wardrobes, maximizing storage and enhancing the home's sleek aesthetic.

Price £520,000

Viewing arrangements

Viewing strictly by appointment through the agent
245 Deansgate, Manchester, M3 4EN 0161 833 9499 opt 3

The Building

Crusader Mill was converted by Capital & Centric and is a home from home development. With many of its original features retained and exposed brickwork finish, its one of the standout conversions in the City, located only a 5 minute walk to Piccadilly Station and the lively Northern Quarter on its doorstep. Communal BBQ area, communal garden and 24 concierge desk. The development is pet friendly.

Entrance Hall

Engineered wooden flooring with glass and wooden staircase leading to the main living room. Customised bespoke fitted shelving units have been added with strip lighting below. Electric heater, double cupboard housing the hot water system. Access to all rooms

Master Bedroom

15'2" x 10'2"

With two large sash windows and engineered wooden flooring, Bespoke fitted wardrobes and storage units. Electric heater

En-Suite

7'1" x 4'2"

Walk in shower with rain and body shower attachment. Wash hand basin, w.c with chrome heated towel rail. Tiled floor and part tiled walls.

Bedroom Two

11'10" x 11'7"

Large low level double glazed window and engineered wooden flooring, Bespoke fitted wardrobes and storage units. Fitted full length Oak desk and storage above. Electric heater

Bathroom

7'0" x 5'6"

This three piece suite has a rain and body shower attachment over the bath, wash hand basin and w.c. Fitted mirror unit and tiled flooring and par tiled walls. Chrome heated towel rail.

Upper Level

Living/Kitchen/Dining Room

28'6" x 26'8" max

This impressive room has five skylights and original exposed beams and roof trusses. Engineered Oak flooring complements these whilst the luxury kitchen with appliances and breakfast island look perfectly at home here. With space for sofas, 6 seater dining table and office space, this room has a multitude of uses.

Additional Information

Service Charges £4873.36p pa

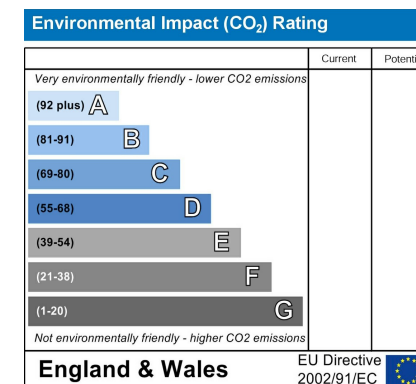
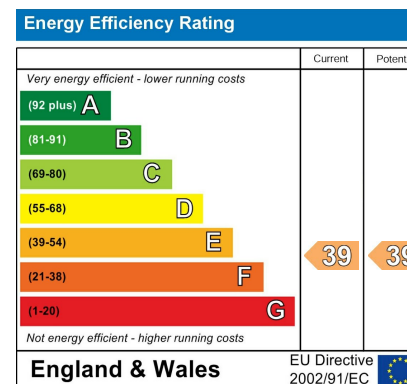
Ground Rent peppercorn

Lease 250 Years from 2015

Building Managed By Zenith

Agents Note

To be able to purchase a property in the United Kingdom all agents have a legal requirement to conduct Identity checks on all customers involved in the transaction to fulfil their obligations under Anti Money Laundering regulations. We outsource this check to a third party and a charge will apply. Ask the branch for further details.

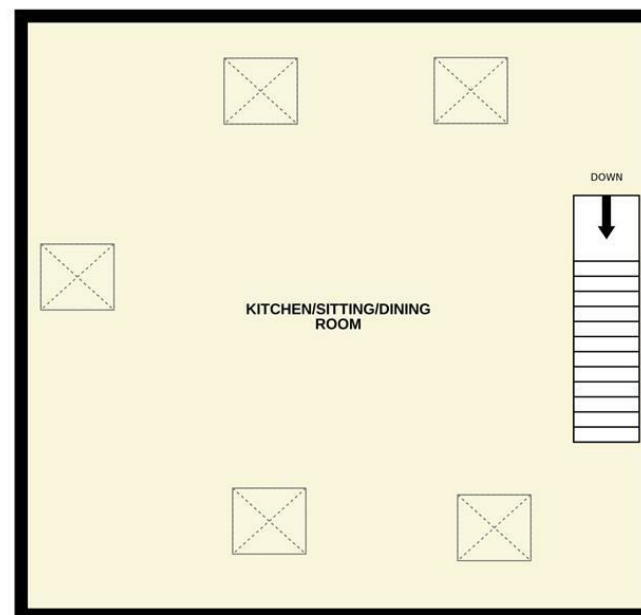




GROUND FLOOR



1ST FLOOR



Measurements are approximate. Not to scale. Illustrative purposes only.
Made with Metropix ©2025



These particulars are believed to be accurate but they are not guaranteed and do not form a contract. Neither Jordan Fishwick nor the vendor or lessor accept any responsibility in respect of these particulars, which are not intended to be statements or representations of fact and any intending purchaser or lessee must satisfy himself by inspection or otherwise as to the correctness of each of the statements contained in these particulars. Any floorplans on this brochure are for illustrative purposes only and are not necessarily to scale.

Offices at: Chorlton, Didsbury, Disley, Hale, Glossop, Macclesfield, Manchester Deansgate, Manchester Whitworth Street, New Mills, Sale, Wilmslow and Withington

245 Deansgate, Manchester, M3 4EN

0161 833 9499 opt 3

manchester@jordanfishwick.co.uk
www.jordanfishwick.co.uk

