



*jordanfishwick*

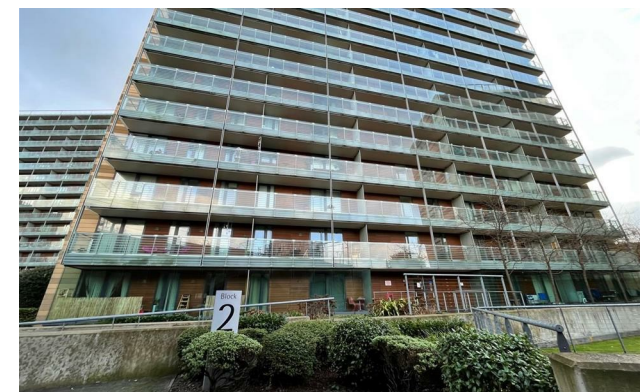
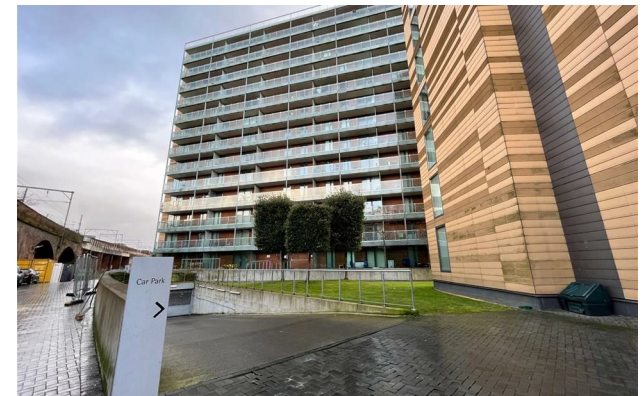
Apt 236 St Georges Island, 2 Kelso Place,  
£1,295 Per Calendar Month





## St Georges Island Castlefield M15 4GQ

£1,295 Per Calendar Month



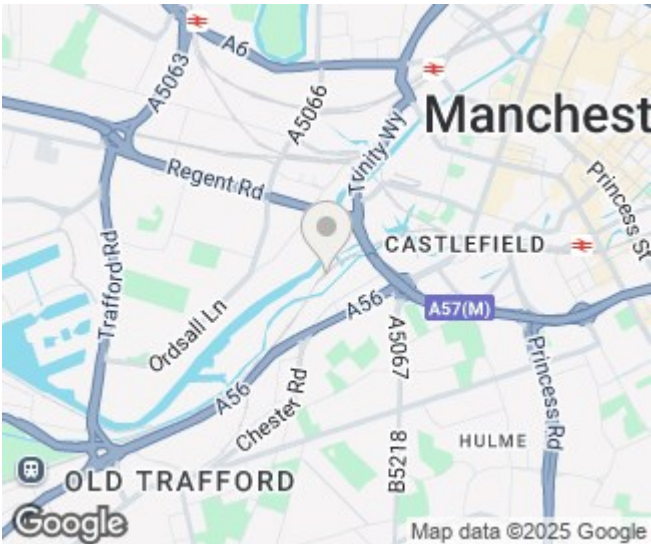
### The Property


Available Now. Jordan Fishwick Estate Agents presents this 3rd floor two bedroom apartment in the popular St Georges Island. This development is a true testament to Dandara showcasing one of their high standard apartments. The apartment briefly comprises of: entrance hall, open plan kitchen/lounge, full length balcony offering stunning views towards the city centre across the canal, two double bedrooms, master with en-suite and a well appointed family bathroom. There is also a storage cupboard in the hallway housing the washing machine and a secure underground parking space is included. Tax Band C. EPC Rating C. £30 pcm for WATER CHARGE. NO PETS/ NO SMOKERS!

\*VIDEO/ PHOTO OFFERS NOT ACCEPTED - PLEASE BOOK AN INPERSON VIEWING\*



- Available Now
- Two Double Bedrooms & Two Bathrooms
- Full Length Balcony w/ Stunning City Views
- Secure Underground Parking
- High Speed Internet Available
- Tax Band C
- £30 pcm Water Charge
- EPC Rating C
- Castlefield Location



Energy Efficiency Rating		
	Current	Potential
Very energy efficient - lower running costs		
(92 plus) <b>A</b>		
(81-91) <b>B</b>		<b>85</b>
(69-80) <b>C</b>	<b>73</b>	
(55-68) <b>D</b>		
(39-54) <b>E</b>		
(21-38) <b>F</b>		
(1-20) <b>G</b>		
Not energy efficient - higher running costs		
<b>England &amp; Wales</b>		EU Directive 2002/91/EC 





Measurements are approximate. Not to scale. Illustrative purposes only  
Made with Metropix ©2020



These particulars are believed to be accurate but they are not guaranteed and do not form a contract. Neither Jordan Fishwick nor the vendor or lessor accept any responsibility in respect of these particulars, which are not intended to be statements or representations of fact and any intending purchaser or lessee must satisfy himself by inspection or otherwise as to the correctness of each of the statements contained in these particulars. Any floorplans on this brochure are for illustrative purposes only and are not necessarily to scale.

Offices at: Offices at Chorlton, Didsbury, Disley, Hale, Glossop, Macclesfield, Manchester Deansgate, Manchester Whitworth Street, New Mills, Sale, Wilmslow and Withington