



jordanfishwick

Apt 618 Masson Place, 1 Hornbeam Way,
£1,350 Per Calendar Month



Masson Place Green Quarter M4 4AQ

£1,350 Per Calendar Month



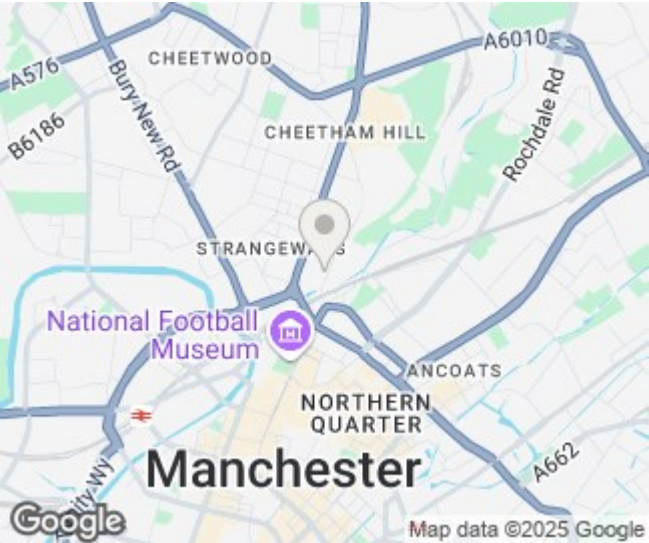
The Property


Available End of July. Jordan Fishwick are pleased to offer this sixth floor, two double bedroom apartment in Masson Place, Green Quarter. This apartment has an open plan living room/kitchen with access to a wrap around balcony with views across the communal gardens towards the city. The apartment briefly comprises of: entrance hall, open plan living room and kitchen with access to the balcony, two double bedrooms, master with en-suite and a well appointed bathroom. There is also a secure allocated parking space included. Tax Band D. EPC Rating C.

REPOSIT (Nil Deposit option) Available on this property.

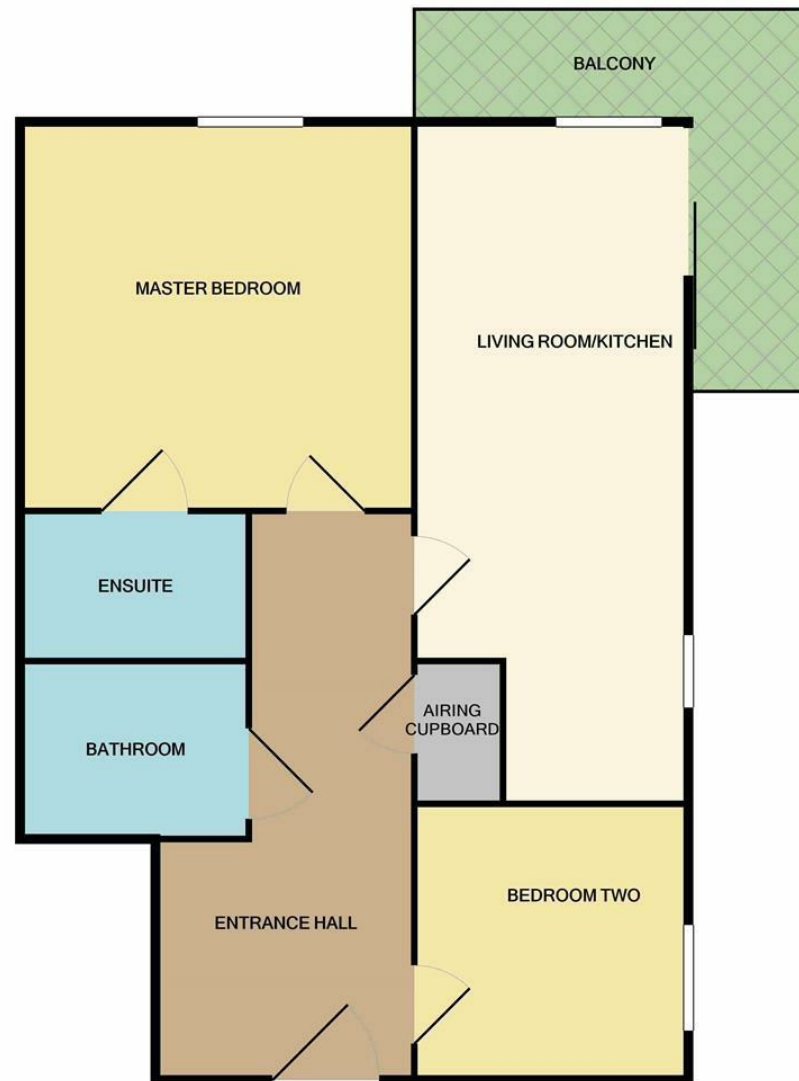
VIDEO/ PHOTO OFFERS NOT ACCEPTED - PLEASE CALL TO BOOK A VIEWING

- Available End of July
- Two Double Bedrooms w/ Balcony
- Green Quarter Location
- Fully Furnished
- Tax Band D
- EPC Rating C
- Close to City Centre
- Secure Parking
- REPOSIT (Nil Deposit) Available



Energy Efficiency Rating		
	Current	Potential
Very energy efficient - lower running costs		
(92 plus) A		
(81-91) B	79	84
(69-80) C		
(55-68) D		
(39-54) E		
(21-38) F		
(1-20) G		
Not energy efficient - higher running costs		
England & Wales	EU Directive 2002/91/EC 	





Measurements are approximate. Not to scale. Illustrative purposes only
Made with Metropix ©2020



These particulars are believed to be accurate but they are not guaranteed and do not form a contract. Neither Jordan Fishwick nor the vendor or lessor accept any responsibility in respect of these particulars, which are not intended to be statements or representations of fact and any intending purchaser or lessee must satisfy himself by inspection or otherwise as to the correctness of each of the statements contained in these particulars. Any floorplans on this brochure are for illustrative purposes only and are not necessarily to scale.

Offices at: Offices at Chorlton, Didsbury, Disley, Hale, Glossop, Macclesfield, Manchester Deansgate, Manchester Whitworth Street, New Mills, Sale, Wilmslow and Withington