



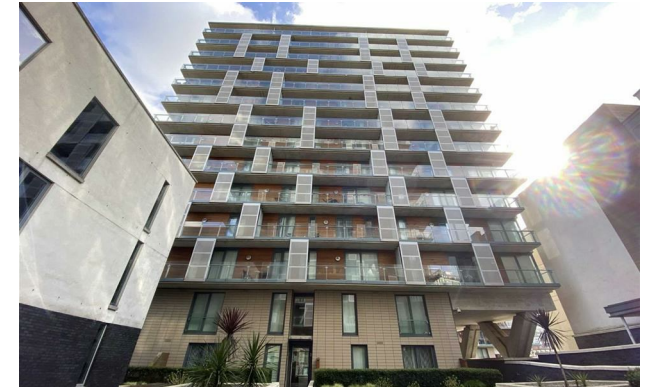
Jordan fishwick

Apt 362 Spectrum, Block 7, Blackfriars
Guide Price £1,025 Per Calendar Month



Spectrum, Block 7 Salford M3 7BY

£1,025 Per Calendar Month



The Property

Available Late May. Jordan Fishwick presents this second floor one bedroom apartment in Dandara's highly popular Spectrum development. This apartment benefits from modern kitchen with integrated dishwasher, fridge and freezer and washer/dryer. The bedroom has integrated wardrobes and there is a full length corner balcony with access from both the bedroom and living area. Furnished throughout. Council Tax Band B. EPC Rating B. No parking. Close to City Centre & Victoria Train Station.

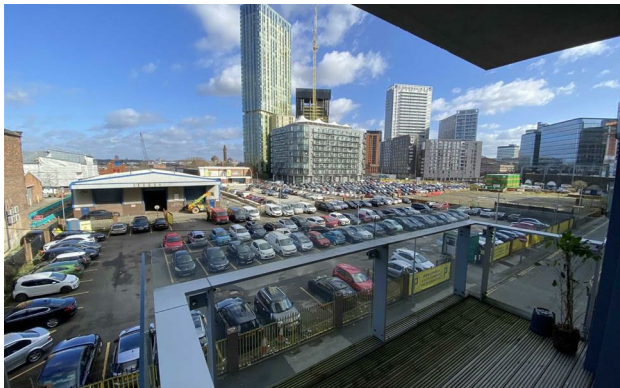
VIDEO/ PHOTO OFFERS NOT ACCEPTED - PLEASE CALL TO BOOK A VIEWING



- Available Late May
- 2nd Floor Apartment
- Furnished
- Balcony
- Tax Band B
- EPC Rating B
- No Parking
- Close to City Centre
- Corner Apartment



Energy Efficiency Rating		
	Current	Potential
Very energy efficient - lower running costs		
(92 plus) A		
(81-91) B	82	86
(69-80) C		
(55-68) D		
(39-54) E		
(21-38) F		
(1-20) G		
Not energy efficient - higher running costs		
England & Wales	EU Directive 2002/91/EC	





These particulars are believed to be accurate but they are not guaranteed and do not form a contract. Neither Jordan Fishwick nor the vendor or lessor accept any responsibility in respect of these particulars, which are not intended to be statements or representations of fact and any intending purchaser or lessee must satisfy himself by inspection or otherwise as to the correctness of each of the statements contained in these particulars. Any floorplans on this brochure are for illustrative purposes only and are not necessarily to scale.

Offices at: Chorlton, Didsbury, Disley, Hale, Glossop, Macclesfield, Manchester Deansgate, Manchester Whitworth Street, New Mills, Sale, Wilmslow and Withington