



jordan fishwick

Apt 113 The Edge, Clowes Street, M3 5NE
Guide Price £1,200 Per Calendar Month



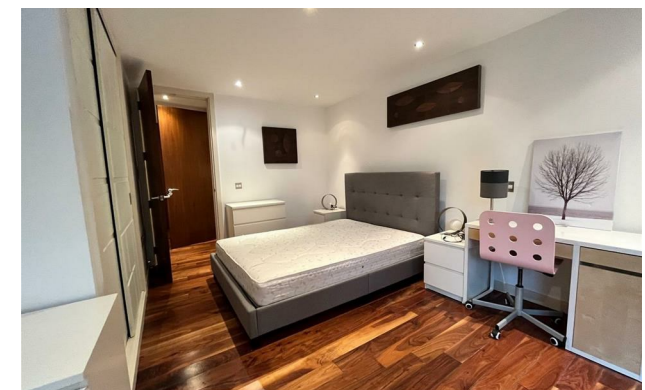
The Edge Salford M3 5NE

£1,200 Per Calendar Month

The Property


Available Mid June. Fantastic and spacious one bedroom apartment on the Second Floor located in the prestigious Edge development. Furnished to a good standard and a high specification throughout, the property comprises of; entrance hallway with tiled mosaic shower room with Villeroy and Boch sanitary ware, large open plan lounge and kitchen area, with integrated appliances such as fridge freezer and slimline dishwasher. Patio doors leading to large decked terrace area overlooking the landscaped communal gardens. Separate bedroom area with large fitted wardrobes and floor to ceiling windows overlooking the gardens. Solid wood flooring throughout. Furnished. 12 Months only. Tax Band C. EPC Rating B. No Parking. No Pets Allowed.

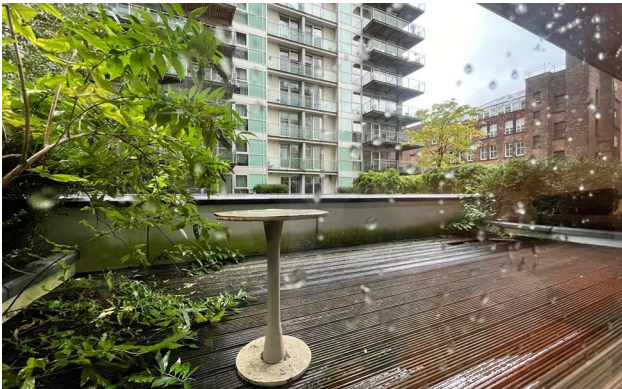
VIDEO/ PHOTO OFFERS NOT ACCEPTED - PLEASE CALL TO BOOK A VIEWING



- Available Mid June
- Second Floor
- One Bedroom - Furnished
- Decked Terrace Area
- Short Walk to City Centre
- 24 hour Concierge
- Council Tax Band C
- EPC Rating B
- No Parking



| Energy Efficiency Rating | | |
|---|---|-----------|
| | Current | Potential |
| Very energy efficient - lower running costs | | |
| (92 plus) A | | |
| (81-91) B | 83 | 83 |
| (69-80) C | | |
| (55-68) D | | |
| (39-54) E | | |
| (21-38) F | | |
| (1-20) G | | |
| Not energy efficient - higher running costs | | |
| England & Wales | EU Directive 2002/91/EC  | |





These particulars are believed to be accurate but they are not guaranteed and do not form a contract. Neither Jordan Fishwick nor the vendor or lessor accept any responsibility in respect of these particulars, which are not intended to be statements or representations of fact and any intending purchaser or lessee must satisfy himself by inspection or otherwise as to the correctness of each of the statements contained in these particulars. Any floorplans on this brochure are for illustrative purposes only and are not necessarily to scale.

Offices at: Chorlton, Didsbury, Disley, Hale, Glossop, Macclesfield, Manchester Deansgate, Manchester Whitworth Street, New Mills, Sale, Wilmslow and Withington