



*jordan fishwick*

1G Spinners Way, Castlefield, M15 4TZ  
Guide Price £1,175 Per Calendar Month





## Spinners Way Manchester M15 4TZ

£1,175 Per Calendar Month



### The Property

Available Mid June. Stunning duplex apartment in St Georges Gardens, Castlefield. Situated on the ground floor of the complex with its own private entrance this apartment offers lovely accommodation just a short walk from the City. The apartment is furnished to an excellent standard and comprises of-

Front door access into open plan living space, high spec & stylish kitchen with integrated appliance and dining area. Downstairs WC and under stairs storage. Stairs leading to 1st floor bedroom area with plenty of space for a dressing area and wardrobe. Upstairs full bathroom.

Residents also have access to the stunning communal roof terrace area which has seating and offers amazing views across the city! Fully Furnished. No Parking. Sorry, No Pets. Tax Band D. EPC Rating B.


\*VIDEO/ PHOTO OFFERS NOT ACCPETED - PLEASE CALL TO BOOK A VIEWING\*

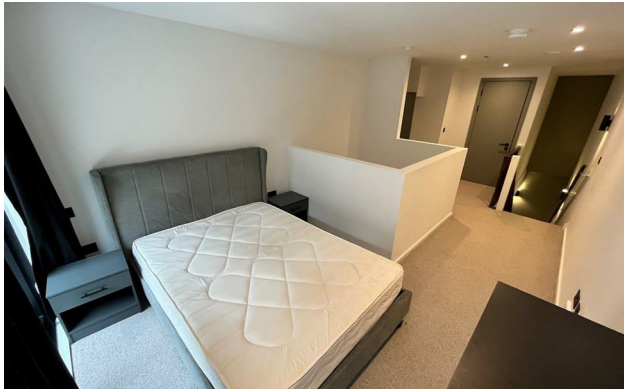




- AVAILABLE MID JUNE
- One Bedroom DUPLEX APARTMENT
- Castlefield Location
- Furnished
- Residents Exclusive Roof Terrace
- EPC Rating B
- Tax Band D
- No Parking
- Close to City Centre



Energy Efficiency Rating		
	Current	Potential
Very energy efficient - lower running costs		
(92 plus) <b>A</b>		
(81-91) <b>B</b>	<b>82</b>	<b>82</b>
(69-80) <b>C</b>		
(55-68) <b>D</b>		
(39-54) <b>E</b>		
(21-38) <b>F</b>		
(1-20) <b>G</b>		
Not energy efficient - higher running costs		
<b>England &amp; Wales</b>	EU Directive 2002/91/EC 	





These particulars are believed to be accurate but they are not guaranteed and do not form a contract. Neither Jordan Fishwick nor the vendor or lessor accept any responsibility in respect of these particulars, which are not intended to be statements or representations of fact and any intending purchaser or lessee must satisfy himself by inspection or otherwise as to the correctness of each of the statements contained in these particulars. Any floorplans on this brochure are for illustrative purposes only and are not necessarily to scale.

Offices at: Chorlton, Didsbury, Disley, Hale, Glossop, Macclesfield, Manchester Deansgate, Manchester Whitworth Street, New Mills, Sale, Wilmslow and Withington