



jordanfishwick

Apt 17 Richmond Court, 50 North George
£825 Per Calendar Month



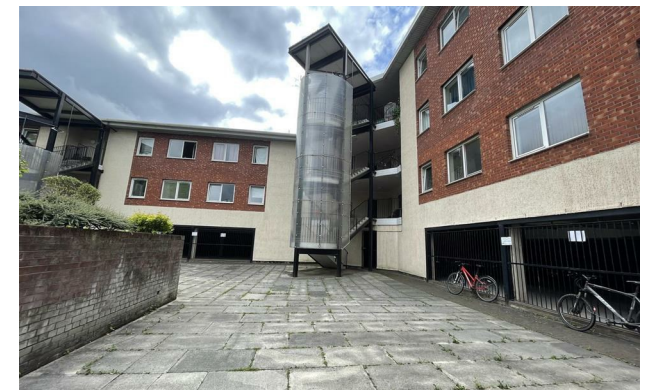
The Property

Available Early May. A very spacious UNFURNISHED one bed apartment on the first floor of this well located development a short stroll from Salford University and all the amenities of Chapel Street. Accommodation comprises of entrance hallway, spacious living area which is open to a stylish kitchen, large double bedroom and a contemporary bathroom. Secure Allocated Parking. Council Tax Band A. EPC Rating D.

VIDEO/ PHOTO OFFERS NOT ACCEPTED - PLEASE BOOK AN IN PERSON VIEWING CALL 0161 833 9499

Richmond Court Salford M3 6DW

£825 Per Calendar Month



- Available NOW
- First Floor - One Bedroom
- Unfurnished
- Just off Chapel Street
- Secure Parking included
- Council Tax band A
- EPC Rating D
- Close to City Centre
- Close to Salford Uni



| Energy Efficiency Rating | | |
|---|----------------------------|-----------|
| | Current | Potential |
| Very energy efficient - lower running costs | | |
| (92 plus) A | | |
| (81-91) B | | |
| (69-80) C | | |
| (55-68) D | 61 | 66 |
| (39-54) E | | |
| (21-38) F | | |
| (1-20) G | | |
| Not energy efficient - higher running costs | | |
| England & Wales | EU Directive 2002/91/EC | |





These particulars are believed to be accurate but they are not guaranteed and do not form a contract. Neither Jordan Fishwick nor the vendor or lessor accept any responsibility in respect of these particulars, which are not intended to be statements or representations of fact and any intending purchaser or lessee must satisfy himself by inspection or otherwise as to the correctness of each of the statements contained in these particulars. Any floorplans on this brochure are for illustrative purposes only and are not necessarily to scale.

Offices at: Offices at Chorlton, Didsbury, Disley, Hale, Glossop, Macclesfield, Manchester Deansgate, Manchester Whitworth Street, New Mills, Sale, Wilmslow and Withington