



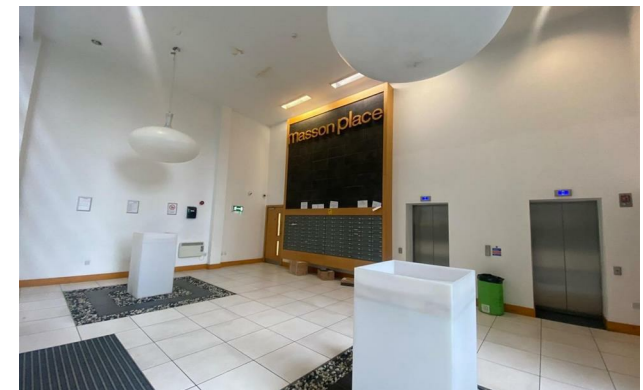
jordanfishwick

Apt 106 Masson Place, 1 Hornbeam Way,
£1,050 Per Calendar Month



Masson Place Green Quarter M4 4AJ

£1,050 Per Calendar Month



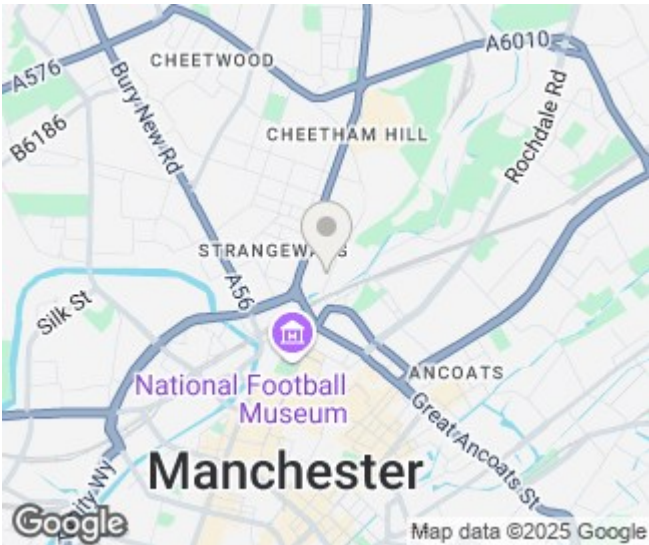
The Property

Available Now. This first floor one bedroom apartment is located in popular Green Quarter, a short walk into the city centre. The property comprises of entrance hall with storage cupboard housing washer/dryer, living room with balcony and modern fully fitted kitchen which comes fully equipped with integrated fridge/freezer, microwave, oven and hob and dishwasher. The bedroom is an exceptionally good size for a couple or single professional. Luxury bathroom with tiled walls and floor, shower over the bath. No Parking. Council Tax Band C. EPC Rating C. No Pets allowed.

REPOSIT (Nil Deposit Option) Available for this property.

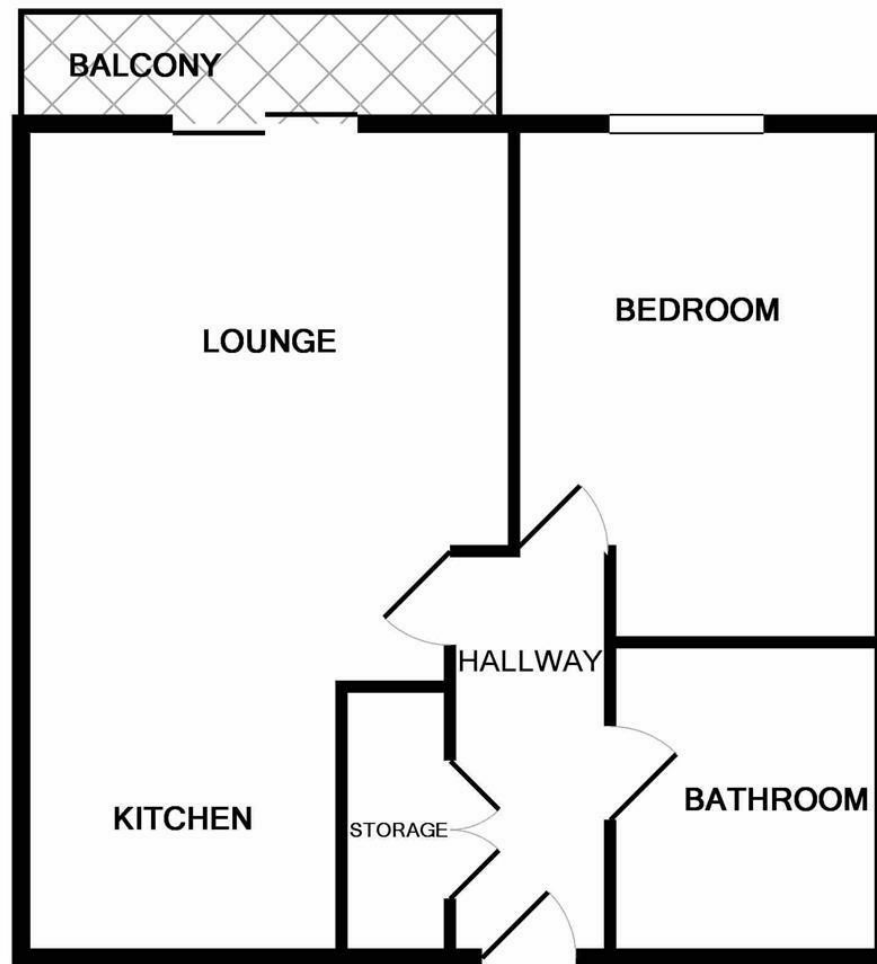
VIDEO/ PHOTO OFFERS NOT ACCEPTED - PLEASE BOOK AN IN PERSON VIEWING

- Available Now
- First Floor Apartment
- Balcony
- Fully Furnished
- Close to Victoria Train Station
- Close to City Centre
- Tax Band C
- EPC Rating C
- No Parking



Energy Efficiency Rating		
	Current	Potential
Very energy efficient - lower running costs		
(92 plus) A		
(81-91) B		
(69-80) C	76	82
(55-68) D		
(39-54) E		
(21-38) F		
(1-20) G		
Not energy efficient - higher running costs		
England & Wales	EU Directive 2002/91/EC	





Measurements are approximate. Not to scale. Illustrative purposes only
Made with Metropix ©2019



These particulars are believed to be accurate but they are not guaranteed and do not form a contract. Neither Jordan Fishwick nor the vendor or lessor accept any responsibility in respect of these particulars, which are not intended to be statements or representations of fact and any intending purchaser or lessee must satisfy himself by inspection or otherwise as to the correctness of each of the statements contained in these particulars. Any floorplans on this brochure are for illustrative purposes only and are not necessarily to scale.

Offices at: Offices at Chorlton, Didsbury, Disley, Hale, Glossop, Macclesfield, Manchester Deansgate, Manchester Whitworth Street, New Mills, Sale, Wilmslow and Withington