



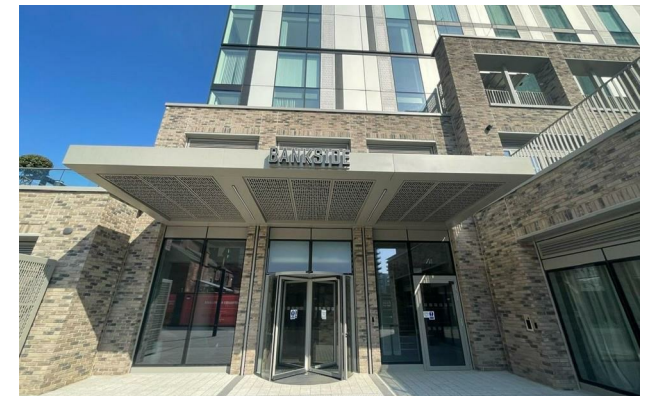
jordanfishwick

Apt 3905 12 Bankside Boulevard, Colliers
£1,300 Per Calendar Month



12 Bankside Boulevard Salford M3 7JB

£1,300 Per Calendar Month



The Property

Available Now. Jordan Fishwick presents this BRAND NEW 39th Floor One Bedroom Apartment.

The property consists of a hallway with utility storage cupboard, living room with floor to ceiling windows, open plan to modern kitchen fitted with a range of wall and base units incorporating integrated appliances, double bedroom and a contemporary three piece bathroom.

The Building comes with state of the art amenities including 24-HR Concierge, Co Working Space, Gym & Studio Space, Games Room & Podcast Studios. With the building sitting on the border of Manchester City Centre and Salford - residents can enjoy a short commute to Manchester Arndale Shopping Centre, Manchester Victoria Train Station and Corn Exchange Tram Station.

EPC Rating B. Tax Band TBC (New Build). No Parking included.

VIDEO/ PHOTO OFFERS NOT ACCEPTED - PLEASE CALL TO BOOK A VIEWING

- Available Now
- Brand New Property
- 39th Floor Apartment
- One bedroom Property - Furnished
- 24-hour Concierge
- Tax Band TBC
- EPC Rating B
- No Parking
- Plenty of Amenities onsite



| Energy Efficiency Rating | | |
|---|----------------------------|-----------|
| | Current | Potential |
| Very energy efficient - lower running costs | | |
| (92 plus) A | | |
| (81-91) B | 86 | 86 |
| (69-80) C | | |
| (55-68) D | | |
| (39-54) E | | |
| (21-38) F | | |
| (1-20) G | | |
| Not energy efficient - higher running costs | | |
| England & Wales | EU Directive 2002/91/EC | |





These particulars are believed to be accurate but they are not guaranteed and do not form a contract. Neither Jordan Fishwick nor the vendor or lessor accept any responsibility in respect of these particulars, which are not intended to be statements or representations of fact and any intending purchaser or lessee must satisfy himself by inspection or otherwise as to the correctness of each of the statements contained in these particulars. Any floorplans on this brochure are for illustrative purposes only and are not necessarily to scale.

Offices at: Offices at Chorlton, Didsbury, Disley, Hale, Glossop, Macclesfield, Manchester Deansgate, Manchester Whitworth Street, New Mills, Sale, Wilmslow and Withington