



Apt 6 55 - 57 Whitworth Street, Manchester, M1 3NT

Fantastic landlord investment opportunity gross rental yield return 9.8% rented at £1050 per month.

Welcome to this charming studio style one bedroom apartment located at 55-57 Whitworth Street in the vibrant city of Manchester. This ground floor apartment offers a unique blend of comfort and convenience, making it an ideal choice for individuals or couples seeking a modern urban lifestyle.

Upon entering, you will find a well-designed living space that seamlessly integrates with the bedroom area, providing a warm and inviting atmosphere. The apartment features a thoughtfully laid out bathroom, ensuring all your needs are met in this compact yet functional home.

Asking Price £126,000

Viewing arrangements

Viewing strictly by appointment through the agent

245 Deansgate, Manchester, M3 4EN 0161 833 9499 opt 3

Location

One of the standout features of this property is the access to a range of excellent amenities. Residents can enjoy the luxury of a gym, a swimming pool, and a sauna, perfect for maintaining an active lifestyle and unwinding after a long day. Additionally, the communal gardens offer a serene escape from the hustle and bustle of city life, providing a lovely space to relax outdoors.

Living Room

13'11" x 10'5"

Ceiling light. Laminate flooring. Storage heater.

Kitchen

9'3" x 7'8"

Range of wall and base units with worktops over. Sink with mixer tap. Cooker with hob and extractor over. Integrated fridge/freezer. Freestanding washing machine. Cupboard housing water tank.

Bedroom Area

11'8" x 7'2"

Ceiling light. Carpet. Wall mounted heater. Fitted wardrobes.

Bathroom

Low level W/C. Sink with mixer tap. Shower cubicle with electric shower. Part tiled. Vinyl flooring. Wall mounted heater.

Additional Information

Service charges - £3900 per annum

Ground rent - N/A

Lease - 999 years from 1991

Managing agents - Scanlans

Gross annual yield 9.8%

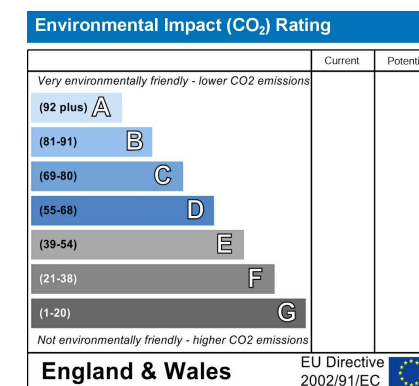
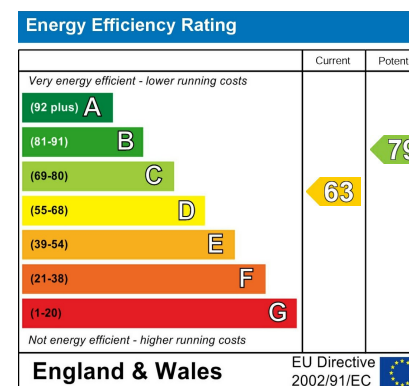
The Building

For those with a vehicle, the property includes an underground parking space, ensuring your car is secure and easily accessible. The absence of an onward chain simplifies the buying process, allowing for a smoother transition into your new home.

This apartment is not just a place to live; it is a lifestyle choice, situated in a prime location that offers the best of Manchester at your doorstep. Whether you are looking to invest or find your next home, this property presents an excellent opportunity. Do not miss the chance to make this delightful studio your own. Rented at £1000 pcm until August 2025.

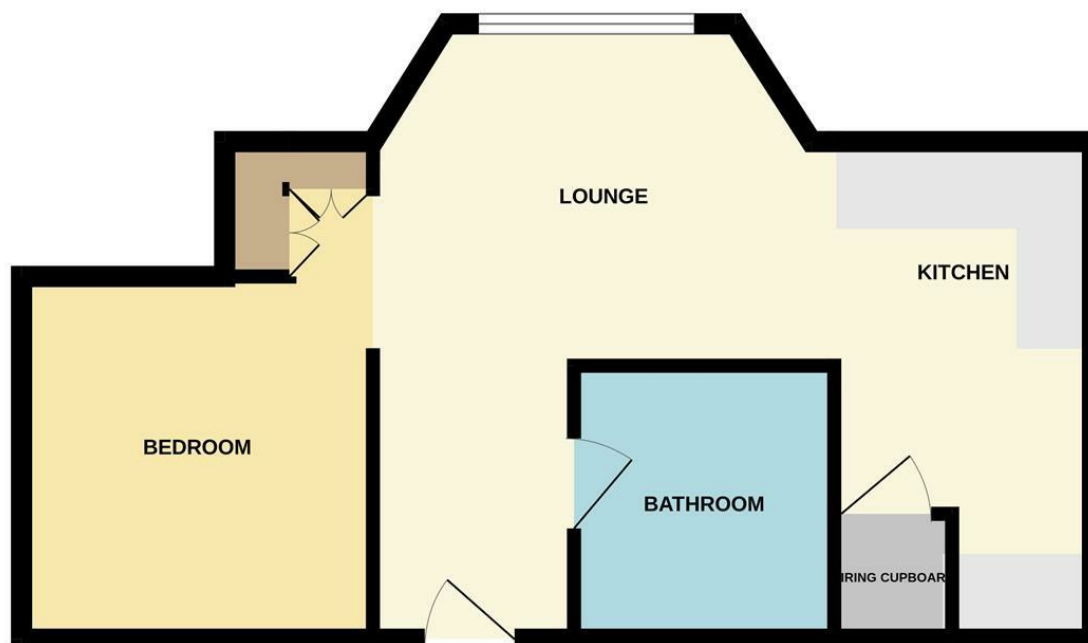
Agents Notes

To be able to purchase a property in the United Kingdom all agents have a legal requirement to conduct Identity checks on all customers involved in the transaction to fulfil their obligations under Anti Money Laundering regulations. We outsource this check to a third party and a charge will apply. Ask the branch for further details.





GROUND FLOOR



Measurements are approximate. Not to scale. Illustrative purposes only.
Made with Metropix ©2025



These particulars are believed to be accurate but they are not guaranteed and do not form a contract. Neither Jordan Fishwick nor the vendor or lessor accept any responsibility in respect of these particulars, which are not intended to be statements or representations of fact and any intending purchaser or lessee must satisfy himself by inspection or otherwise as to the correctness of each of the statements contained in these particulars. Any floorplans on this brochure are for illustrative purposes only and are not necessarily to scale.

Offices at: Chorlton, Didsbury, Disley, Hale, Glossop, Macclesfield, Manchester Deansgate, Manchester Whitworth Street, New Mills, Sale, Wilmslow and Withington

245 Deansgate, Manchester, M3 4EN

0161 833 9499 opt 3

manchester@jordanfishwick.co.uk
www.jordanfishwick.co.uk

