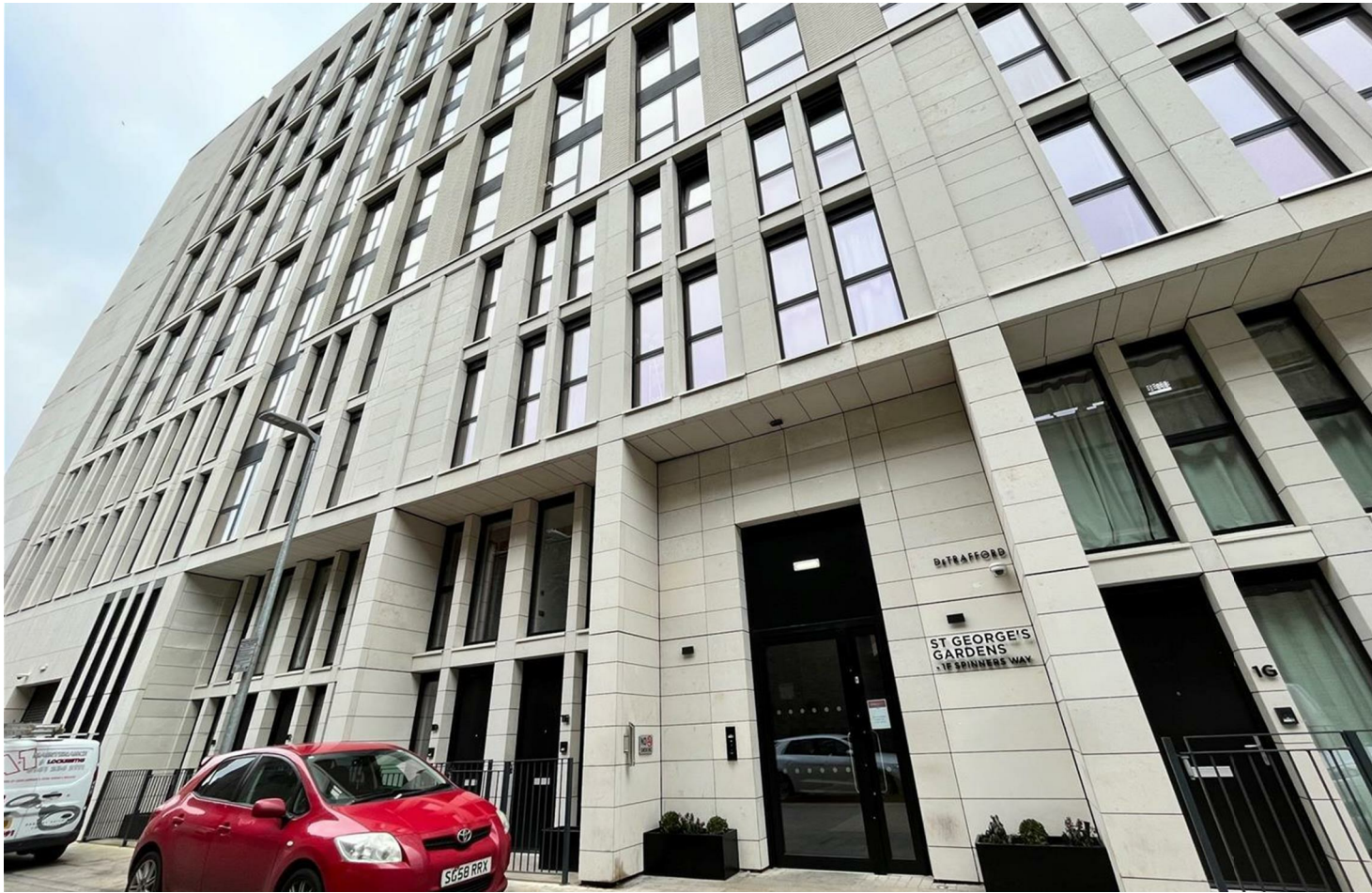




jordanfishwick

1C Spinners Way, St Georges Garden,
£1,100 Per Calendar Month



Spinners Way Manchester M15 4TZ

£1,100 Per Calendar Month

The Property

Available Now. Jordan Fishwick presents this stunning duplex apartment in St Georges Gardens, Castlefield. Situated on the ground floor of the complex with its own private entrance this apartment offers lovely accommodation just a short walk from the City. The apartment is furnished to an excellent standard and comprises of-

Entrance into open plan living space, high spec & stylish kitchen with integrated appliance and dining area. Downstairs WC and under stairs storage. Stairs leading to 1st floor bedroom area with plenty of space for a dressing area and wardrobe. Upstairs full bathroom.

Residents also have access to the stunning communal roof terrace area which has seating and offers amazing views across the city! Fully Furnished. No Parking. Sorry, no Pets. Tax Band D. EPC Rating B.

REPOSIT (Nil Deposit Option) Available on this property.

VIDEO/ PHOTO OFFERS NOT ACCEPTED - PLEASE CALL TO BOOK A VIEWING



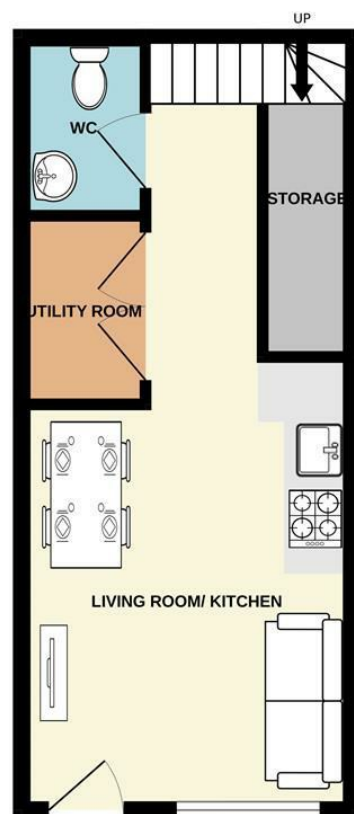
- Available Now
- One Bedroom
- Duplex Apartment
- Downstairs WC
- Castlefield Location
- Roof Garden Access
- Tax Band D
- EPC Rating B
- NO Parking / NO Pets



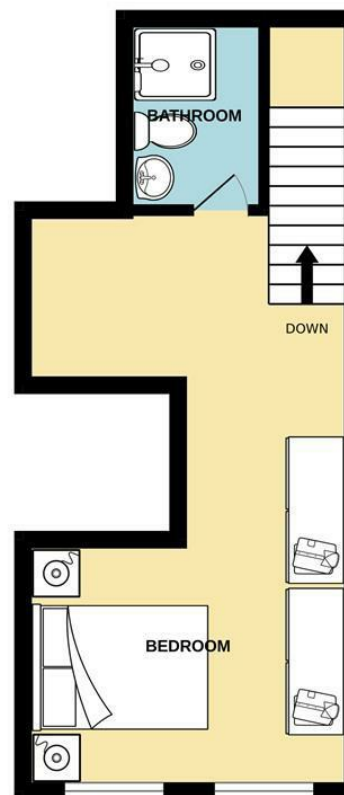
Energy Efficiency Rating		
	Current	Potential
Very energy efficient - lower running costs		
(92 plus) A		
(81-91) B	81	81
(69-80) C		
(55-68) D		
(39-54) E		
(21-38) F		
(1-20) G		
Not energy efficient - higher running costs		
England & Wales		EU Directive 2002/91/EC



GROUND FLOOR



1ST FLOOR



Measurements are approximate. Not to scale. Illustrative purposes only
Made with Metropix ©2024



These particulars are believed to be accurate but they are not guaranteed and do not form a contract. Neither Jordan Fishwick nor the vendor or lessor accept any responsibility in respect of these particulars, which are not intended to be statements or representations of fact and any intending purchaser or lessee must satisfy himself by inspection or otherwise as to the correctness of each of the statements contained in these particulars. Any floorplans on this brochure are for illustrative purposes only and are not necessarily to scale.

Offices at: Offices at Chorlton, Didsbury, Disley, Hale, Glossop, Macclesfield, Manchester Deansgate, Manchester Whitworth Street, New Mills, Sale, Wilmslow and Withington