



Jordan fishwick

Apt 275 St Georges Island, 2 Kelso Place,
£1,095 Per Calendar Month



The Property

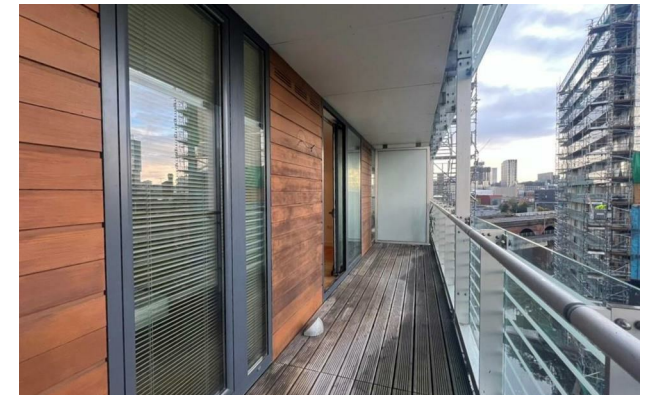
PLEASE NOTE - BUILDING MAINTENANCE IS OCCURRING ON THE PROPERTY TILL EARLY 2025. DISRUPTIONS MAY OCCUR DURING YOUR TENANCY

Available Mid November. Spacious 7th Floor one bedroom apartment in Dandara's St Georges Island. Situated a short walk from Deansgate and located in Castlefield, this furnished apartment is in excellent condition throughout and comprises of: hallway leading to open plan living area with gloss kitchen and integrated appliances, good sized double bedroom and large bathroom with mixer shower attachment. The property also features a full sized decked balcony and allocated underground parking. 24 hour concierge on site. 12 Month Contract. Water consumption extra £25 per month. Tax Band B. EPC Rating C. REPOSIT (Nil Deposit option) available on this property.

VIDEO/PHOTO OFFERS NOT ACCEPTED - PLEASE CALL TO BOOK A VIEWING


St Georges Island Castlefield M15 4GQ

£1,095 Per Calendar Month



- Available Mid November
- Spacious 1 Bedroom Apt
- Furnished
- Large Balcony
- Tax Band B
- EPC Rating C
- Secure Parking
- £25 PCM Water Charge
- Castlefield Location



Energy Efficiency Rating		
	Current	Potential
Very energy efficient - lower running costs		
(92 plus) A		
(81-91) B		
(69-80) C	79	85
(55-68) D		
(39-54) E		
(21-38) F		
(1-20) G		
Not energy efficient - higher running costs		
England & Wales	EU Directive 2002/91/EC 	

Available with
Reposit
 No deposit needed





These particulars are believed to be accurate but they are not guaranteed and do not form a contract. Neither Jordan Fishwick nor the vendor or lessor accept any responsibility in respect of these particulars, which are not intended to be statements or representations of fact and any intending purchaser or lessee must satisfy himself by inspection or otherwise as to the correctness of each of the statements contained in these particulars. Any floorplans on this brochure are for illustrative purposes only and are not necessarily to scale.

Offices at: Offices at Chorlton, Didsbury, Disley, Hale, Glossop, Macclesfield, Manchester Deansgate, Manchester Whitworth Street, New Mills, Sale, Wilmslow and Withington