



BROADFIELD ROAD

SAFE & SOUND

221





# 221 Broadfield Road, Manchester, M14 7JH

Welcome to Broadfield Road, Manchester - a charming three-bedroom end terrace house that is sure to capture your interest! This delightful property boasts two separate reception rooms, three double bedrooms on the first floor, giving ample space for a growing family or for those who enjoy having a guest room or home office.

Situated close to central Manchester, this home offers the best of both worlds - a peaceful retreat from the hustle and bustle of the city, yet conveniently located near all the amenities and attractions Manchester has to offer. The good bus routes nearby make commuting a breeze, providing easy access to the city centre and beyond.

Whether you're looking for a place to call home or considering an investment opportunity with great rental potential, this end terrace house on Broadfield Road is a fantastic choice. Don't miss out on the chance to make this property your own and enjoy all that Manchester has to offer! No onward chain. FREEHOLD.

## Offers Around £230,000

### Viewing arrangements

Viewing strictly by appointment through the agent

245 Deansgate, Manchester, M3 4EN 0161 833 9499 opt 3

### Entrance Hall

Fitted carpet. Radiator. Ceiling light.

### Living Room

12'11" x 12'9"

Fitted carpet. Radiator. Ceiling light. TV aerial.

### Dining Room

12'11" x 13'0"

Fitted carpet. Radiator. Ceiling light. Gas fireplace.  
Understairs storage cupboard.

### Kitchen

9'6" x 8'11"

Range of wall and base units with worktops over. Sink with

mixer tap. Free standing fridge/freezer and washing machine. Cooker with hob and extractor over. Vinyl flooring. Door to yard. Combi boiler.

### Bedroom One

16'2" x 9'10"

Fitted carpet. Radiator. Ceiling light.

### Bedroom Two

10'11" x 8'4"

Fitted carpet. Radiator. Ceiling light. Fitted wardrobe.

### Bedroom Three

9'9" x 9'2"

Fitted carpet. Radiator. Ceiling light. Fitted wardrobe.

## Bathroom

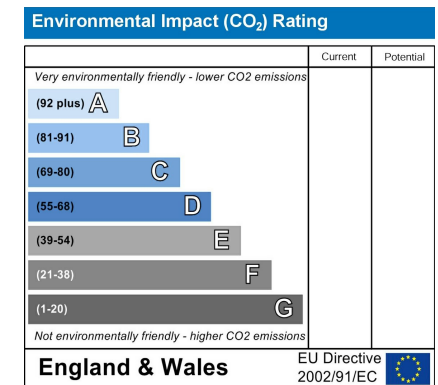
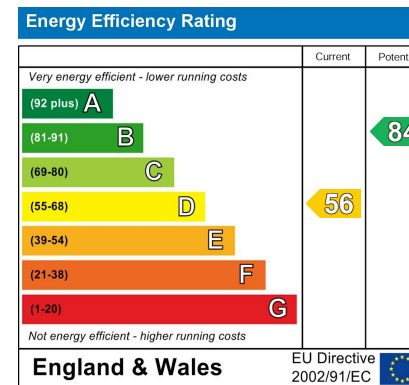
Low level W/C. Sink with mixer tap. Bath with mixer shower.  
Window. Ceiling light. Radiator.

## Externally

Front and rear yard. On street parking.

## Additional Information

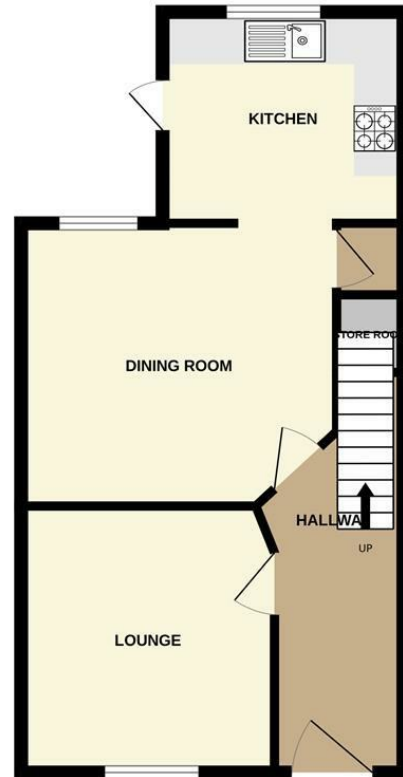
Freehold. No onward chain.







GROUND FLOOR



1ST FLOOR



Measurements are approximate. Not to scale. Illustrative purposes only.  
Made with Metropix ©2024



These particulars are believed to be accurate but they are not guaranteed and do not form a contract. Neither Jordan Fishwick nor the vendor or lessor accept any responsibility in respect of these particulars, which are not intended to be statements or representations of fact and any intending purchaser or lessee must satisfy himself by inspection or otherwise as to the correctness of each of the statements contained in these particulars. Any floorplans on this brochure are for illustrative purposes only and are not necessarily to scale.

Offices at: Chorlton, Didsbury, Disley, Hale, Glossop, Macclesfield, Manchester Deansgate, Manchester Whitworth Street, New Mills, Sale, Wilmslow and Withington

245 Deansgate, Manchester, M3 4EN

0161 833 9499 opt 3

[manchester@jordanfishwick.co.uk](mailto:manchester@jordanfishwick.co.uk)

[www.jordanfishwick.co.uk](http://www.jordanfishwick.co.uk)



