



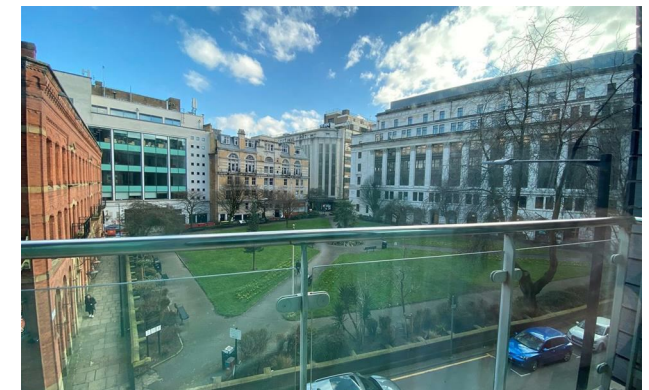
*Jordan fishwick*

Apt 39 Century Buildings, St Marys  
£1,650 Per Calendar Month



## Century Buildings Manchester M3 2DD

£1,650 Per Calendar Month




### The Property

Available Now. Jordan Fishwick are pleased to offer for rent this beautiful two bedroom apartment in the stunning Century Buildings, located on St Marys Parsonage. Just a stones throw away from Deansgate and Spinningfields, the development boasts an on site concierge and valet parking. There is a bright lounge area which overlooks Parsonage Gardens. There is a modern kitchen with built in appliances, and two large double bedrooms. Both bedrooms come with fitted wardrobes. There is also a well appointed bathroom with shower over & a separate W/C. The property is Fully Furnished with Valet Parking INCLUDED! Tax Band F. EPC Rating C. No Pets Allowed.

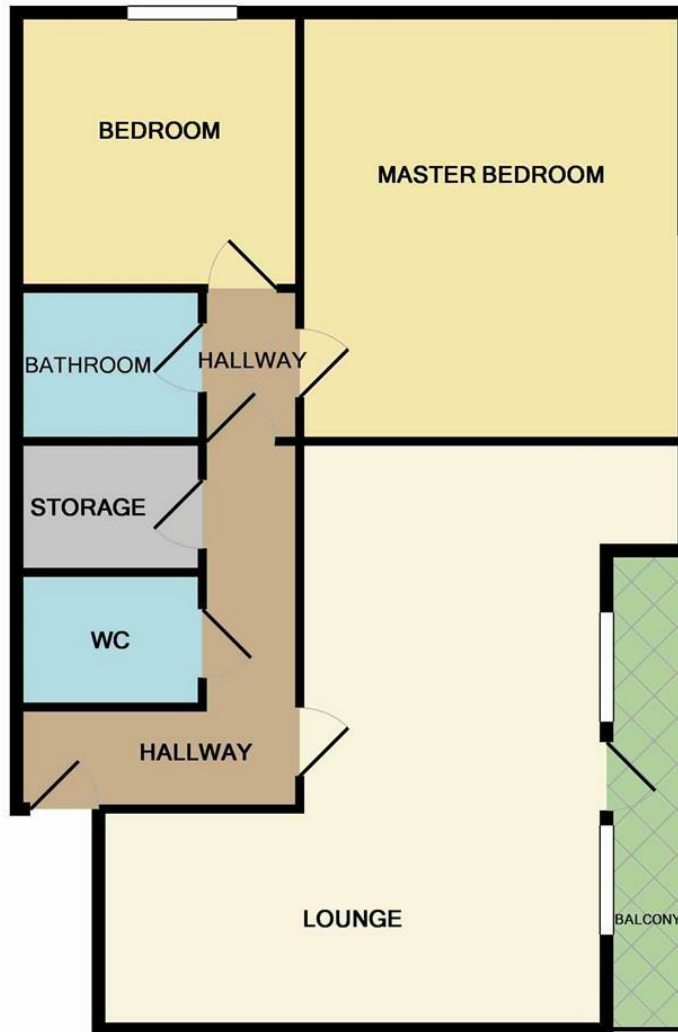
\*VIDEO/ PHOTO OFFERS NOT ACCEPTED - PLEASE CALL TO BOOK A VIEWING\*

- Available Now
- 2 Double Bedrooms
- Central location
- Onsite Concierge
- Tax Band F
- EPC Rating C
- Valet Parking included
- Grade Listed Building



Energy Efficiency Rating		
	Current	Potential
Very energy efficient - lower running costs		
(92 plus) <b>A</b>		
(81-91) <b>B</b>		
(69-80) <b>C</b>	<b>72</b>	<b>72</b>
(55-68) <b>D</b>		
(39-54) <b>E</b>		
(21-38) <b>F</b>		
(1-20) <b>G</b>		
Not energy efficient - higher running costs		
<b>England &amp; Wales</b>	EU Directive 2002/91/EC 	





Measurements are approximate. Not to scale. Illustrative purposes only  
Made with Metropix ©2016



These particulars are believed to be accurate but they are not guaranteed and do not form a contract. Neither Jordan Fishwick nor the vendor or lessor accept any responsibility in respect of these particulars, which are not intended to be statements or representations of fact and any intending purchaser or lessee must satisfy himself by inspection or otherwise as to the correctness of each of the statements contained in these particulars. Any floorplans on this brochure are for illustrative purposes only and are not necessarily to scale.

Offices at: Offices at Chorlton, Didsbury, Disley, Hale, Glossop, Macclesfield, Manchester Deansgate, Manchester Whitworth Street, New Mills, Sale, Wilmslow and Withington