



STANBROKE STATION
DORSETT CASTLEFIELD
MUSEUM

ELIZABETH TOWER
VICTORIA RESIDENCE
APRIL 2018



Flat 3804 Elizabeth Tower, 141 Chester Road, Manchester, M15 4ZL

Welcome to this stunning apartment located on the 38th floor of the prestigious Elizabeth Tower in Manchester. This modern build offers a perfect blend of luxury and convenience, ideal for those seeking a sophisticated urban lifestyle. As you step into this property, you are greeted by a stylish hallway with utility room housing water tank and washing machine. The apartment boasts one spacious bedroom, providing a comfortable and private retreat. The bathroom is sleek and modern, offering a tranquil space to unwind after a long day. One of the highlights of this property is the access to fantastic amenities including a swimming pool and gym on the 44th floor, perfect for those who enjoy an active lifestyle without having to leave the building. Renaker has truly created a space that caters to both relaxation and fitness needs. The crowning glory of this apartment is the breath-taking views it offers. Imagine waking up to panoramic scenes of the city skyline or enjoying a sunset over Manchester - truly a sight to behold. Don't miss out on the opportunity to make this apartment your own and experience city living at its finest. Contact us today to arrange a viewing and take the first step towards owning a piece of luxury in the heart of Manchester.

Price £315,000

Viewing arrangements

Viewing strictly by appointment through the agent
245 Deansgate, Manchester, M3 4EN 0161 833 9499 opt 3

Entrance Hall

Engineered wood flooring. Utility cupboard housing water tank and washing machine.

Living Room/Kitchen

25'1" x 12'0"

Range of wall and base units with complimentary worktops over. Sink with mixer tap. Integrated fridge/freezer, dishwasher, cooker, microwave and dishwasher. Spotlights. TV and telephone point. Wall mounted heater, Bluetooth controlled.

Bedroom

18'5" x 8'9"

Spotlights. Fitted carpet. TV point. Wall mounted heater, Bluetooth controlled.

Bathroom

Fully tiled bathroom suite. Bath with mixer shower over. Floating sink with mixer tap. Low level W/C. Heated towel rail. Shaver point. Vanity storage.

Externally

Lifts to all floors. Terrace area. Gym, fitness studios and pool. 24 hour concierge.

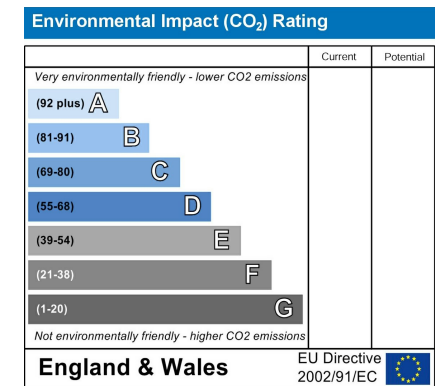
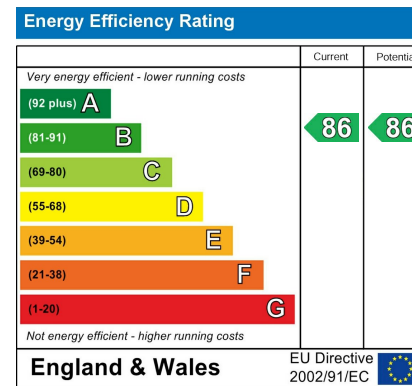
Additional Information

Ground rent - £386 per annum (increases with RPI every 5 years)

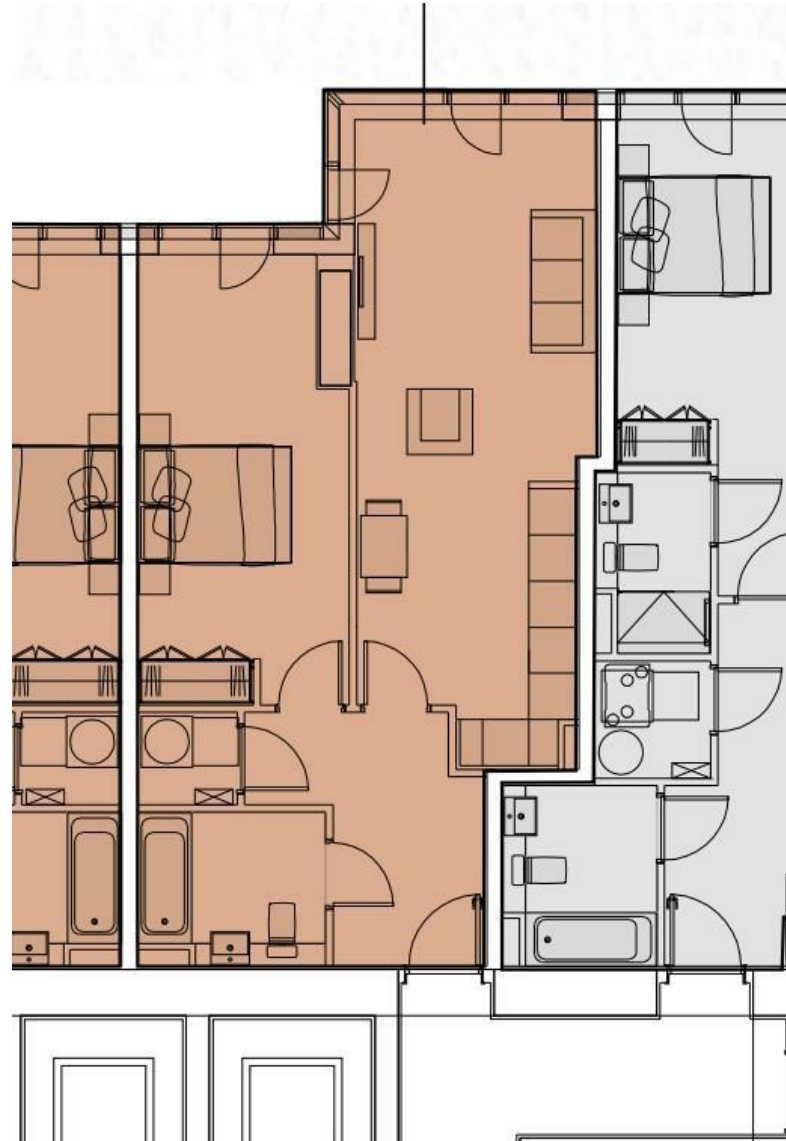
Lease - 999 years from 2019

Service charges - £2148 per annum (including buildings insurance)

Managing agents - Zenith







These particulars are believed to be accurate but they are not guaranteed and do not form a contract. Neither Jordan Fishwick nor the vendor or lessor accept any responsibility in respect of these particulars, which are not intended to be statements or representations of fact and any intending purchaser or lessee must satisfy himself by inspection or otherwise as to the correctness of each of the statements contained in these particulars. Any floorplans on this brochure are for illustrative purposes only and are not necessarily to scale.

Offices at: Chorlton, Didsbury, Disley, Hale, Glossop, Macclesfield, Manchester Deansgate, Manchester Whitworth Street, New Mills, Sale, Wilmslow and Withington

245 Deansgate, Manchester, M3 4EN

0161 833 9499 opt 3

manchester@jordanfishwick.co.uk

www.jordanfishwick.co.uk

