



*Jordan fishwick*

Apt 21 14-16 Whitworth Street, M1 3BS  
£1,300 Per Calendar Month



## 14-16 Whitworth Street Manchester M1 3BS

£1,300 Per Calendar Month



### The Property

Available Early September. Jordan Fishwick presents this sixth floor one bedroom apartment, close to Piccadilly Train Station. This one bedroom apartment briefly comprises of an open plan living room with access to the balcony. A luxury fitted kitchen with integrated appliances and breakfast bar. A double bedroom with a king-size bed & fitted wardrobes. A contemporary fully tiled bathroom suite. No Parking & No pets. Tax Band D. EPC Rating C.

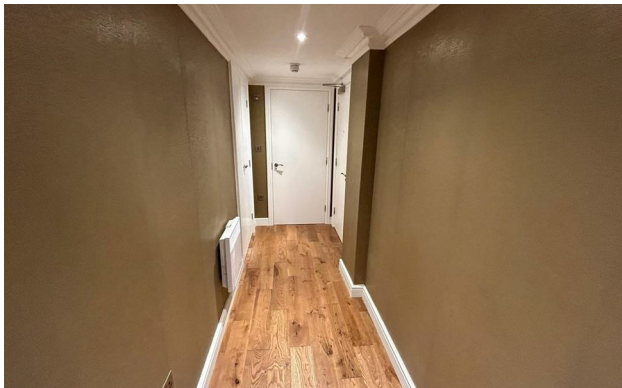
**\*VIDEO/ PHOTO OFFERS NOT ACCEPTED - PLEASE CALL TO BOOK AN IN PERSON VIEWING\***



- Available Early September
- 6th Floor Apartment
- Balcony
- Close to transport links
- Close to Universities
- EPC Rating C
- Tax Band D
- Great Location
- No Parking



Energy Efficiency Rating		
	Current	Potential
Very energy efficient - lower running costs		
(92 plus) <b>A</b>		
(81-91) <b>B</b>		<b>82</b>
(69-80) <b>C</b>	<b>69</b>	
(55-68) <b>D</b>		
(39-54) <b>E</b>		
(21-38) <b>F</b>		
(1-20) <b>G</b>		
Not energy efficient - higher running costs		
<b>England &amp; Wales</b>	EU Directive 2002/91/EC	





These particulars are believed to be accurate but they are not guaranteed and do not form a contract. Neither Jordan Fishwick nor the vendor or lessor accept any responsibility in respect of these particulars, which are not intended to be statements or representations of fact and any intending purchaser or lessee must satisfy himself by inspection or otherwise as to the correctness of each of the statements contained in these particulars. Any floorplans on this brochure are for illustrative purposes only and are not necessarily to scale.

Offices at: Offices at Chorlton, Didsbury, Disley, Hale, Glossop, Macclesfield, Manchester Deansgate, Manchester Whitworth Street, New Mills, Sale, Wilmslow and Withington