



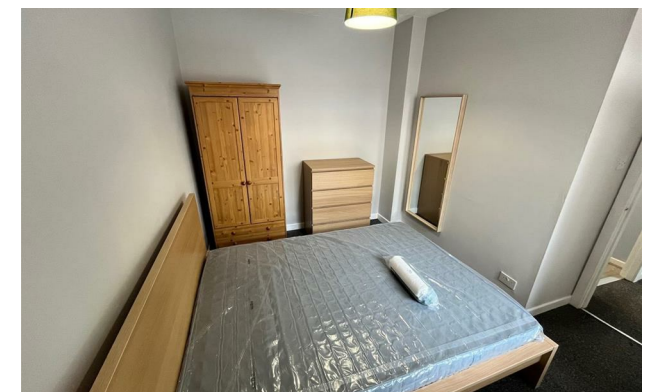
jordan fishwick

33 Wellmead Close, Cheetwood, M8 8BS
£850 Per Calendar Month



Wellmead Close Manchester M8 8BS

£850 Per Calendar Month



The Property


Available Now. Jordan Fishiwick presents this lovely Ground Floor apartment on the popular development in Cheetwood. Fantastic location a short stroll from the city centre and local amenities! This fantastic property includes a spacious living room with storage cupboard, separate kitchen, well-proportioned bedroom including a wardrobe and a good sized bathroom with shower. Fully Furnished. Council Tax band A. EPC Rating C. On-site permit parking.

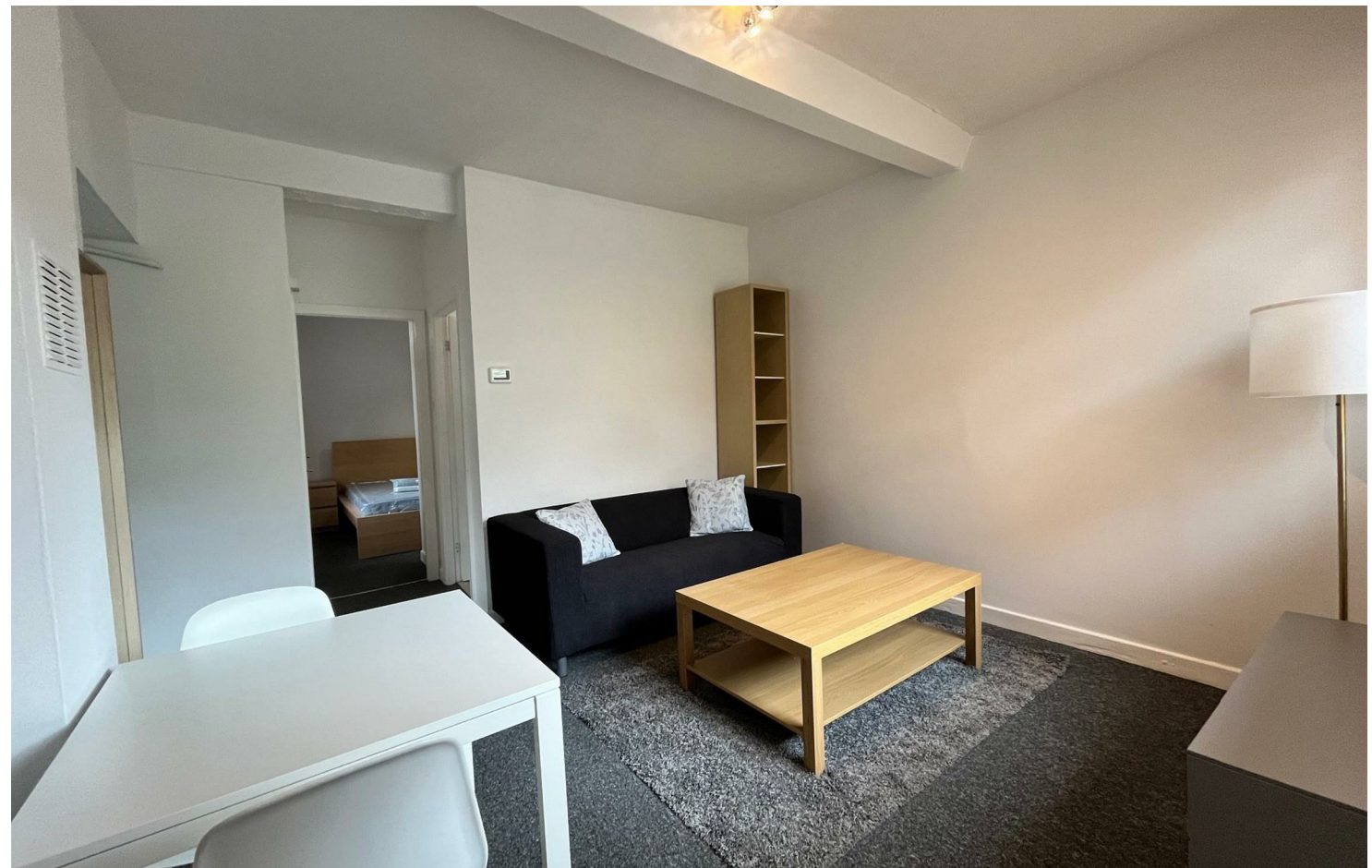
Great for single PROFESSIONALS or Young Professional Couples.

VIDEO/ PHOTO OFFERS NOT ACCEPTED - PLEASE CALL TO BOOK A VIEWING

- Available Now
- One Bed Apartment
- Fully Furnished
- Close to City Centre
- EPC Rating C
- Tax Band A
- Recently Refurbished
- Permit Parking on site



Energy Efficiency Rating		
	Current	Potential
Very energy efficient - lower running costs		
(92 plus) A		
(81-91) B		
(69-80) C	69	74
(55-68) D		
(39-54) E		
(21-38) F		
(1-20) G		
Not energy efficient - higher running costs		
England & Wales	EU Directive 2002/91/EC 	





These particulars are believed to be accurate but they are not guaranteed and do not form a contract. Neither Jordan Fishwick nor the vendor or lessor accept any responsibility in respect of these particulars, which are not intended to be statements or representations of fact and any intending purchaser or lessee must satisfy himself by inspection or otherwise as to the correctness of each of the statements contained in these particulars. Any floorplans on this brochure are for illustrative purposes only and are not necessarily to scale.

Offices at: Offices at Chorlton, Didsbury, Disley, Hale, Glossop, Macclesfield, Manchester Deansgate, Manchester Whitworth Street, New Mills, Sale, Wilmslow and Withington