



jordan fishwick

Apt 61 Milliners Wharf, 2 Munday Street,
£1,400 Per Calendar Month



The Property

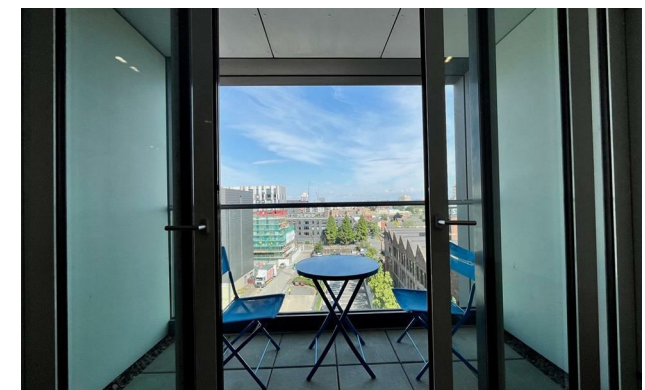
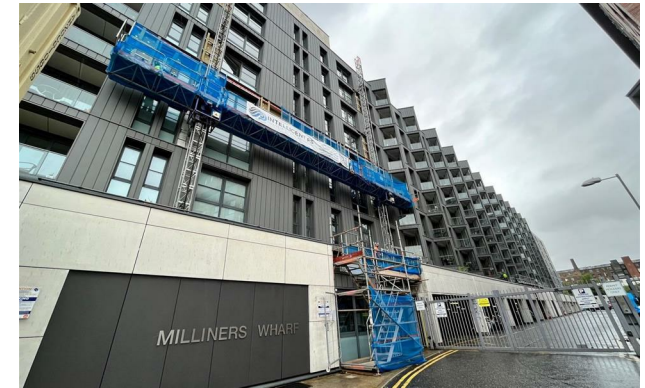
Available Late August. Jordan Fishwick are delighted to offer a large two bedroom apartment in Milliners Wharf, Ancoats. Situated in a sought after building on the sixth floor, Milliners Wharf is just a short walk to the City Centre and the Northern Quarter and benefits from excellent transport links with a Metrolink stop a 2 min walk away. The apartment comprises a large open plan living space with solid wood flooring, furnished throughout and a good sized paved balcony. There is a stylish kitchen with gloss units, integrated fridge, freezer, as well as ceramic hob. Two good sized bedrooms with ample storage, the master benefiting from an en-suite shower room and a high quality main bathroom. This property also benefits from secure allocated parking. Tax Band C. EPC Rating C.

Great for a Professional couple or Professional who requires an office room.

VIDEO/PHOTO OFFERS NOT ACCEPTED - PLEASE CALL TO BOOK A VIEWING

Milliners Wharf Manchester M4 7BB

£1,400 Per Calendar Month



- Available Late August
- 6th Floor Apartment
- 2 Double bedrooms
- Bathroom & Ensuite
- Onsite Concierge
- EPC Rating C
- Tax Band C
- Close Transport links
- Parking included



Energy Efficiency Rating		
	Current	Potential
Very energy efficient - lower running costs		
(92 plus) A		
(81-91) B	79	82
(69-80) C		
(55-68) D		
(39-54) E		
(21-38) F		
(1-20) G		
Not energy efficient - higher running costs		
England & Wales	EU Directive 2002/91/EC	





These particulars are believed to be accurate but they are not guaranteed and do not form a contract. Neither Jordan Fishwick nor the vendor or lessor accept any responsibility in respect of these particulars, which are not intended to be statements or representations of fact and any intending purchaser or lessee must satisfy himself by inspection or otherwise as to the correctness of each of the statements contained in these particulars. Any floorplans on this brochure are for illustrative purposes only and are not necessarily to scale.

Offices at: Offices at Chorlton, Didsbury, Disley, Hale, Glossop, Macclesfield, Manchester Deansgate, Manchester Whitworth Street, New Mills, Sale, Wilmslow and Withington