



*Jordan fishwick*

Apt 39 Chepstow House, 16-20 Chepstow  
£1,450 Per Calendar Month



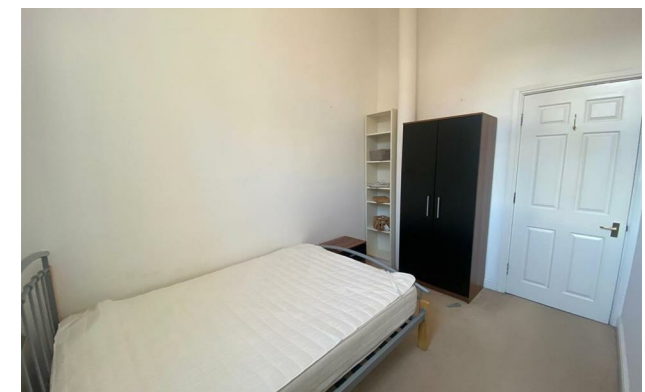
## Chepstow House Manchester M1 5JF

£1,450 Per Calendar Month

### The Property


Available Late August. Set within one of the most prestigious developments in the city centre, this exceptional two bedroom, two bathroom apartment boasts a wealth of original features with high ceilings and sash windows throughout. The property briefly comprises of entrance hallway, lounge and separate modern kitchen with fully integrated appliances, master bedroom with en suite, second bedroom and bathroom. Externally this property benefits from a secure parking space. Professionals Only. Furnished. Tax Band E. EPC Rating D.

**\*VIDEO/ PHOTO OFFERS NOT ACCEPTED - PLEASE DO CALL TO BOOK A VIEWING\***



- Available Late August
- 1st Floor Two Bed
- En-Suite & Bathroom
- Great Location
- Tax Band E
- EPC Rating D
- Parking Included
- Conversion



Energy Efficiency Rating		
	Current	Potential
Very energy efficient - lower running costs		
(92 plus) <b>A</b>		
(81-91) <b>B</b>		<b>81</b>
(69-80) <b>C</b>		
(55-68) <b>D</b>	<b>60</b>	
(39-54) <b>E</b>		
(21-38) <b>F</b>		
(1-20) <b>G</b>		
Not energy efficient - higher running costs		
<b>England &amp; Wales</b>	EU Directive 2002/91/EC 	

Available with  
**Reposit**  
 No deposit needed





These particulars are believed to be accurate but they are not guaranteed and do not form a contract. Neither Jordan Fishwick nor the vendor or lessor accept any responsibility in respect of these particulars, which are not intended to be statements or representations of fact and any intending purchaser or lessee must satisfy himself by inspection or otherwise as to the correctness of each of the statements contained in these particulars. Any floorplans on this brochure are for illustrative purposes only and are not necessarily to scale.

Offices at: Offices at Chorlton, Didsbury, Disley, Hale, Glossop, Macclesfield, Manchester Deansgate, Manchester Whitworth Street, New Mills, Sale, Wilmslow and Withington