



Jordan fishwick

Apt 28 Macintosh Mills, Cambridge Street,
£1,400 Per Calendar Month



Macintosh Mills Manchester M1 5GH

£1,400 Per Calendar Month



The Property

Available Late August. Stunning Two Bedroom, Two Bathroom apartment in Macintosh Mill, a short distance to Oxford Road, First Street and Whitworth Street. Great for professional couples!

The apartment offers fantastic living accommodation suitable for an individual or a couple, who need extra space to work from home. With a recently fitted high specification kitchen, large INDUCTION hob, integrated oven, fridge freezer and full size dishwasher, and plenty of storage space. The living area offers original Mill features with exposed brickwork and steel girders.

The master bedroom is large and bright, with tiled flooring and a stylish en-suite, and the second bedroom is large in size, and has a large fitted wardrobe and an occasional bed, set up as a home office area.

Internally the building offers a private residents' courtyard, and has bike storage. NOT SUITABLE FOR SHARERS. Tax Band D. EPC Rating C.

REPOSIT (Nil Deposit Option) is available for this property.

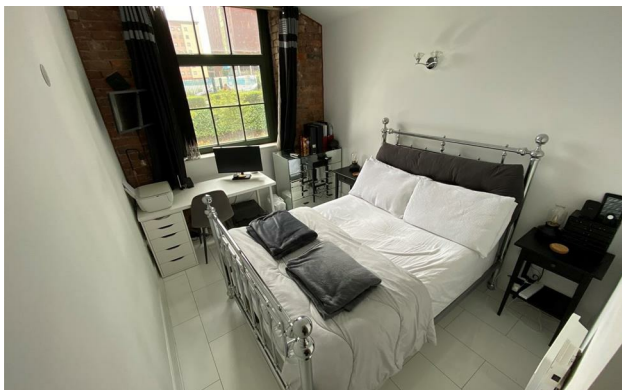
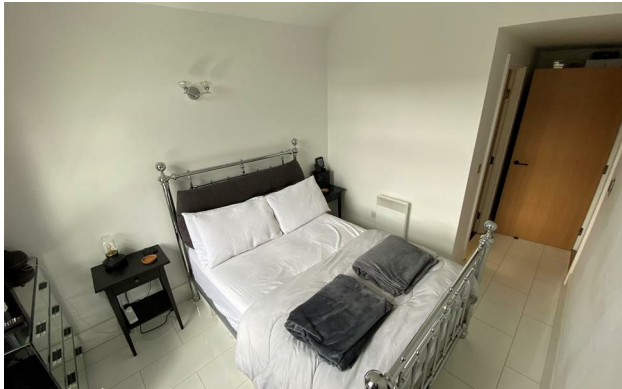
VIDEO/PHOTO OFFERS NOT ACCEPTED - PLEASE CALL TO BOOK AN IN PERSON VIEWING



- Available Early August
- Two Double Bedrooms
- Fully Furnished
- Communal Courtyard
- Tax Band D
- EPC Rating C
- Good location
- No Parking
- No Pets



Energy Efficiency Rating		
	Current	Potential
Very energy efficient - lower running costs		
(92 plus) A		
(81-91) B		87
(69-80) C	80	
(55-68) D		
(39-54) E		
(21-38) F		
(1-20) G		
Not energy efficient - higher running costs		
England & Wales	EU Directive 2002/91/EC	





These particulars are believed to be accurate but they are not guaranteed and do not form a contract. Neither Jordan Fishwick nor the vendor or lessor accept any responsibility in respect of these particulars, which are not intended to be statements or representations of fact and any intending purchaser or lessee must satisfy himself by inspection or otherwise as to the correctness of each of the statements contained in these particulars. Any floorplans on this brochure are for illustrative purposes only and are not necessarily to scale.

Offices at: Offices at Chorlton, Didsbury, Disley, Hale, Glossop, Macclesfield, Manchester Deansgate, Manchester Whitworth Street, New Mills, Sale, Wilmslow and Withington