



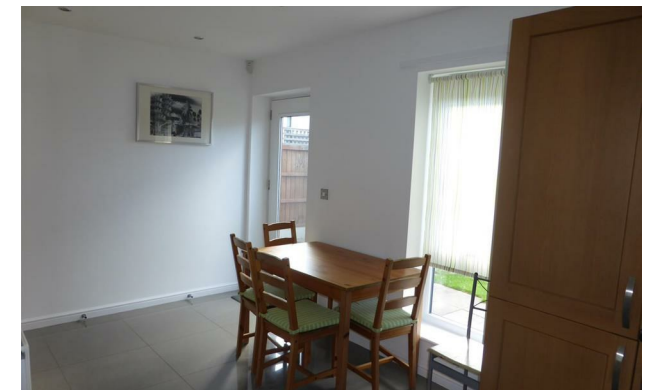
Jordan fishwick

150 Palmerston Street, M12 6AR
£1,300 Per Calendar Month



Palmerston Street Manchester M12 6AR

£1,300 Per Calendar Month



The Property


Available Early August. Furnished three double bedroom property located in Beswick which is a short distance to Manchester Piccadilly and the City Centre. This lovely corner plot has a practical layout and has excellent furnishings and fixtures throughout. Comprising of large hallway leading to open plan kitchen/diner which leads to garden. Kitchen has integrated appliances and includes dishwasher. There is a large separate living room with laminate flooring. separate downstairs WC / Utility room. Upstairs there are three generous bedrooms, which could fit a double bed in each, and a stylish family bathroom with thermostatic shower. The property benefits from a driveway for off road parking and there is on street parking additionally. Gas Central Heating throughout. EPC rating C. Tax Band B. Professionals/ Families ONLY

REPOSIT (Nil Deposit Option) Available for this property.

VIDEO/ PHOTO OFFERS NOT ACCEPTED - PLEASE CALL TO BOOK A VIEWING

- Available Early August
- Three Bedroom
- Semi Detached House
- Furnished
- Tax Band B
- EPC Rating C
- Gas Central Heating
- Driveway
- REPOSIT Available



Energy Efficiency Rating		
	Current	Potential
Very energy efficient - lower running costs		
(92 plus) A		89
(81-91) B	78	
(69-80) C		
(55-68) D		
(39-54) E		
(21-38) F		
(1-20) G		
Not energy efficient - higher running costs		
England & Wales	EU Directive 2002/91/EC 	





These particulars are believed to be accurate but they are not guaranteed and do not form a contract. Neither Jordan Fishwick nor the vendor or lessor accept any responsibility in respect of these particulars, which are not intended to be statements or representations of fact and any intending purchaser or lessee must satisfy himself by inspection or otherwise as to the correctness of each of the statements contained in these particulars. Any floorplans on this brochure are for illustrative purposes only and are not necessarily to scale.

Offices at: Offices at Chorlton, Didsbury, Disley, Hale, Glossop, Macclesfield, Manchester Deansgate, Manchester Whitworth Street, New Mills, Sale, Wilmslow and Withington