



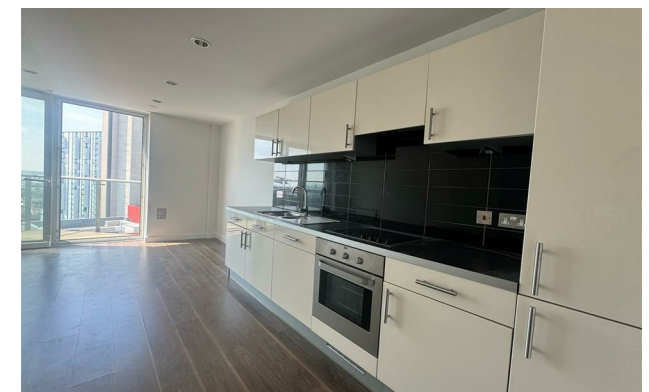
jordan fishwick

Apt 1202 No 1 Pink, Media City Uk, M50
£850 Per Calendar Month



No 1 Pink Salford Quays M50 2BA

£850 Per Calendar Month



The Property

Available Now. Welcome to this 12th Floor UNFURNISHED studio apartment located in the vibrant area of Media City UK, Salford. The apartment features a large open living space which provides a comfortable space for rest and relaxation. You'll also find a well-maintained bathroom, offering convenience and functionality.


Situated in the heart of Media City UK, this apartment is ideal for those looking to immerse themselves in a bustling community with plenty of amenities nearby. Whether you enjoy dining out at trendy restaurants, exploring cultural attractions, or simply taking a leisurely stroll by the waterfront, this location has something for everyone.

This studio apartment is a fantastic opportunity for students and young professionals. No Parking available/ no pets. Tax Band B, EPC rating B.

VIDEO/PHOTO OFFERS NOT ACCEPTED - PLEASE CALL TO BOOK A VIEWING

- Available Now
- 12th Floor Studio Apartment
- Unfurnished
- Balcony
- River Side View
- EPC rating B
- No Parking/ Bike storage available
- Tax Band B
- Close to City Centre/ Close to transport links



Energy Efficiency Rating		
	Current	Potential
Very energy efficient - lower running costs		
(92 plus) A		
(81-91) B	82	82
(69-80) C		
(55-68) D		
(39-54) E		
(21-38) F		
(1-20) G		
Not energy efficient - higher running costs		
England & Wales	EU Directive 2002/91/EC 	





These particulars are believed to be accurate but they are not guaranteed and do not form a contract. Neither Jordan Fishwick nor the vendor or lessor accept any responsibility in respect of these particulars, which are not intended to be statements or representations of fact and any intending purchaser or lessee must satisfy himself by inspection or otherwise as to the correctness of each of the statements contained in these particulars. Any floorplans on this brochure are for illustrative purposes only and are not necessarily to scale.

Offices at: Offices at Chorlton, Didsbury, Disley, Hale, Glossop, Macclesfield, Manchester Deansgate, Manchester Whitworth Street, New Mills, Sale, Wilmslow and Withington