



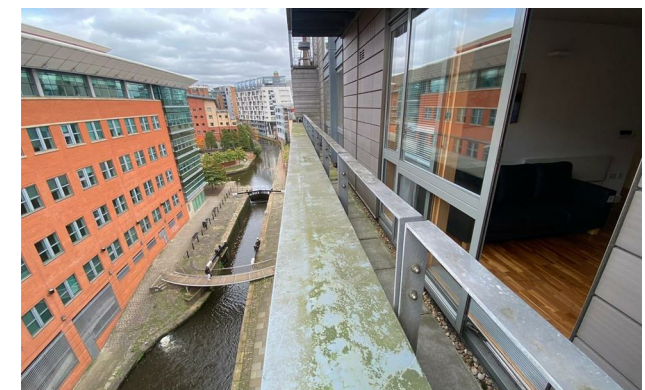
*Jordan fishwick*

Apt 510 Hacienda, Whitworth Street West,  
£1,400 Per Calendar Month



## Hacienda Manchester M1 5DE

£1,400 Per Calendar Month




### The Property

Available Early July This two bedroom two bathroom apartment at the infamous Hacienda apartments. This 5th floor apt overlooks the Rochdale canal benefits from approximately 800 sq ft of living space with two excellent size double bedrooms, a stylishly appointed bathroom and en-suite and an open plan living/kitchen area. The apartment comes with a balcony which benefits from a canal view. There is ample storage space and the ultra modern kitchen benefits from integrated appliances such as fridge/freezer, dishwasher, electric oven and ceramic hob. Furnished. No Parking. Tax Band E. EPC Rating C.

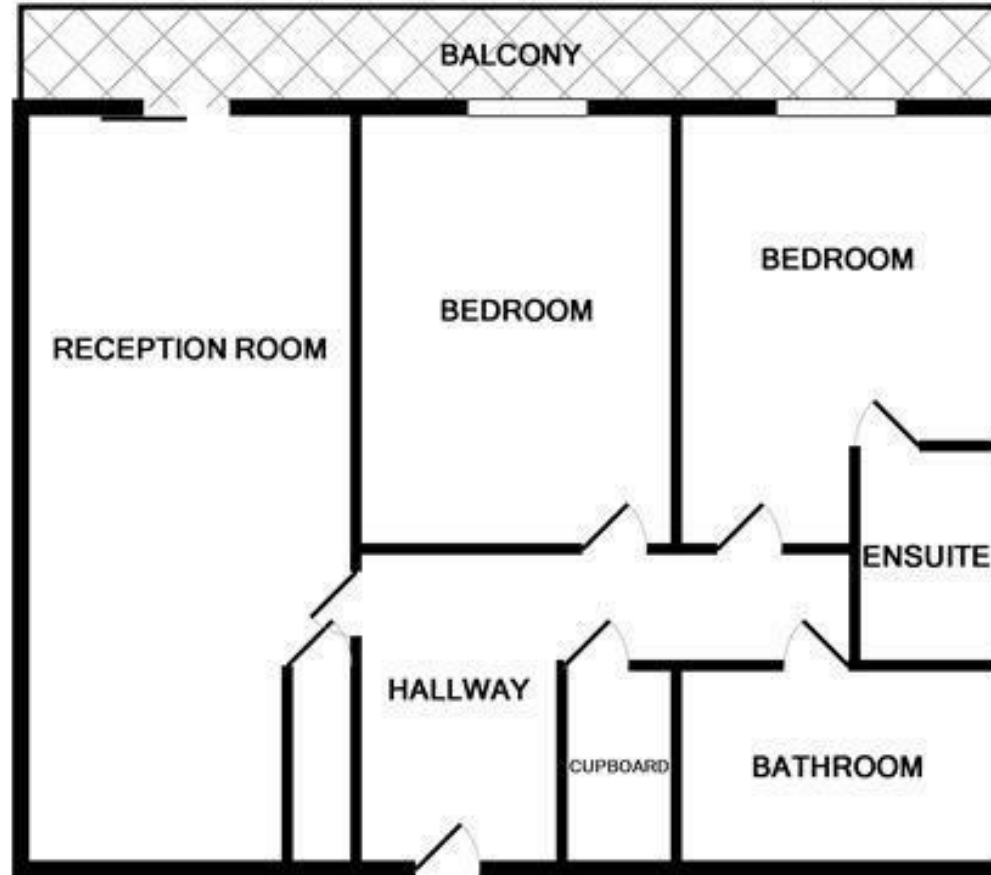
\*VIDEO/PHOTO OFFERS NOT ACCEPTED - PLEASE CALL TO BOOK A VIEWING\*

- Available Early July
- 5th Floor Apartment
- Two Double Bedrooms - Furnished
- Ensuite in Master Bedroom
- Balcony with Canal View
- Tax band E
- EPC Rating C.
- No Parking
- Close to Transport links/ Universities



Energy Efficiency Rating		
	Current	Potential
Very energy efficient - lower running costs		
(92 plus) <b>A</b>		
(81-91) <b>B</b>		<b>84</b>
(69-80) <b>C</b>	<b>78</b>	
(55-68) <b>D</b>		
(39-54) <b>E</b>		
(21-38) <b>F</b>		
(1-20) <b>G</b>		
Not energy efficient - higher running costs		
<b>England &amp; Wales</b>	EU Directive 2002/91/EC 	





Whilst every attempt has been made to ensure the accuracy of the floor plan contained here, measurements of doors, windows, rooms and any other items are approximate and no responsibility is taken for any error, omission, or mis-statement. This plan is for illustrative purposes only and should be used as such by any prospective purchaser. The services, systems and appliances shown have not been tested and no guarantee as to their operability or efficiency can be given.  
 Made with Metropix ©2010



These particulars are believed to be accurate but they are not guaranteed and do not form a contract. Neither Jordan Fishwick nor the vendor or lessor accept any responsibility in respect of these particulars, which are not intended to be statements or representations of fact and any intending purchaser or lessee must satisfy himself by inspection or otherwise as to the correctness of each of the statements contained in these particulars. Any floorplans on this brochure are for illustrative purposes only and are not necessarily to scale.

Offices at: Offices at Chorlton, Didsbury, Disley, Hale, Glossop, Macclesfield, Manchester Deansgate, Manchester Whitworth Street, New Mills, Sale, Wilmslow and Withington