



Apt 506 The Hacienda, 11 - 15 Whitworth Street West, Manchester, M1 5DD

Jordan Fishwick are pleased to offer for sale this 5th floor apt, No chain, overlooking the Rochdale canal benefiting from approximately 860 sq ft of living space. The apartment boasts two excellent size double bedrooms, a stylishly appointed bathroom and en-suite and an open plan living/kitchen area. The apartment comes with a balcony off the living room. There is ample storage space and the ultra modern kitchen benefits from integrated appliances such as fridge/freezer, dishwasher, electric oven and ceramic hob.. A mixture of wooden flooring and carpets throughout the property. 24 hour concierge and underground allocated parking space. . EWS1 IN PLACE.

Price £259,950

Viewing arrangements

Viewing strictly by appointment through the agent
245 Deansgate, Manchester, M3 4EN 0161 833 9499 opt 3

Entrance Hall

Wooden flooring with storage cupboard and cupboard housing hot water system. Electric heater, doors leading to all rooms.

Living Room

27'1" x 11'5"

Beautiful room with wooden flooring, large windows with a sliding door to the balcony, t.v and telephone points, electric heater and open through to the kitchen.

Kitchen

Quality wall and base units with microwave, oven, hob and extractor hood, separate fridge and freezer and dishwasher. Tiled floor and entry phone system. Storage cupboard

Bedroom One

8'10" x 18'4"

Fitted carpet, Double glazed window, electric heater and t.v point.

En-Suite

Large walk-in shower cubicle, wash hand basin and w.c.

Fitted mirror, chrome heated towel rail and tiled floor. Shaver point.

Bedroom Two

8'2" x 14'9"

Fitted carpet Double glazed window, electric heater and t.v point.

Bathroom

Three piece suite with tiled bath panel and shower over, wash hand basin and w.c. Fitted mirror unit with display plinth. Chrome heated towel rail and shaver point. Tiled floor.

Externally

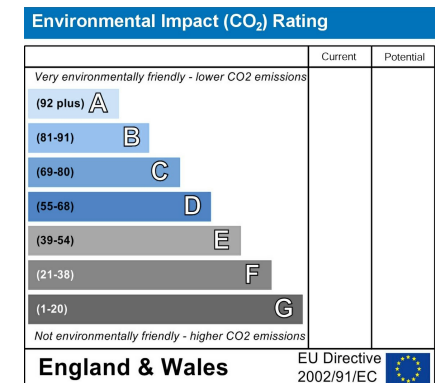
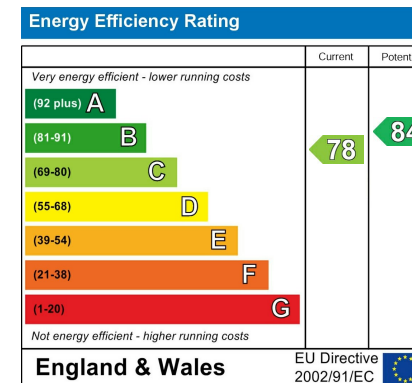
24 hour concierge and allocated parking space.

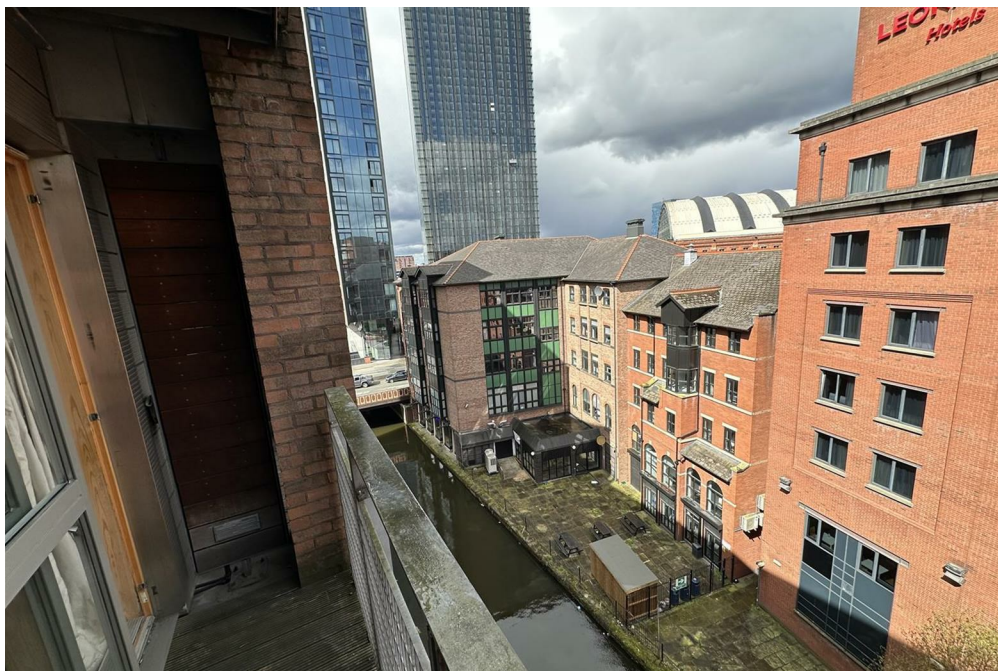
Additional Information

Service Charge £382.78 per month

Lease 125 years from 2003. Fixed for 25 years then increasing with RPI every 10 years.

Ground Rent £250pa







Measurements are approximate. Not to scale. Illustrative purposes only
Made with Metropix ©2018



These particulars are believed to be accurate but they are not guaranteed and do not form a contract. Neither Jordan Fishwick nor the vendor or lessor accept any responsibility in respect of these particulars, which are not intended to be statements or representations of fact and any intending purchaser or lessee must satisfy himself by inspection or otherwise as to the correctness of each of the statements contained in these particulars. Any floorplans on this brochure are for illustrative purposes only and are not necessarily to scale.

Offices at: Chorlton, Didsbury, Disley, Hale, Glossop, Macclesfield, Manchester Deansgate, Manchester Whitworth Street, New Mills, Sale, Wilmslow and Withington

245 Deansgate, Manchester, M3 4EN

0161 833 9499 opt 3

manchester@jordanfishwick.co.uk
www.jordanfishwick.co.uk

