



Apt 1502 Britton House, 21 Lord Street, Green Quarter, Manchester, M4 4FQ

INVESTMENT OPPORTUNITY - RENTED UNTIL 1ST NOV 2024 AT £1150 PCM - 7.4% YIELD!

Although a cash buyer is required, the government have recently confirmed a cap of £10,000 per apartment to remediate fire safety issues across buildings over 18m in the UK Jordan Fishwick are delighted to bring to the market this immaculately presented 15th floor apartment in Britton House, a development by Crosby homes set amongst an urban oasis in Manchester's Green quarter. This spacious two double bedroom apartment is perfect for the busy city dweller looking for a relaxed and contemporary living environment. The apartment has a private balcony that provides spectacular views.. The kitchen is modern in design with integrated appliances, comfortable living area and the master benefits from an en-suite. This apartment comes with a SECURE ALLOCATED PARKING SPACE. NO ONGOING CHAIN.

Price £185,000

Viewing arrangements

Viewing strictly by appointment through the agent
245 Deansgate, Manchester, M3 4EN 0161 833 9499 opt 3

Entrance Hall

Living/Kitchen

22'10" x 11'11"

Bedroom One

11'1" x 10'4"

En-Suite

7'9" x 3'10"

Bedroom Two

10'5" x 9'9"

Bathroom

7'6" x 6'9"

Balcony

Glass and decked balcony off the living room

Externally

Allocated underground parking space

Additional Information

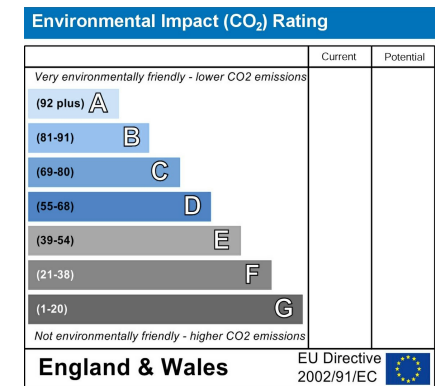
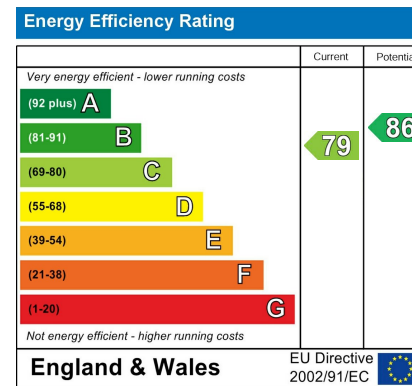
Service Charge £642 Per Quarter

Ground Rent £250 pa

Lease 150 years from 2009

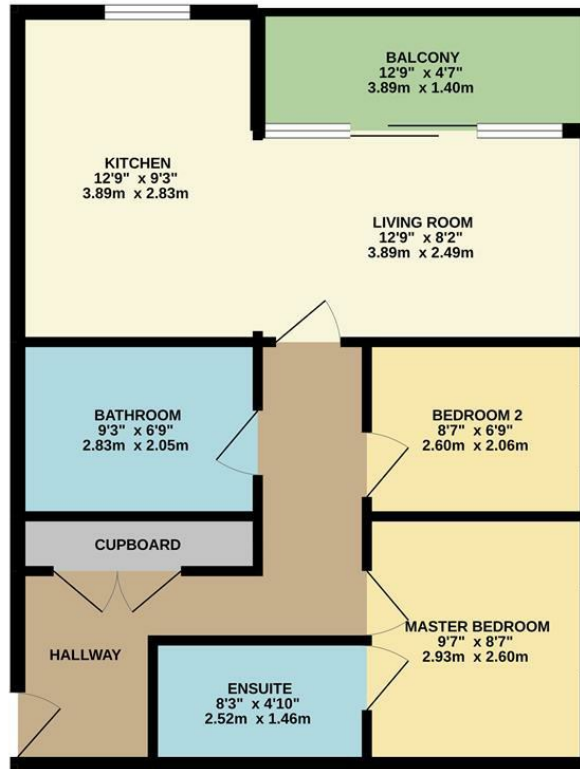
Council Tax Band D

Building Management- living City





GROUND FLOOR



Measurements are approximate. Not to scale. Illustrative purposes only.
Made with Metropix ©2022



These particulars are believed to be accurate but they are not guaranteed and do not form a contract. Neither Jordan Fishwick nor the vendor or lessor accept any responsibility in respect of these particulars, which are not intended to be statements or representations of fact and any intending purchaser or lessee must satisfy himself by inspection or otherwise as to the correctness of each of the statements contained in these particulars. Any floorplans on this brochure are for illustrative purposes only and are not necessarily to scale.

Offices at: Chorlton, Didsbury, Disley, Hale, Glossop, Macclesfield, Manchester Deansgate, Manchester Whitworth Street, New Mills, Sale, Wilmslow and Withington

245 Deansgate, Manchester, M3 4EN

0161 833 9499 opt 3

manchester@jordanfishwick.co.uk

www.jordanfishwick.co.uk

