



jordanfishwick

HULME
Loxford Court



Loxford Court, Hulme M156AF

Offers in excess of £140,000



The Property

VIRTUAL TOUR AVAILABLE <https://www.youtube.com/watch?v=VpLWWXzF4dA>
Investment Opportunity! Jordan Fishwick are pleased to offer this TWO BEDROOM top floor apartment on the cusp of Manchester city centre in need of modernisation. The apartment offers a large living/dining room, separate kitchen, two good size double bedrooms offering nice skyline views and a bathroom. Gas central heated. Double glazed. FULL REFURBISHMENT REQUIRED. Secure parking available. Lift to all floors. NO CHAIN.

Directions

Loxford Court is located on the cusp of the City Centre and Hulme. Its 10 minutes walk to Deansgate station and Oxford St station.



- Two Bedroom Apartment
- Fifth Floor
- In Need Of Modernisation
- Fantastic Location
- Secure Parking
- Separate Kitchen
- Lifts to All Floors
- NO CHAIN

Postcode - M156AF

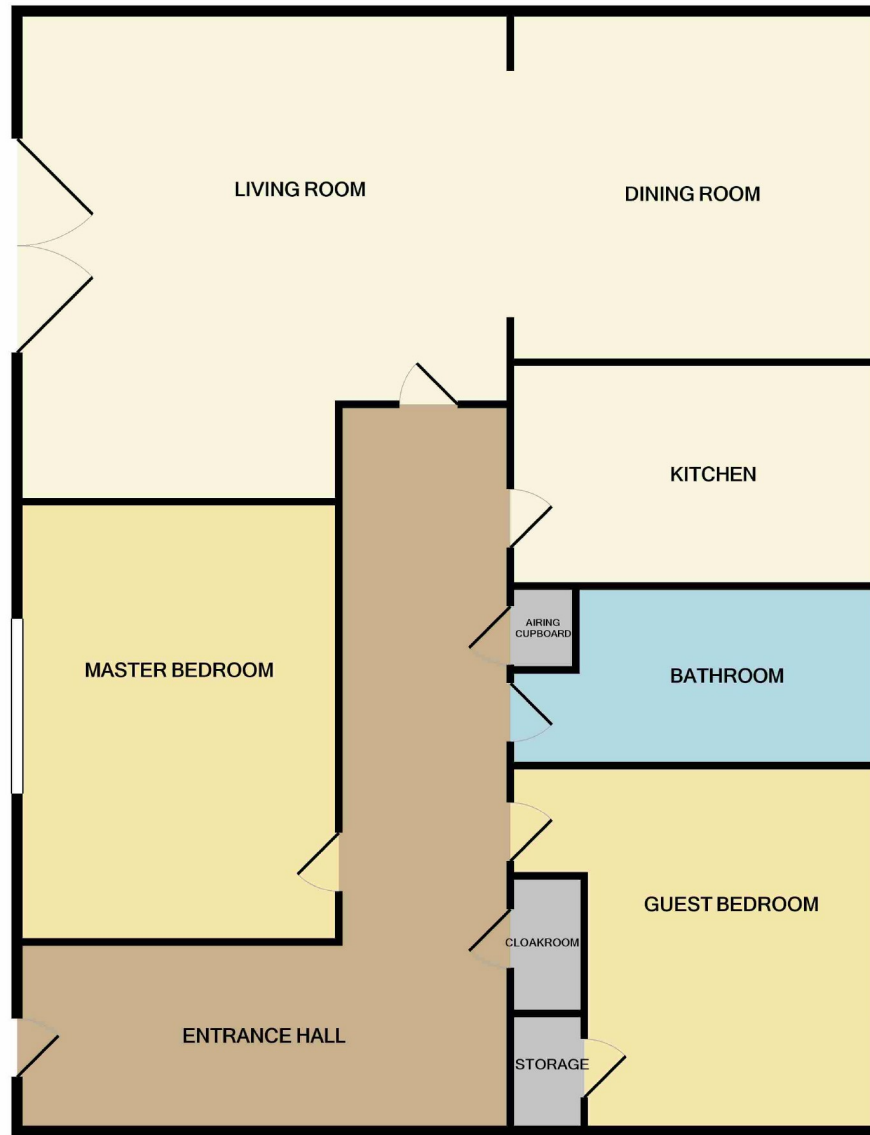
EPC Rating -

Floor Area - sq ft

Local Authority - Manchester Council

Council Tax - Band





Measurements are approximate. Not to scale. Illustrative purposes only
 Made with Metropix ©2022



These particulars are believed to be accurate but they are not guaranteed and do not form a contract. Neither Jordan Fishwick nor the vendor or lessor accept any responsibility in respect of these particulars, which are not intended to be statements or representations of fact and any intending purchaser or lessee must satisfy himself by inspection or otherwise as to the correctness of each of the statements contained in these particulars. Any floorplans on this brochure are for illustrative purposes only and are not necessarily to scale.

Offices also at:
 Chorlton | Didsbury | Disley | Glossop | Hale | Macclesfield | Manchester | Sale | Wilmslow | Withington

68 The Arches, Whitworth Street West, Manchester, M1

0161 833 9499

manchester@jordanfishwick.co.uk

www.jordanfishwick.co.uk