



Jordan fishwick

DEANSGATE
Beetham Tower



Beetham Tower, Deansgate M3 4LX Price £2,750,000



The Property

Online Video....

An amazing four bedroom one off apartment set over three floors offering a unique City Centre Living experience. The World renowned Beetham Tower which houses the Hilton Hotel Manchester below is perfectly located on downtown Deansgate with all the amenities on your doorstep which you would expect to find in any city.

Whether you are sat in one of the open plan living spaces, enclosed on the decked balcony or entertaining in the dining/kitchen, the spectacular views, natural light and ambiance is all around you. A breathtaking property with endless uses

from main residence, 2nd home or corporate retreat.

The 3 levels give over 4400 sq.ft of space and is finished and furnished beautifully (Furnishing by separate negotiation).

Directions

Beetham Tower is a world renowned building located at the end of Deansgate, close to Castlefield, Deansgate station and excellent road network to Liverpool or Cheshire.



- Triplex Stunning Apartment
- Unrivalled Views Over The City
- Five Parking Spaces
- 4448 Sq Ft Of Space
- Three Balconies
- Beautiful Living Room
- Contemporary Kitchen
- 24 Hour Concierge

Postcode - M3 4LX

EPC Rating - B

Floor Area - 4448 sq ft

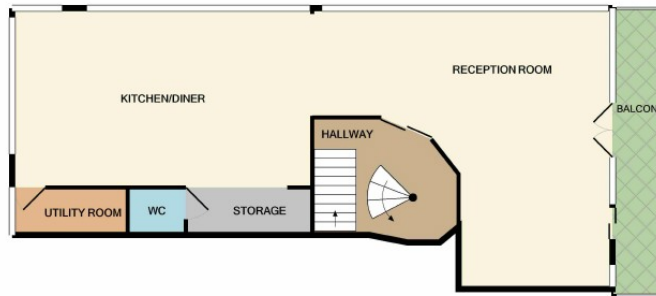
Local Authority - Manchester Council

Council Tax - Band H

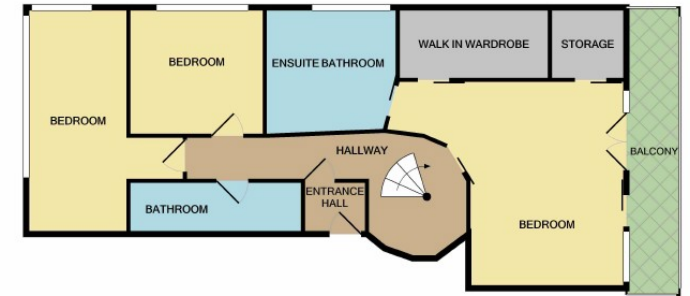




44TH FLOOR



45TH FLOOR



46TH FLOR

Measurements are approximate. Not to scale. Illustrative purposes only.
Made with Metropix ©2021



These particulars are believed to be accurate but they are not guaranteed and do not form a contract. Neither Jordan Fishwick nor the vendor or lessor accept any responsibility in respect of these particulars, which are not intended to be statements or representations of fact and any intending purchaser or lessee must satisfy himself by inspection or otherwise as to the correctness of each of the statements contained in these particulars. Any floorplans on this brochure are for illustrative purposes only and are not necessarily to scale.

Offices also at:
Chorlton | Didsbury | Disley | Glossop | Hale | Macclesfield | Manchester | Sale | Wilmslow | Withington

68 The Arches, Whitworth Street West, Manchester, M1

0161 833 9499

manchester@jordanfishwick.co.uk

www.jordanfishwick.co.uk