

86 Old Church Road
Chingford
E4 8BX

T: 0208 524 7444
www.kings-group.net



Sewardstone Road, E4 7QA



Guide Price £665,000 Freehold

5 BEDROOM SEMI-DETACHED HOUSE

Kings Group of Chingford are delighted to offer to the market as exclusive agents this immaculately presented five bedroom semi-detached family home.

Situated on the ever popular Sewardstone road and just a few minutes walk to Yardly primary School this property is in the perfect location and also the perfect size for a large family. The property also has great travel routes with easy access to the A406 and the M25 or for those who commute into central London the property is a short journey to Chingford Train station and the local amenities.

The property itself is arranged over three floors. The ground floor is comprised large living space, a separate dining room as well as a newly finished kitchen and WC. The Living room is perfect for hosting family and guests as well as also containing French doors leading to the east facing garden that provides ample lighting in the morning hours of the day to make the room feel bright and airy.

The kitchen has been finished with modern white base & eye level units, integrated appliances and roll top work surfaces as well as a very chic dark wooden flooring. The ground floor also includes a WC, ideal and convenient for modern family living.

To the first floor provides three generously sized bedrooms of which you have two doubles and a spacious single. The family bathroom has been tastefully finished with both a shower enclosure and a modern white three piece suite.

And finally to the second floor another 2 generously sized bedroom both giving ample light from skylights.

This property has a paved frontage large enough for 3 to 4 cars and to the rear you have a partially decked and laid to lawn garden with side access as well as a large garage.

Call our office now to arrange your viewing and avoid disappointment.

Council Tax Band - E
Tenure - Freehold
EPC - D

lounge 13'8 x 11'10

Dining Room 19 x 11'1

Kitchen 18'11 x 7'5

Bedroom 13'6 x 11'10

Bedroom 14 x 8'11

Bedroom 15 '1 x7

Bathroom 11'4 x 6'9

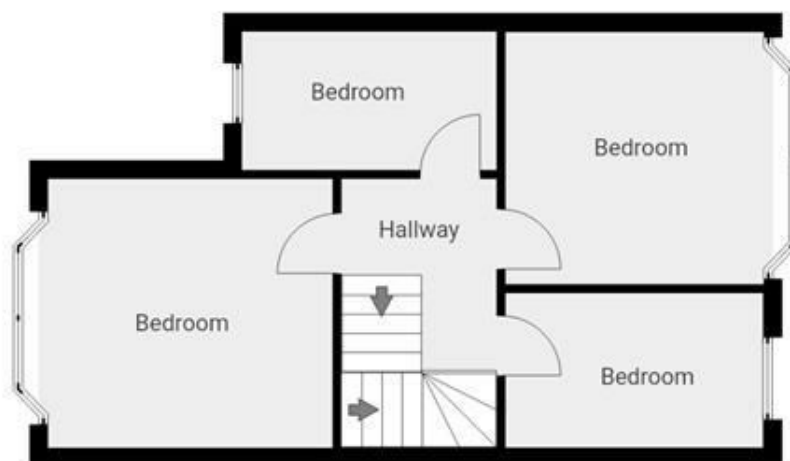
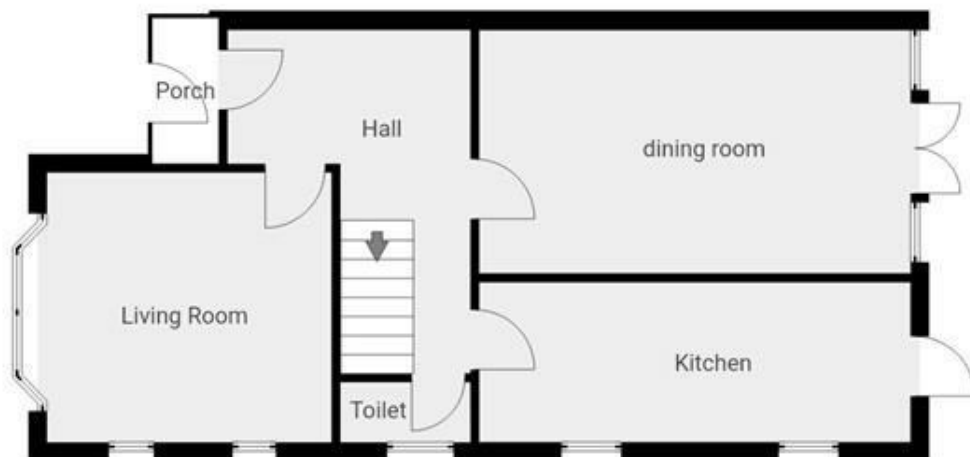
Bedroom 15'5 x 7

bedroom 11 x 6

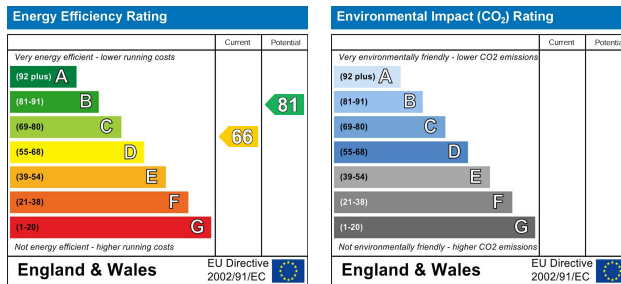
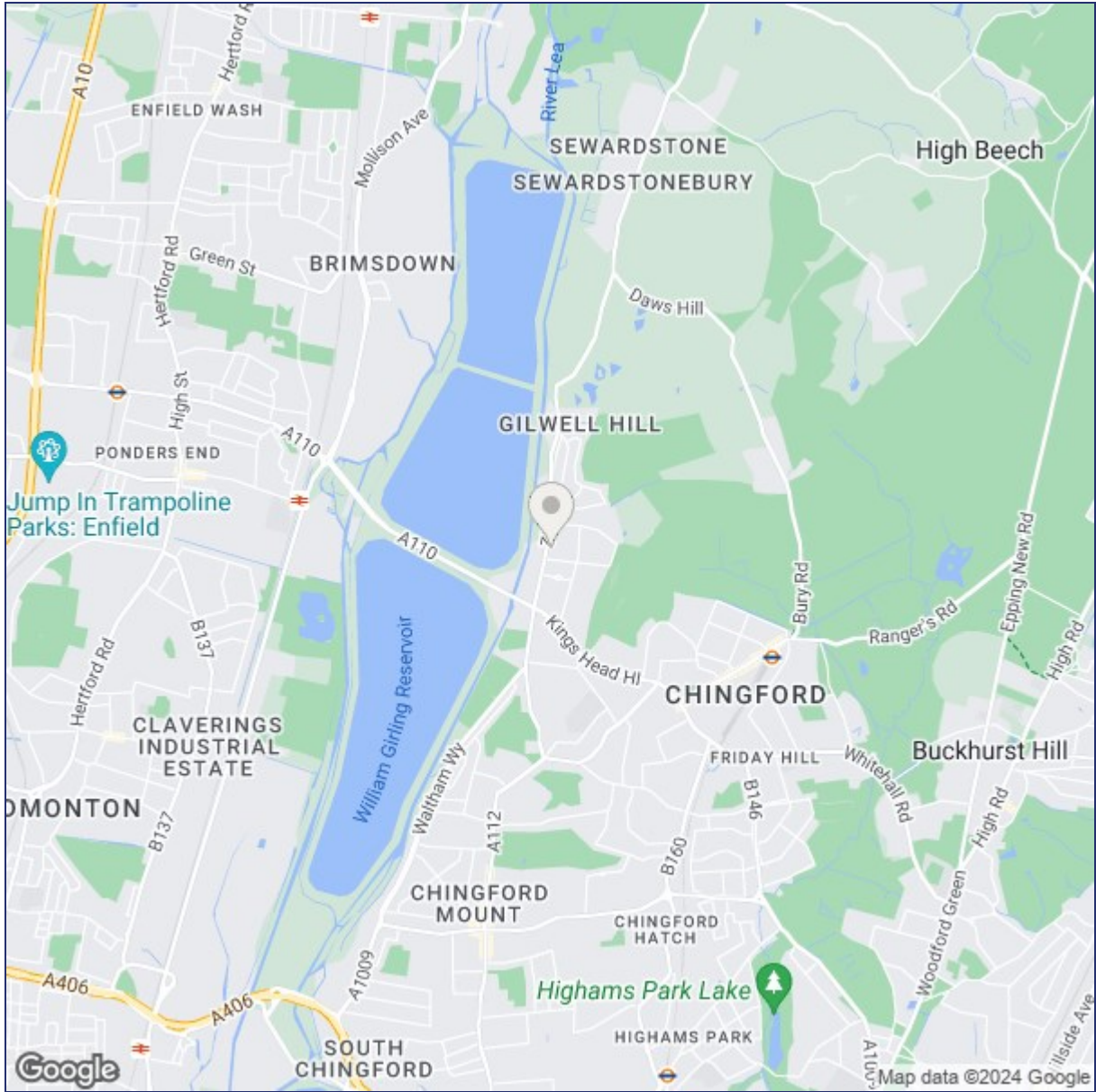
DISCLAIMER

1. MONEY LAUNDERING REGULATIONS: Intending purchasers will be asked to produce identification documentation at a later stage and we would ask for your co-operation in order that there will be no delay in agreeing the sale.
2. General: While we endeavour to make our sales particulars fair, accurate and reliable, they are only a general guide to the property and, accordingly, if there is any point which is of particular importance to you, please contact the office and we will be pleased to check the position for you
3. The measurements indicated are supplied for guidance only and as such must be considered incorrect.
4. Services: Please note we have not tested the services or any of the equipment or appliances in this property, accordingly we strongly advise prospective buyers to commission their own survey or service reports before finalising their offer to purchase.
5. References to tenure of a property are based upon information supplied by the vendor. The agent has not had sight of the title documents, a buyer is advised to obtain verification from their solicitor.
6. THESE PARTICULARS ARE ISSUED IN GOOD FAITH BUT DO NOT CONSTITUTE REPRESENTATIONS OF FACT OR FORM PART OF ANY OFFER OR CONTRACT. THE MATTERS REFERRED TO IN THESE PARTICULARS SHOULD BE INDEPENDENTLY VERIFIED BY PROSPECTIVE BUYERS OR TENANTS. KINGS GROUP NOR ANY OF ITS EMPLOYEES OR AGENTS HAS ANY AUTHORITY TO MAKE OR GIVE ANY REPRESENTATION OR WARRANTY WHATSOEVER IN RELATION TO THIS PROPERTY.





THIS FLOORPLAN IS PROVIDED WITHOUT WARRANTY OF ANY KIND. SENSOPIA DISCLAIMS ANY WARRANTY INCLUDING, WITHOUT LIMITATION, SATISFACTORY QUALITY OR ACCURACY OF DIMENSIONS.



("These details are correct at time of going to press").

THE PROPERTY MISDESCRIPTIONS ACT 1991. The agent has not tested any apparatus, equipment, fixtures or services and so cannot verify that they are in working order, or fit for the purpose. References to the Tenure of a property are based on information supplied by the vendor. The agent has not had sight of the Title documents. A buyer is advised to obtain verification from their Solicitor or Surveyor.

