

HARWOOD

THE ESTATE AGENT

01952 881010

20 Haycop Rise, Broseley TF12 5LQ



£ 4 3 5, 0 0 0 region

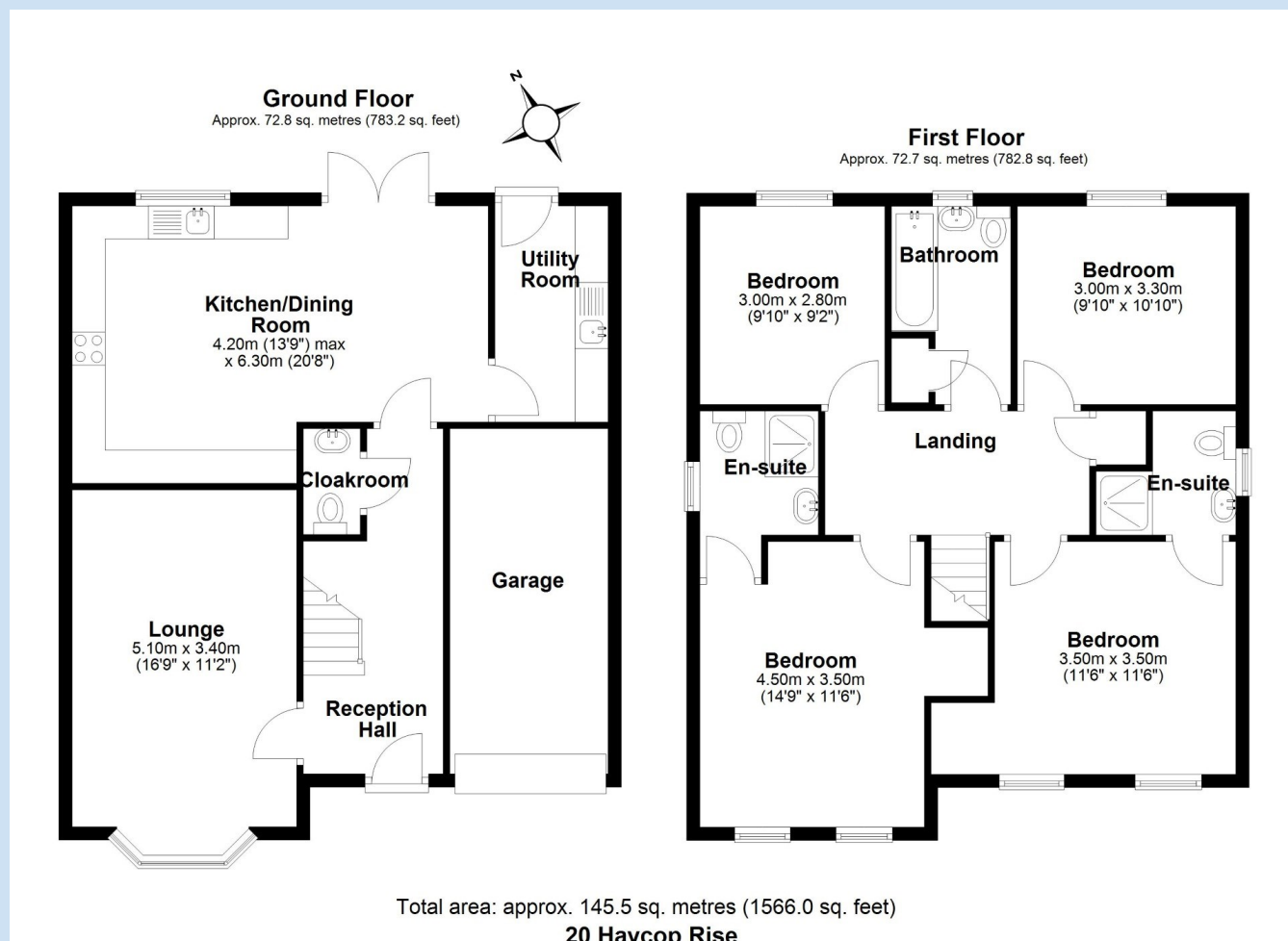
This beautifully presented four-bedroom detached family home is ideally situated within easy walking distance of local schools, shops, and the many amenities Broseley has to offer. The accommodation is thoughtfully designed and includes a welcoming reception hallway with guest cloakroom, a spacious lounge featuring a bay window, and at the heart of the home, an impressive open-plan kitchen and dining area, perfect for family life and entertaining. An adjacent utility room provides additional practicality and storage space. On the first floor, there are four double bedrooms, two of which benefit from en-suite shower rooms, along with a stylish family bathroom. Outside, the property offers ample driveway parking leading to a single garage. The landscaped rear garden provides a lovely private space for relaxing or entertaining, complete with patio seating areas and well-maintained planting.

Score	Energy rating	Current	Potential
92+	A		92 A
81-91	B	83 B	
69-80	C		
55-68	D		
39-54	E		
21-38	F		
1-20	G		









Tenure Freehold **Council tax** Band E

Fixtures & Fittings Where specifically mentioned in these sales particulars are included in the sale price.

N.B Please note, that none of the services, heating systems or any appliances at this property have been tested, therefore no warranty can be given or implied as to their working order. These particulars do not constitute or form a part of any contract. Whilst Harwood Estate Agents and their employees take every care in the preparation of these particulars they hereby state both on behalf of themselves and the vendor that no intending purchaser should rely on any of the statements of representation of fact and the intending purchaser should make his/her own inspection and enquiries in order to satisfy himself/herself of their authenticity and no responsibility is accepted for any error or omission herein.

Details prepared : 5th November 2025