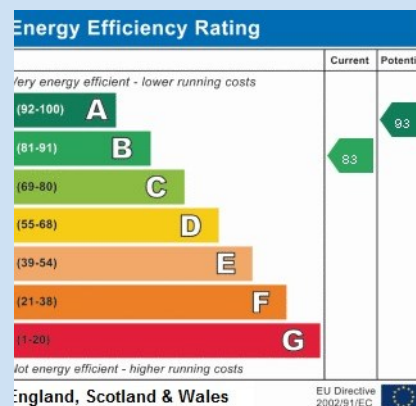


58 Woodings Drive, Lawley TF3 5JH



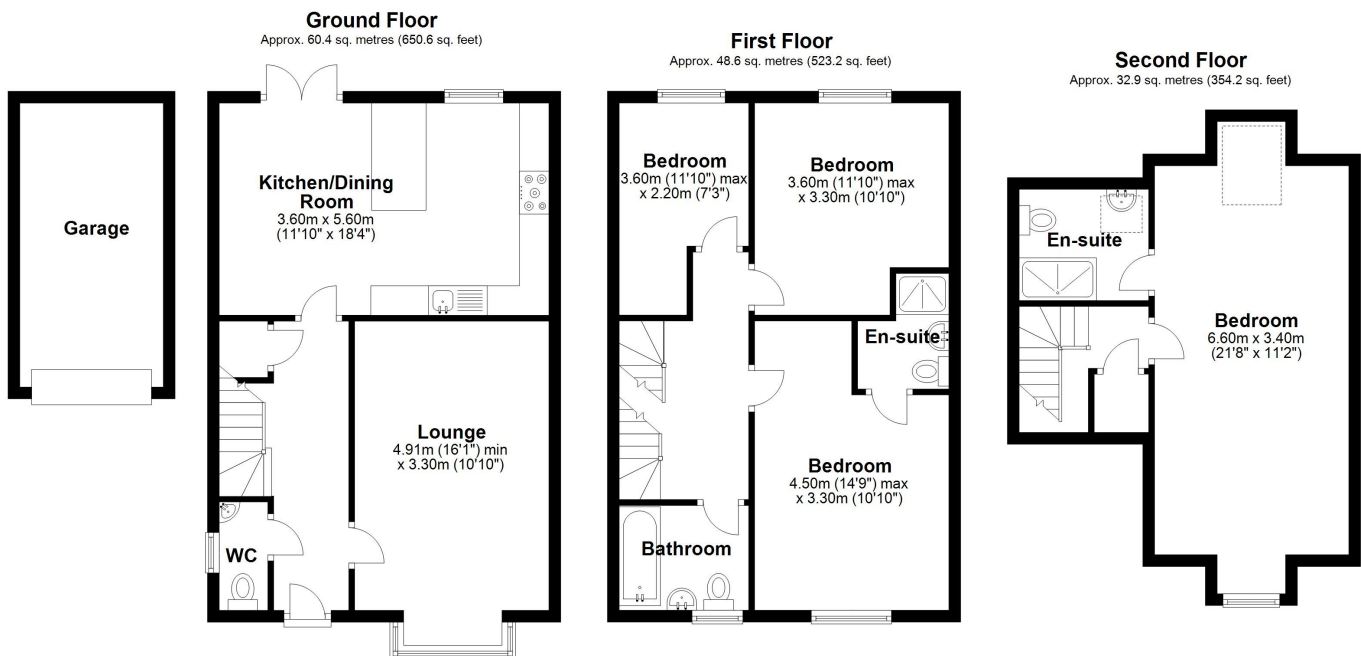
£ 3 1 5, 0 0 0 r e g i o n

Well presented three storey family home located in the popular area of Lawley, with easy access to local schooling and a wide range of amenities. The accommodation includes entrance hall with W.C., lounge and spacious kitchen/diner with patio doors opening out to the rear. The first floor offers three bedrooms (one with en-suite shower room) and family bathroom, with a further principle bedroom located on the second floor with a large en-suite shower room. Driveway parking, single garage and an enclosed garden to the rear with patio area and lawn. This location offers excellent access to the national road and rail network.









Total area: approx. 142.0 sq. metres (1528.0 sq. feet)

Tenure Freehold **Council tax** Band D

Fixtures & Fittings Where specifically mentioned in these sales particulars are included in the sale price.

N.B Please note, that none of the services, heating systems or any appliances at this property have been tested, therefore no warranty can be given or implied as to their working order. These particulars do not constitute or form a part of any contract. Whilst Harwood Estate Agents and their employees take every care in the preparation of these particulars they hereby state both on behalf of themselves and the vendor that no intending purchaser should rely on any of the statements of representation of fact and the intending purchaser should make his/her own inspection and enquiries in order to satisfy himself/herself of their authenticity and no responsibility is accepted for any error or omission herein.

Details prepared : 1st April 2022