

4 Foundry Mews, Coalbrookdale TF8 7AX



£ 2 7 0, 0 0 0

Located in Coalbrookdale, close to the lovely Dale End Park and with easy access of historic Ironbridge's many attractions. The well presented accommodation includes entrance hallway with W.C., well proportioned lounge/diner with double doors out to the rear, and a kitchen with a window overlooking Dale Road. The first floor features two good sized bedrooms (the main bedroom benefits from an en-suite shower room) plus a family bathroom. There is a small enclosed garden to the rear and an allocated parking space. With lovely walks straight from the door and many options for dining out, this super location makes an ideal base, bearing in mind that Telford Town Centre and the national motorway network is just a fifteen minute drive away.

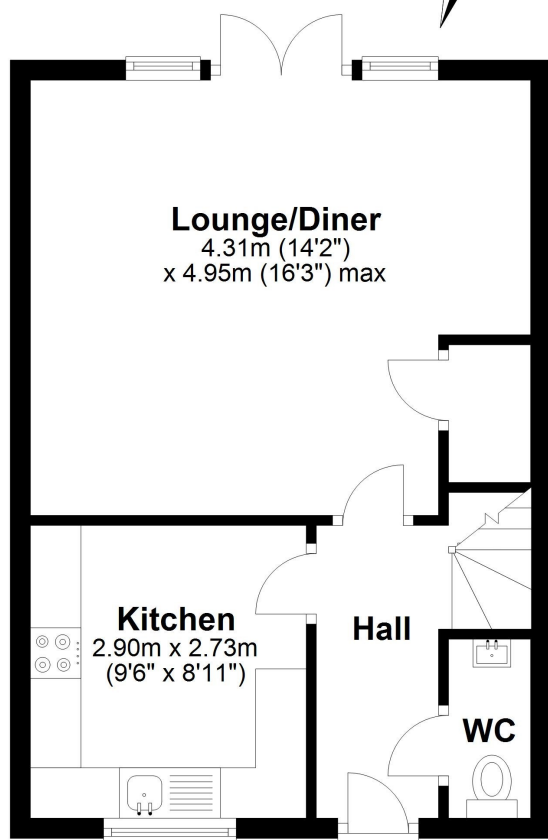
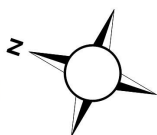






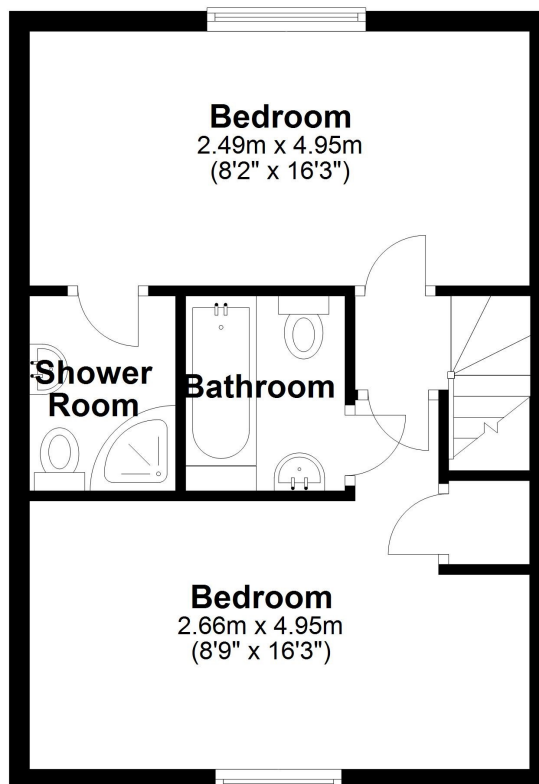
Ground Floor

Approx. 36.2 sq. metres (389.6 sq. feet)



First Floor

Approx. 35.9 sq. metres (386.4 sq. feet)



Total area: approx. 72.1 sq. metres (776.0 sq. feet)

Tenure Freehold

Council tax Band B

Fixtures & Fittings Where specifically mentioned in these sales particulars are included in the sale price.

N.B Please note, that none of the services, heating systems or any appliances at this property have been tested, therefore no warranty can be given or implied as to their working order. These particulars do not constitute or form a part of any contract. Whilst Harwood Estate Agents and their employees take every care in the preparation of these particulars they hereby state both on behalf of themselves and the vendor that no intending purchaser should rely on any of the statements of representation of fact and the intending purchaser should make his/her own inspection and enquiries in order to satisfy himself/herself of their authenticity and no responsibility is accepted for any error or omission herein.

Details prepared : 28th May 2024