

8 The Heighways, Upper Count SY5 6AR



£ 3 7 5, 0 0 0 region

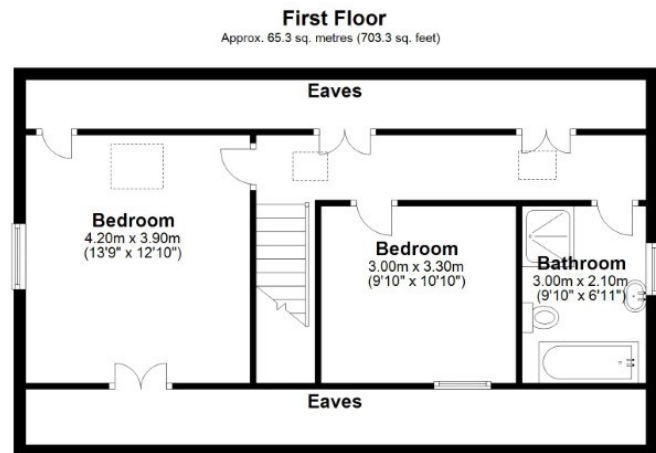
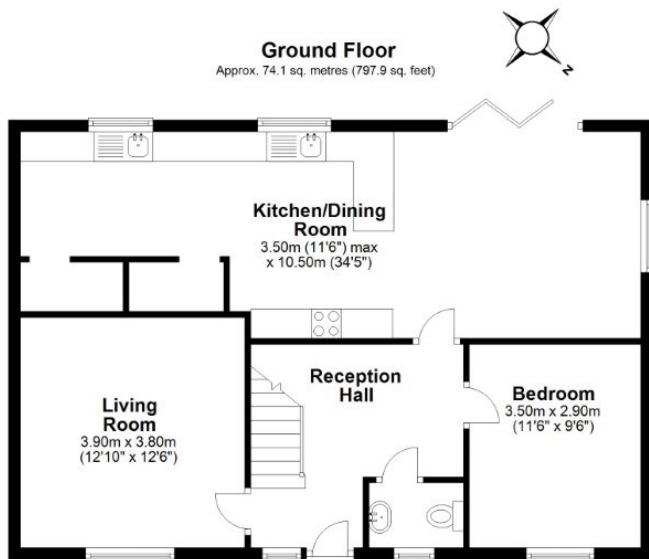
This detached dormer bungalow is located in the sought after hamlet of Upper Count, surrounded by farmland and within a fifteen minute drive of Shrewsbury and Much Wenlock. The accommodation includes a large reception hallway with guest cloaks, living room with woodburner, spacious open plan kitchen/diner with bifold doors out to the garden and a ground floor bedroom. The first floor offers two further bedrooms with useful eaves storage and a family bathroom with both bath and shower. There is driveway parking, a detached garage and gardens that include a variety of mature shrubs and trees, a lawned area and vegetable patch. Upper Count offers a village church, cricket club, tennis club and there is a popular riverside public house less than two miles away.

Score	Energy rating	Current	Potential
92+	A		
81-91	B		
69-80	C		72 C
55-68	D		
39-54	E	53 E	
21-38	F		
1-20	G		









8 the heighways

Tenure Freehold **Council tax** Band D

Fixtures & Fittings Where specifically mentioned in these sales particulars are included in the sale price.

N.B Please note, that none of the services, heating systems or any appliances at this property have been tested, therefore no warranty can be given or implied as to their working order. These particulars do not constitute or form a part of any contract. Whilst Harwood Estate Agents and their employees take every care in the preparation of these particulars they hereby state both on behalf of themselves and the vendor that no intending purchaser should rely on any of the statements of representation of fact and the intending purchaser should make his/her own inspection and enquiries in order to satisfy himself/herself of their authenticity and no responsibility is accepted for any error or omission herein.

Details prepared : 7th February 2023