

Gorge View, Woodlands Rd, Broseley Wood TF12 5PX



£ 2 6 4, 9 5 0 region

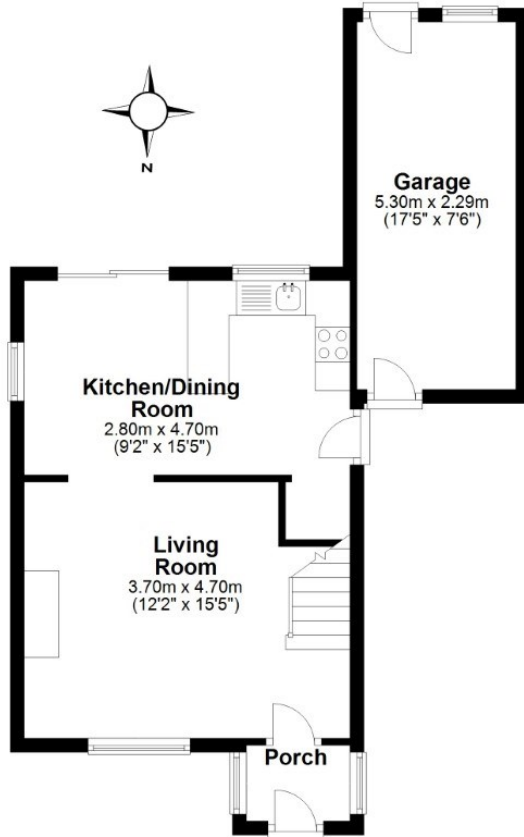
Three bedroom detached house in an enviable location, positioned opposite the Maypole in Broseley Wood and benefiting from far reaching views and some lovely local walks. The accommodation includes entrance porch, spacious living room with feature fireplace and a kitchen diner with patio doors out to the rear. The first floor offers three bedrooms and family bathroom. The driveway parking leads to a carport and garage, with a mature south facing garden to the rear. Broseley cricket club is nearby and the many amenities of Broseley are within easy reach.





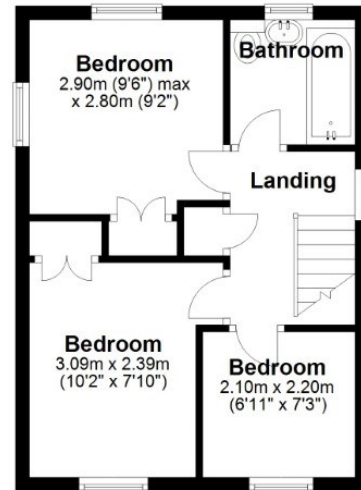
Ground Floor

Approx. 45.1 sq. metres (485.6 sq. feet)



First Floor

Approx. 30.1 sq. metres (323.7 sq. feet)



Total area: approx. 75.2 sq. metres (809.3 sq. feet)

Gorge View

Tenure Freehold **Council tax** Band C

Fixtures & Fittings Where specifically mentioned in these sales particulars are included in the sale price.

N.B Please note, that none of the services, heating systems or any appliances at this property have been tested, therefore no warranty can be given or implied as to their working order. These particulars do not constitute or form a part of any contract. Whilst Harwood Estate Agents and their employees take every care in the preparation of these particulars they hereby state both on behalf of themselves and the vendor that no intending purchaser should rely on any of the statements of representation of fact and the intending purchaser should make his/her own inspection and enquiries in order to satisfy himself/herself of their authenticity and no responsibility is accepted for any error or omission herein.

Details prepared : 21st October 2022vv