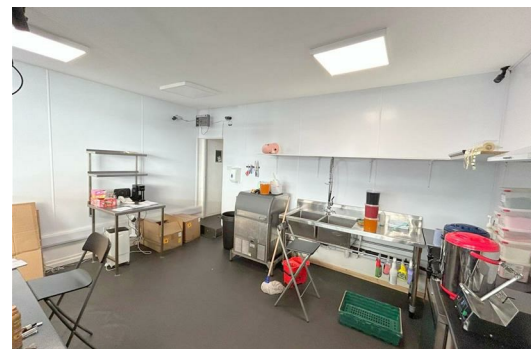




**Unit 14, Halstead House St. James's Row, Burnley  
BB11 1DR**

**£750 PCM**

Hyde Estates present this ground floor retail unit with shopfront and electric shutters. Currently trading as a Bubble tea shop in Burnley town centre. Comprises of retail area, storage and WC. The approx gross area is 508 SQ FT / 47 SQ M.





Description

The unit is accessed via a modern aluminium and glass shop front which leads to a bright retail area, featuring Led light panels and electric wall mounted heaters. To the rear is a storage area, kitchen, and WC. The unit would suit a variety of uses.

The surrounding area is a vibrant mix of retail, dining, nightlife and leisure. Featuring the Charter Walk Shopping Centre and well-known brands such as, Primark, Next, NatWest, Marks And Spencer, Subway, Boots, Costa, Game, McDonald’s together with a multitude of independents ensuring a thriving commercial environment.

Location

Situated on an established parade of shops within Halstead House on St James Row, off St James’s Street in the heart of Burnley. There is easy access to the M65 motorway Junction 10 together with public transport links.

Rent - £9,000 PAX

Measurements

Front retail area: 16’10" x 18’10" / 314 SQ FT  
Kitchen / storage: 16’11” x 9’7" / 161 SQ FT  
WC  
Total approx gross area: 475 SQ FT / 44 SQ M

Property usage – shop and premises

Terms of lease - by negotiation

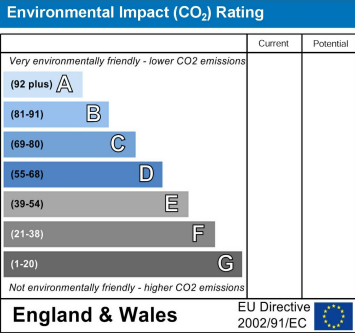
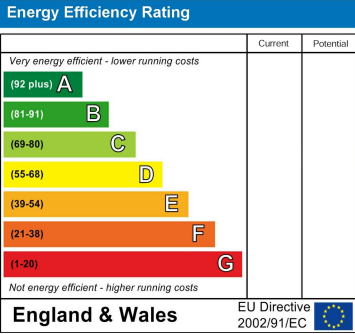
VAT - we understand the property is not liable for VAT

Business rates

The property is described as “shop and premises” with a current rateable value of £7,100 per annum. (This is the rateable value for the property. It is not what you pay in business rates or rent. The local council uses the rateable value to calculate the business rates bill) For further information please contact Burnley Borough Council Business Rates Department on 01282 425011.

Legal costs - each party to bear their own legal costs

Viewings are conducted by Hyde Estate & Letting Agents 0161-773 4583



1 St. Margarets Road, Prestwich, Manchester, M25 2QB