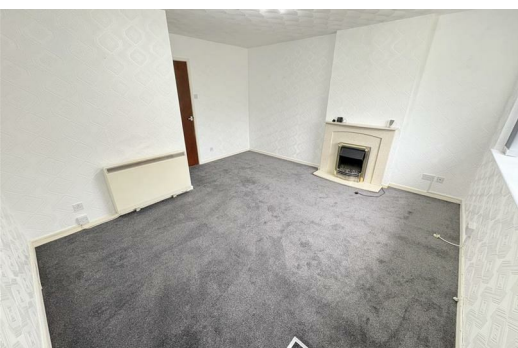




**50A Clyde Road, Manchester  
M26 4PE**

**£795 PCM**

Hyde Estates are delighted to offer this unique one bedroomed bungalow to let. Situated on a quiet cul-de-sac off Turks Road in Radcliffe with off street parking and gardens to the front and rear. Offered unfurnished and available now.



Accommodation

Briefly comprising; carpeted living room with feature fire surround. Internal hallway with access to the kitchen which features a range of wall and base mounted cupboards, free standing electric oven/hob, space for fridge freezer and plumbing for a washing machine. The double bedroom has fitted wardrobes whilst the tiled three piece shower room features an enclosed shower cubicle.

Room Measurements

- Kitchen; 11'10" x 5'3"
- Living room; 14'4" x 13'11"
- Bedroom; 11'2" x 8'4"
- Bathroom; 7'1" x 5'9"

Gardens

Paved front path continuing to the rear via gated side access, opening to a patio and lawned back garden with fenced borders. Shed for storage.

Parking

Driveway parking with gated access to the rear of the property.

Additional Information

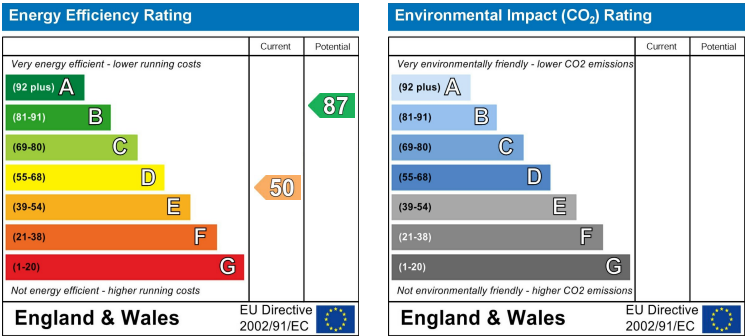
Wall mounted electric heaters and uPVC double glazed units throughout.

Council Tax

Bury Council. Band -TBC

Viewings

To be arranged via Hyde Estate & Letting Agents 0161 773 4583.



1 St. Margarets Road, Prestwich, Manchester, M25 2QB