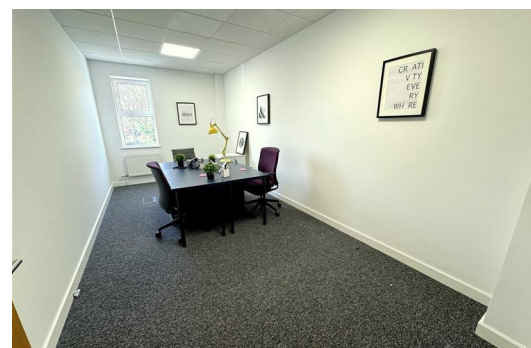




**Suite F27 Cheadle place Stockport Road, Cheadle
SK8 2GL**

£688 Per Month

Hyde Estates present office suite no F14 Biz Space, located 1 mile from Cheadle town centre and just 6 miles from Manchester city centre. The M60 is just 1 minutes drive with buses to Manchester and the surrounding areas only a 5 minute walk away



Hyde Estates present office suite no F27 Biz Space, located 1 mile from Cheadle town centre and just 6 miles from Manchester city centre. The M60 is just 1 minutes drive with buses to Manchester and the surrounding areas only a 5 minute walk away

These office suites are fully decorated and carpeted, have external windows with meeting rooms available to book. They come with 25mbps superfast internet included in the price which allows superfast internet ethernet cabling to each office giving you the choice to run your own VoIP system as well as parking with an electrical charging point onsite. There is an attractive welcoming comfortable and furnished lobby which has access 24 hours a day 365 days a year with secure CCTV for peace of mind with a dedicated locked mailbox. There are kitchens and toilets on each floor and the public areas are cleaned daily, there is also a centre manager on site during working hours in addition to a registered business address facility.

Business Rates

Customers are responsible for paying their own business rates

Furnishings

All offices are provided with a blank canvass so that customers can put their own mark on it.

Office cleaning

Offices are not serviced but cleaning of all communal areas windows and the building itself are included.

Heating and Lighting

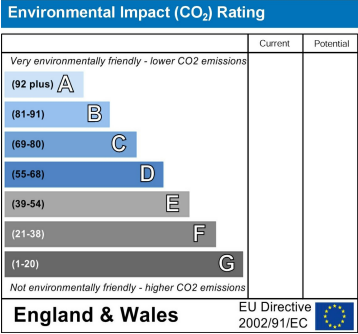
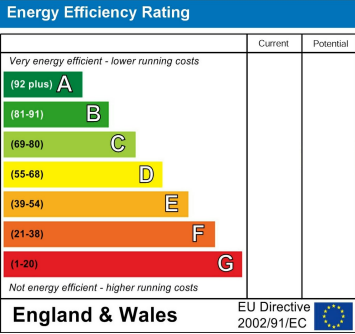
These are included in the price

Size

173 Sq.ft

Terms - lease by negotiation

Viewings - please contact Hyde Estate & Letting Agents 0161-773 4583.



1 St. Margarets Road, Prestwich, Manchester, M25 2QB