



Wilmere Lane, Widnes, Cheshire WA8 5UP
£895,000



A stunning secluded highly desirable south facing detached home in a sought after area, set in approximately 1.2 acres of mature grounds. This unique property needs to be viewed to appreciate the large, light and bright accommodation with contemporary finish throughout.

The spacious accommodation briefly comprises:- large lounge with feature stone fireplace and log burner. French doors opening onto large south facing garden, reception room with large picture window, large stunning bespoke kitchen/diner with a fantastic range of wall and base units, central Island and integral appliances, study and downstairs cloakroom/wc., large utility room, porch.

To the first floor there are four bright double bedrooms all with large picture windows, master with en suite shower room, family bathroom.

Externally York stone courtyard with stone built double garage and double car port with parking for several cars.

Spacious wrap around mature garden with beautiful large trees and shrubs.

Large Indian stone paved patio with large pergola for al fresco entertaining, feature pond with fountain.

Freehold. Council tax band E.

Viewing strictly through Stapleton Derby Rainhill office.





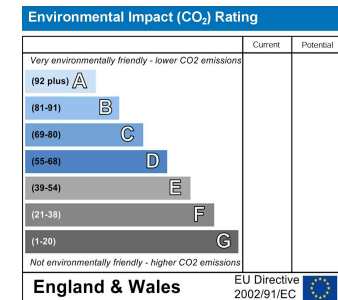
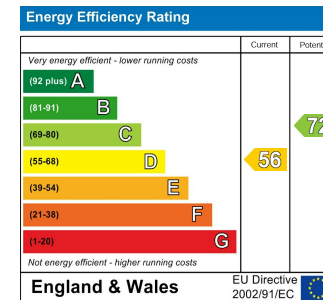
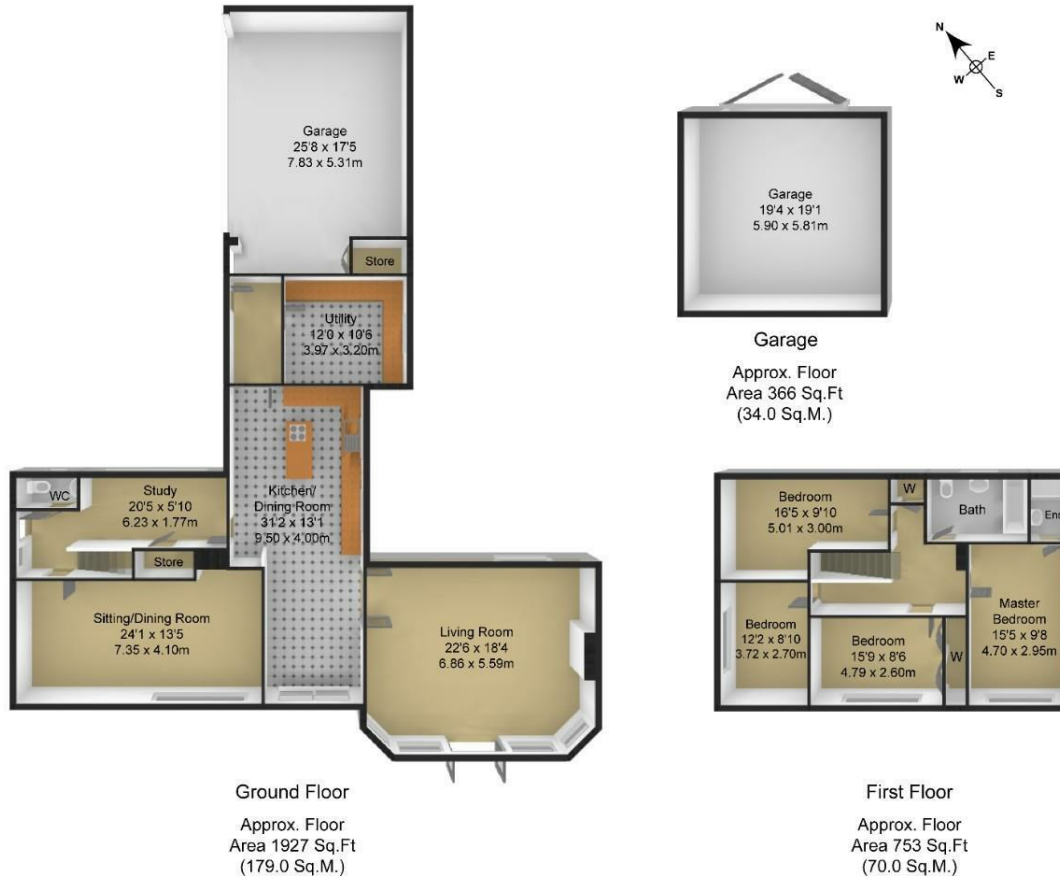




Wilmere Park

Total Approx. Floor Area 3046 Sq.ft. (283.0 Sq.M.)

Surveyed and drawn by Lens Media for illustrative purposes only. Not to scale. Whilst every attempt was made to ensure the accuracy of the floor plan, all measurements are approximate and no responsibility is taken for any error.



IMPORTANT NOTE TO PURCHASERS

We endeavour to make our sales particulars accurate and reliable, however, they do not constitute or form part of an offer or any contract and none is to be relied upon as statements of representation or fact. Any services, systems and appliances listed in this specification have not been tested by us and no guarantee as to their operating ability or efficiency is given. All measurements have been taken as a guide to prospective buyers only, and are not precise. If you require clarification or further information on any points please contact us. Fixtures and fittings other than those mentioned are to be agreed with the seller.