



# STAPLETON DERBY



Hardshaw Street, St. Helens, WA10 1JU

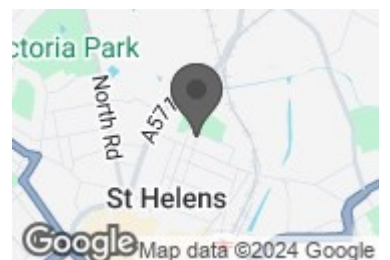
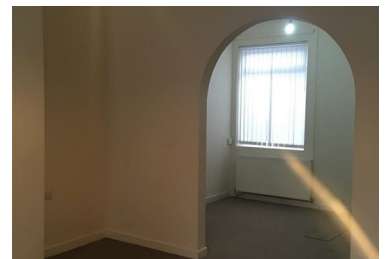
£750 PCM



Stapleton Derby are pleased to offer for let this mid terraced property close to St Helens town centre. Convenient for local amenities, public transport, rail links and motorway network. The property briefly comprises, through lounge, kitchen, ground floor bathroom and two bedrooms. There is an enclosed yard to the rear.

EPC Rating - C  
Council tax band - A  
Rent - £750  
Deposit - £865.38

- Double Glazing
- Through Lounge
- Bathroom
- Enclosed Yard to Rear
- Gas Central Heating
- Kitchen
- Two Bedrooms
- Permit Parking



73-75 Corporation Street, St Helens, WA10 1SX

Tel: 01744 883 322 Email: [info@stapletonderby.co.uk](mailto:info@stapletonderby.co.uk) [www.stapletonderby.co.uk](http://www.stapletonderby.co.uk)