



# STAPLETON DERBY

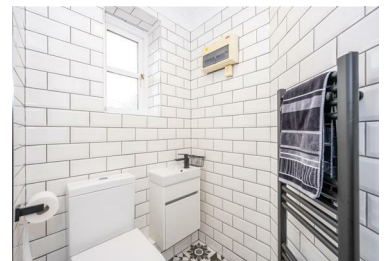


Hesketh Court, St. Helens, WA11 8QR

£314,950



This beautiful modern link detached three bedroom residence provides exceptional spacious living space and a wonderful flowing floorplan with real flexibility, perfect for modern day living. Occupying a private position in an extremely desirable location and not overlooked to the rear with views of farm land this exceptional property simply has to be viewed to be fully appreciated. This property provides spacious living accommodation especially now that the former garage has been converted open plan kitchen/Diner giving the house two large reception rooms, fitted kitchen utility area and a downstairs WC. Upstairs there are three bedrooms, en suite to master and a family bathroom creating a lovely home. We would strongly advise the early viewing of this beautiful home to appreciate all that it has to offer.



- FREEHOLD
- THREE BEDROOMS
- DOWNSTAIRS WC
- VIEWS OVER LOOKING COUNTRYSIDE
- VIEWING HIGHLY RECOMMENDED
- COUNCIL TAX D EPC C
- TWO BATHROOMS
- ENCLOSED REAR GARENS
- PARKING FOR 2 CARS
- OPEN PLAN KITHCEN/DINER LOUNGE

1 The Old Smithy, Church Road, Rainford, St Helens, WA11 8HD

Tel: 01744 889 999 Email: [office@stapletonderby.co.uk](mailto:office@stapletonderby.co.uk) [www.stapletonderby.co.uk](http://www.stapletonderby.co.uk)