



# STAPLETON DERBY



Cloughton Street, St. Helens, WA10 1SN

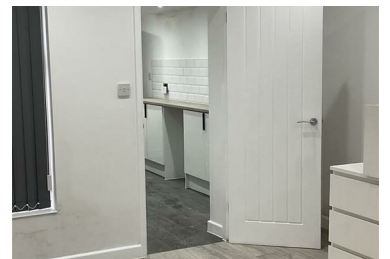
£600 Per Month



We are pleased to present this outstanding, recently decorated commercial property for lease, centrally located in the heart of St Helens.

This spacious property, situated on Cloughton Street, has ample natural light through its large, front windows. It offers a generous floor area, ideal for various retail ventures. Additionally, the property features convenient amenities such as a kitchen, WC, and storage space situated at the rear. Access to the car park is provided through the rear of the premises, facilitating easy loading and unloading activities. Car parking space for one vehicle.

For added convenience, prepaid parking is available directly in front of the property, ensuring hassle-free access for customers and clients.



73-75 Corporation Street, St Helens, WA10 1SX

Tel: 01744 883 322 Email: [info@stapletonderby.co.uk](mailto:info@stapletonderby.co.uk) [www.stapletonderby.co.uk](http://www.stapletonderby.co.uk)