



7 Deepdale Drive, Prescot, L35 4NL

Offers In The Region Of £240,000



*****NO CHAIN*** PRIME FAMILY HOME*****

Stapleton Derby proudly showcases this spacious three-bedroom, semi-detached residence with a detached garage, on a prominent corner plot, located on the outskirts of Rainhill Village. This exceptional dwelling boasts a premium locale, in close proximity to esteemed schools, dining venues, shops, and an array of Rainhill's conveniences. Its strategic positioning ensures seamless access to the M62 and M57 motorways, simplifying journeys to Liverpool and Manchester.

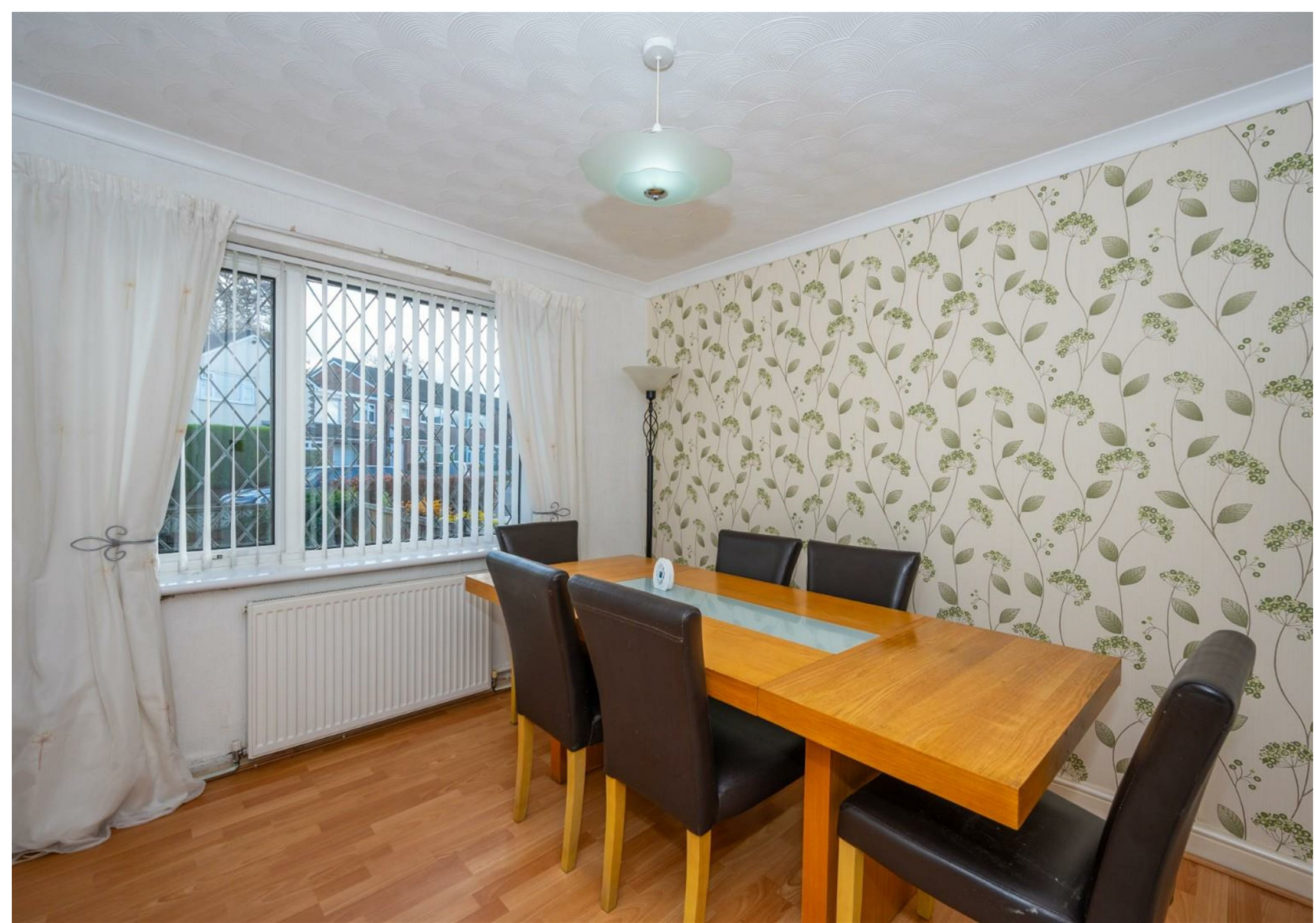
The property comprises a porch, entrance hallway, living room, dining room, kitchen, and conservatory. Upstairs, three comfortably sized bedrooms and a family bathroom await. Outside, the distinguished corner plot features well kept lawns and off-road parking alongside a detached garage.

Don't miss the opportunity to view this property early. With no ongoing chain, it presents an appealing option for homebuyers.

FREEHOLD - The land in this title is subject to a perpetual yearly rent-charge of £5 per year.

EPC - C

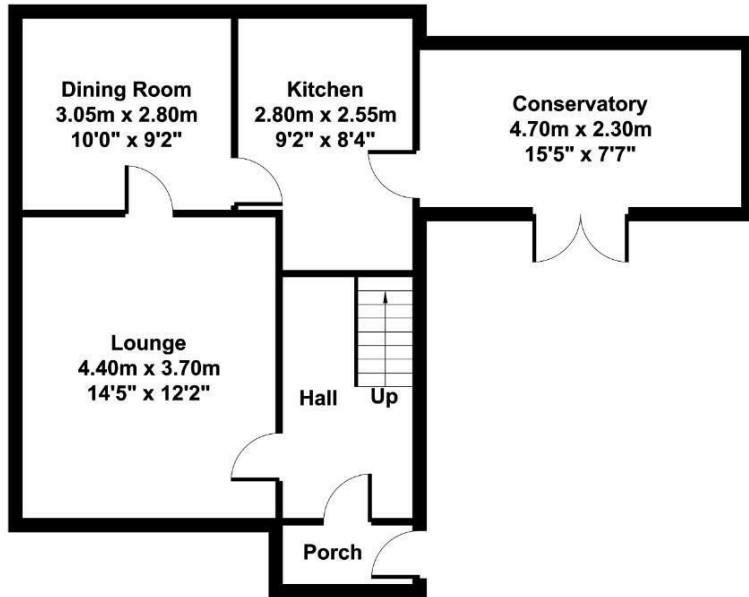




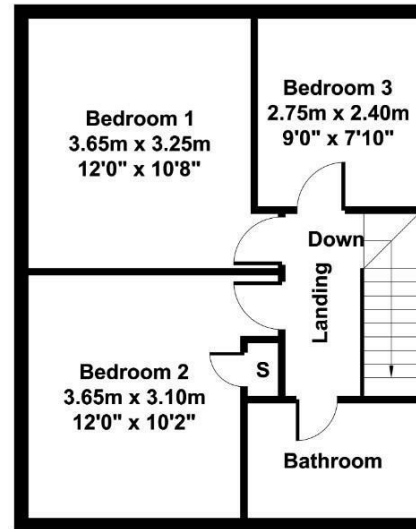




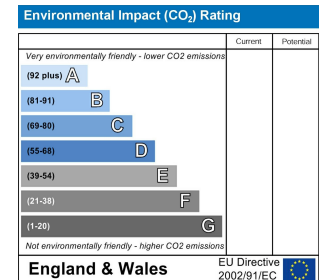
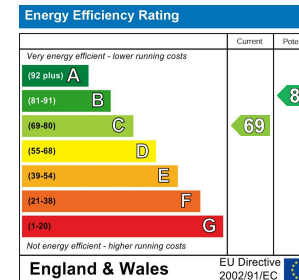
Stapleton Derby
 497 Warrington Road Rainhill, Merseyside, L35 0LR
 Tel: 0151 430 0717
 office@stapletonderby.co.uk
 www.stapletonderby.co.uk



Ground Floor



First Floor



IMPORTANT NOTICE TO PURCHASERS

We endeavor to make our sales particulars accurate and reliable, however, they do not constitute or form part of an offer or any contract and none is to be relied upon as statements of representation or fact. Any services, systems and appliances listed in this specification have not been tested by us and no guarantee as to their operating ability or efficiency is given. All measurements have been taken as a guide to prospective buyers only, and are not precise. If you require clarification or further information on any points please contact us. Fixtures and fittings other than those mentioned are to be agreed with the seller.