

Lower Furney Close

High Wycombe • Buckinghamshire • HP13 6XQ

Guide Price: £200,000



coopers
est 1986

Lower Furney Close

High Wycombe • Buckinghamshire • HP13 6XQ

A two bedroom apartment situated on Lower Furney Close, a popular resident road in High Wycombe within close proximity to a number of highly regarded schools, local shops and High Wycombe station. The property comprises spacious hallway with doors leading to the 17ft living room, 11ft kitchen, 11ft main bedroom, 8ft second bedroom and family bathroom. Outside there are communal gardens and allocated parking.

Two bedroom apartment

Ideal for investment

Immaculately kept

Close to local amenities

17ft living room

11ft kitchen

11ft main bedroom

8ft second bedroom

Communal gardens

Allocated parking

These particulars are intended as a guide and must not be relied upon as statements of fact. Your attention is drawn to the Important Notice on the last page.





Property

This stylish and spacious two bedroom apartment offers a great opportunity for first-time buyers and investors alike. The property comprises spacious hallway with doors leading to the 17ft living room, 11ft kitchen, 11ft main bedroom, 8ft second bedroom and family bathroom.

Outside

Outside there are well kept communal gardens and allocated parking.

Location

Lower Furney Close is a popular residential road in High Wycombe. It's primarily a quiet suburban neighborhood characterized by family homes, green spaces, and local amenities. The area is well-connected, with good access to public transport and major roads, making it convenient for commuters. Surrounding Lower Furney Close, you'll find several parks and natural areas, like Hughenden Park and the scenic Chiltern Hills, which offer great opportunities for walking, cycling, and enjoying nature. The town center of High Wycombe is not far away, providing shopping, dining, and cultural attractions, including the Wycombe Swan Theatre and various local markets.



Schools:

The Royal Grammar School 0.4 miles
Aspire 0.4 miles
Highworth Combined School and Nursery 0.6 miles



Train:

High Wycombe Station 0.6 miles
Bourne End Station 4.2 miles
Beaconsfield Station 4.3 miles



Car:

M4, A40, M25, M40



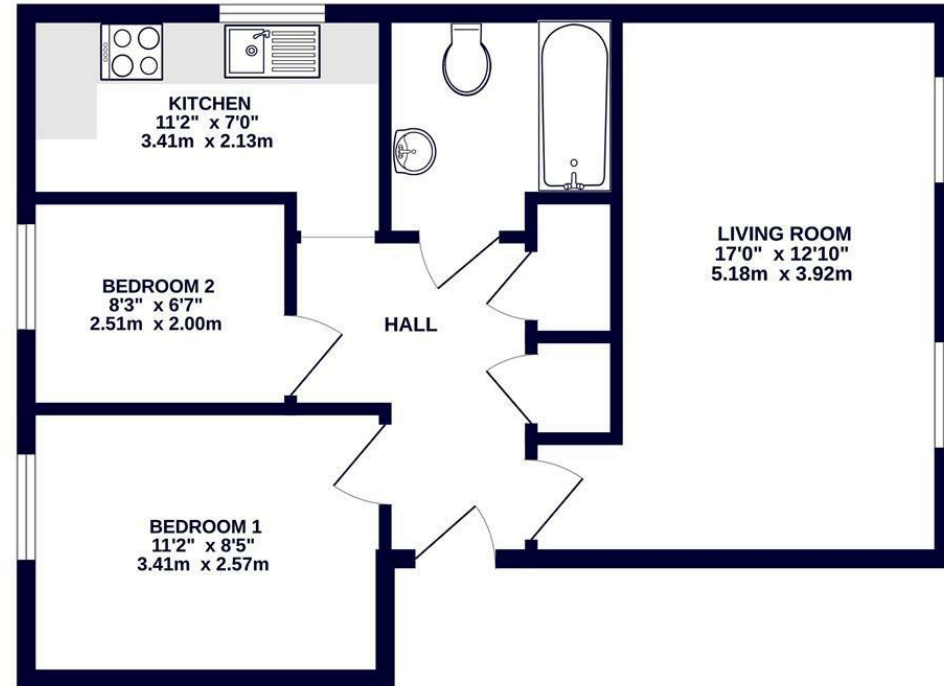
Council Tax Band:

C

(Distances are straight line measurements from centre of postcode)



GROUND FLOOR 528 sq.ft. (49.1 sq.m.) approx.



TOTAL FLOOR AREA : 528 sq.ft. (49.1 sq.m.) approx.

Whilst every attempt has been made to ensure the accuracy of the floorplan contained here, measurements of doors, windows, rooms and any other items are approximate and no responsibility is taken for any error, omission or mis-statement. This plan is for illustrative purposes only and should be used as such by any prospective purchaser. The services, systems and appliances shown have not been tested and no guarantee as to their operability or efficiency can be given.
Made with Metropix ©2024

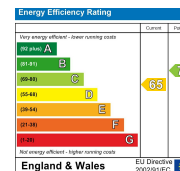


01895 230 103

109 Hillingdon Hill, Hillingdon Village,
Middlesex, UB10 0JQ

hillingdon@coopersresidential.co.uk

CoopersResidential.co.uk



Important Notice: These particulars, whilst believed to be accurate are set out as a general outline only for guidance and do not constitute any part of an offer or contract. Intending purchasers should not rely on them as statements or representation of fact, but must satisfy themselves by inspection or otherwise has the authority to make or give any representation or warranty in respect of the property.