

Symonds
& Sampson

Lewesdon
Court

Lewesdon Court
Silver Street, Lyme Regis, Dorset

Lewesdon

Court

Silver Street
Lyme Regis
DT7 3HU

Delightful two bedroom top floor apartment with sea views just a short step to both the beach and shops.



- Popular seaside town
- Communal gardens
- Garage and parking
- Scope for improvement
- Views over town towards the sea

Guide Price **£230,000**

Leasehold

Bridport Sales
01308 422092
bridport@symondsandsampson.co.uk



THE DWELLING

This property is one of 12 spacious apartments beautifully positioned above Broad St - the principal shopping street - a short walk to both the beach and the shops. The apartment lies on the second floor with the main living room taking the best of the views to the sea across the Lyme Regis town roofscape.

ACCOMMODATION

The apartment is simply laid out with a hallway running through the centre with, on the south side, a spacious sitting room and a fully fitted kitchen equipped with both electric hob and an electric oven. A breakfast bar divides the kitchen and the sitting room. There are two good double bedrooms, each having built-in double wardrobes, that share a fully tiled shower room. The property is in good decorative order throughout and has contemporary electric heating.

OUTSIDE

There are communal gardens to both the front and rear of the apartment block for the use of all, along with a drying area. There is a garage underneath the building and parking in front.

SITUATION

Lyme Regis is a most popular and picturesque coastal town noted for its attractive period buildings, the famous centuries-old Cobb and harbour. In the town is an excellent selection of facilities including many independent shops, convenience stores and a number of restaurants and hotels, together with a theatre and various museums. A short walk from the high street is the charming award-winning sandy beach, ideal for families; the harbour, popular with anglers and those keen on deep sea fishing trips; the sailing and power boat clubs.

DIRECTIONS

What3words:///yummy.kitchens.nothing

SERVICES

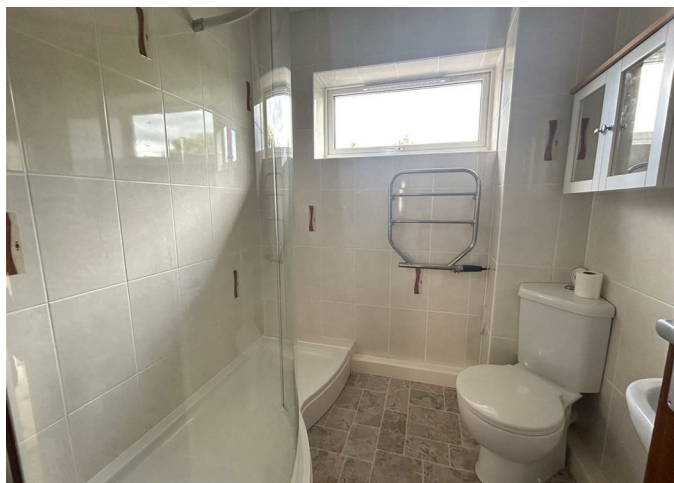
Mains water, drainage and electric. Electric heating.

Broadband - Ultrafast speed available.

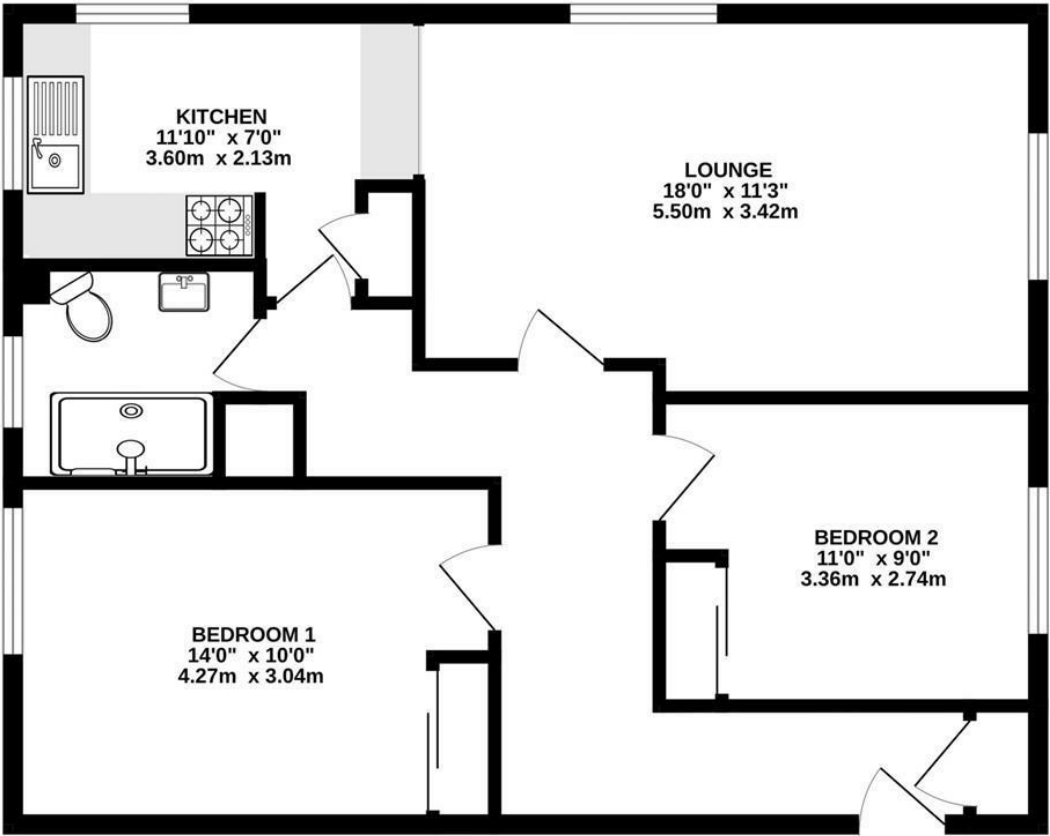
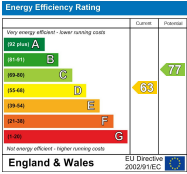
Mobile - There is mobile coverage in the area, please refer to Ofcom's website for more details. <https://checker.ofcom.org.uk/>
Council Tax Band: C (Dorset Council - 01305 251010)
EPC: D

MATERIAL INFORMATION

Lease plus the share of the freehold 199 years from 2002. The 12 shareholders of Lewesdon Court Maintenance Ltd pay a monthly charge of £140. Well-behaved pets are allowed.



SECOND FLOOR



Bridport/SVA/31072025



Measurements are approximate. Not to scale. Illustrative purposes only.

01308 422092

bridport@symondsandsampson.co.uk
Symonds & Sampson LLP
23, South Street,
Bridport, Dorset DT6 3NU



important notice: Symonds & Sampson LLP and their Clients give notice that: 1. They have no authority to make or give any representations or warranties in relation to the property. These particulars do not form part of any offer or contract and must not be relied upon as statements or representations of fact. 2. Any areas, measurements or distances are approximate. The text, photographs and plans are for guidance only and are not necessarily comprehensive. It should not be assumed that the properties have all necessary planning, building regulation or other consents and Symonds and Sampson LLP have not tested any services, equipment or facilities. 3. We have not made any investigation into the existence or otherwise of any issues concerning pollution of the land, air or water contamination and the purchaser is responsible for making his/her own enquiries in this regard. 4. The property is sold subject to and with the benefit of all existing wayleaves, easements and rights of way whether public or private, specifically mentioned or not. The vendors shall not be required to define any such rights, privileges or advantages.

SALES | LETTINGS | AUCTIONS | FARMS & LAND | COMMERCIAL | NEW HOMES | PLANNING & DEVELOPMENT