



Symonds
& Sampson

Main Street

Bothenhampton, Bridport, Dorset

Main Street

Bothenhampton
Bridport
Dorset DT6 4BL

A beautifully presented three bedroom cottage situated in the heart of the popular village of Bothenhampton.



- Beautifully presented throughout
 - Charming cottage
 - Delightful rear garden
 - Popular village location

Guide Price £400,000
Freehold

Bridport Sales
01308 422092
bridport@symondsandsampson.co.uk



THE DWELLING

A charming end of terrace cottage situated in the popular village of Bothenhampton, with a large rear garden enjoying elevated views to the surrounding countryside. The cottage has been sympathetically improved over the years, blending character features with modern conveniences, and now presents in excellent order throughout.

ACCOMMODATION

The accommodation is arranged over three floors, with an open plan living/dining room to the front with a fireplace equipped with a woodburning stove as a focal point. The contemporary kitchen is to the rear with a door onto the garden, and is fitted with a comprehensive range of wall and base units with integrated appliances including an electric oven, gas hob, dishwasher and washing machine with space for additional appliances.

On the first floor are two double bedrooms and the family bathroom, which is fitted with a white suite comprising a bath, separate shower, W/C and sink. Stairs rise to a further double bedroom with Velux windows to the front and rear, taking in delightful views over the garden and to the distant countryside.

OUTSIDE

The gardens are a particular feature, extending just over

200ft. A paved terrace immediately adjoins the kitchen, with steps leading up to the main body of the garden and an additional seating area. The remainder of the garden is predominantly laid to lawn with mature borders and a wildflower area to the rear with a further seating area at the top, taking in the wonderful elevated views to the surrounding countryside. There is on street parking available on a first come first serve basis.

SERVICES

Mains gas, electricity, water and drainage. Gas fired central heating.

Broadband: Ultrafast broadband is available.

Mobile phone coverage: Network coverage is mostly good indoors and good outdoors. (<https://www.ofcom.org.uk>).

Dorset Council: 01305 251010

Council Tax band: C.

SITUATION

Bothenhampton is a small village on the eastern side of Bridport, with a number of pretty period cottages, a village hall and a playpark. The cottage is close to the Nature Reserve and has access to many footpaths and bridleways. Bridport is a short walk away and is a thriving market town and popular holiday area, where bustling street markets are held twice weekly. The pretty harbour at West Bay, with lovely beaches is close by and the area provides the

opportunity for enjoying the Jurassic Coast, recently designated a World Heritage Site.

DIRECTIONS

What3Words///occupy.quite.nerves



Energy Efficiency Rating		Current	Potential
Energy efficient - lower energy costs			
A	92-100		80
B	81-91		
C	69-80		
D	55-68		
E	45-54		
F	35-44		
G	1-34		
Energy inefficient - higher energy costs			
England & Wales		ED Domestic	2009/10/10

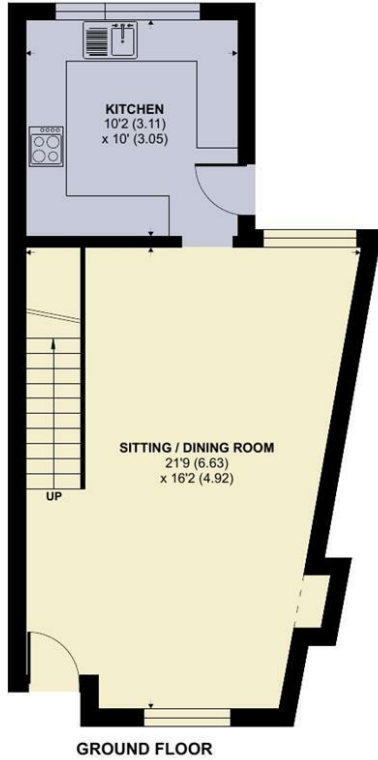
Main Street, Bothenhampton, Bridport

Approximate Area = 980 sq ft / 91 sq m

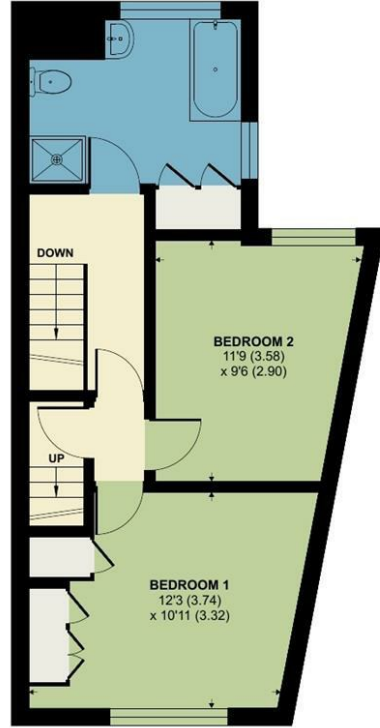
Outbuilding = 41 sq ft / 3.8 sq m

Total = 1021 sq ft / 94.8 sq m

For identification only - Not to scale



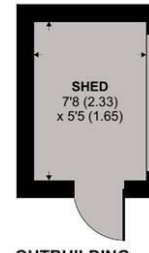
GROUND FLOOR



FIRST FLOOR



SECOND FLOOR



OUTBUILDING



Floor plan produced in accordance with RICS Property Measurement 2nd Edition, Incorporating International Property Measurement Standards (IPMS2 Residential). © nichecom 2025 Produced for Symonds & Sampson. REF: 1279554



Bri/DME/05072025rev



01308 422092

bridport@symondsandsampson.co.uk
Symonds & Sampson LLP
23, South Street,
Bridport, Dorset DT6 3NU



Important Notice: Symonds & Sampson LLP and their Clients give notice that: 1. They have no authority to make or give any representations or warranties in relation to the property. These particulars do not form part of any offer or contract and must not be relied upon as statements or representations of fact. 2. Any areas, measurements or distances are approximate. The text, photographs and plans are for guidance only and are not necessarily comprehensive. It should not be assumed that the properties have all necessary planning, building regulation or other consents and Symonds and Sampson LLP have not tested any services, equipment or facilities. 3. We have not made any investigation into the existence or otherwise of any issues concerning pollution of the land, air or water contamination and the purchaser is responsible for making his/her own enquiries in this regard. 4. The property is sold subject to and with the benefit of all existing wayleaves, easements and rights of way whether public or private, specifically mentioned or not. The vendors shall not be required to define any such rights, privileges or advantages.

SALES | LETTINGS | AUCTIONS | FARMS & LAND | COMMERCIAL | NEW HOMES | PLANNING & DEVELOPMENT