



Meech Close

Bothenhampton, Bridport, Dorset

Meech Close

Bothenhampton

Bridport

Dorset

DT6 4JT

A one bedroom bungalow with a lovely enclosed rear south facing garden in a quiet cul-de-sac, within walking distance of Bridport Town centre and all its amenities.



- Detached one bedroom bungalow
- Walking distance of Bridport Town
- Garage and off-road parking for two cars
 - Quiet cul-de-sac location

Guide Price **£250,000**

Freehold

Bridport Sales
01308 422092

bridport@symondsandsampson.co.uk



THE DWELLING

A detached one bedroom bungalow situated in an elevated position within walking distance of Bridport Town centre and all its amenities. It benefits from a lovely low maintenance south facing garden and views across town from the kitchen and bedroom. It would make an ideal lock and leave or second home.

ACCOMMODATION

The front door is on the side of the house and opens into a small porch and on into the hallway. On the left-hand side is the kitchen which has views over the rooftops to the hills beyond. It has a sink, some base level cupboards, a freestanding electric cooker and hob and open shelves creating additional storage. There is a large wooden kitchen table currently being used as the main work surface area. Along the hallway to the right is the living/dining room which has a stone fireplace that is currently not in use, but would make a good focal point. Double sliding doors open into the south facing conservatory which overlooks the back garden. To the left is a walk-in shower room with a white suite comprising shower, sink and WC. There are two good size storage cupboards in the hall, one which is currently shelved and one which is being used as a cloakroom cupboard. The large double bedroom is dual aspect and overlooks the front garden with more views over Bridport and has a built-in storage cupboard/wardrobe.

OUTSIDE

The front garden is mainly laid to lawn with some mature hedging on the left hand boundary. On the right hand side is a driveway with parking for two cars which leads to a single garage with an up and over door, power and lighting. To the left of the garage is a gate leading to the garden at the rear. The south facing back garden has a level paved path that wraps around the house and access to the garage via a side door. Some stone steps lead up to a seating area surrounded by planting and small trees.

SERVICES

Mains water, electricity and drainage. Gas fired central heating.
Broadband: Superfast speed is available.
Mobile phone coverage: Limited/Likely Indoors and Likely Outdoors (<https://checker.ofcom.org.uk>)
Council Tax Band: B
EPC: D

SITUATION

The property is located in Bothenhampton, a short walk away from the main shopping areas. Bridport is a bustling and vibrant market town which has a history of rope making and is now a gateway to the Jurassic, World Heritage coastline at nearby West Bay. It has a variety of independent shops, supermarkets, public houses and

restaurants catering for a range of tastes and excellent arts and music events. Bridport is conveniently placed for Dorchester and Weymouth to the east and Axminster to the west. Walking, water sports and riding opportunities are plentiful in the area. Communication links are good with road links along the A35 and mainline stations at Maiden Newton, Dorchester, Axminster and Crewkerne.

DIRECTIONS

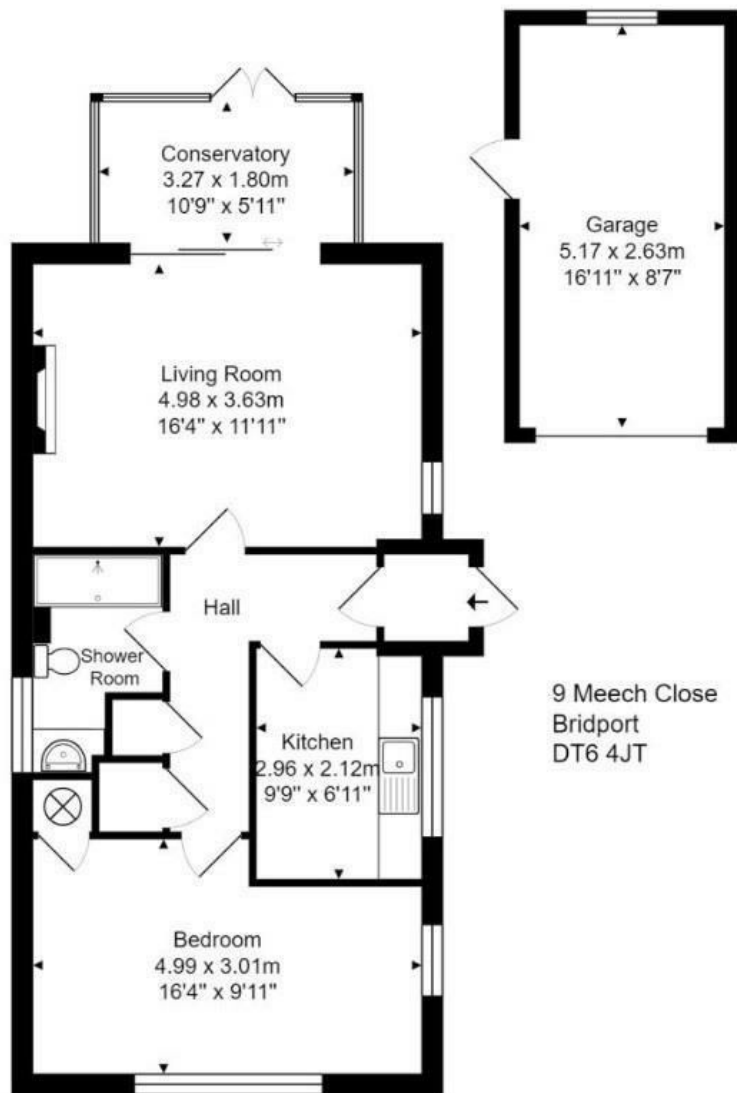
What3words:///underway.conducted.guilty

MATERIAL INFORMATION

There is potential to reopen a stone fireplace to use as a focal point if desired.



Energy Efficiency Rating	
Very energy efficient - lower running costs	
A	87
B	
C	61
D	
E	
F	
G	
England & Wales	
EU Directive 2002/91/EC	



9 Meech Close
Bridport
DT6 4JT

Total Area: 59.4 m² ... 639 ft² (excluding garage)
Not to scale. Measurements are approximate
and for guidance only.



Bri/SVA/290525



01308 422092

bridport@symondsandsampson.co.uk
Symonds & Sampson LLP
23, South Street,
Bridport, Dorset DT6 3NU



Important Notice: Symonds & Sampson LLP and their Clients give notice that: 1. They have no authority to make or give any representations or warranties in relation to the property. These particulars do not form part of any offer or contract and must not be relied upon as statements or representations of fact. 2. Any areas, measurements or distances are approximate. The text, photographs and plans are for guidance only and are not necessarily comprehensive. It should not be assumed that the properties have all necessary planning, building regulation or other consents and Symonds and Sampson LLP have not tested any services, equipment or facilities. 3. We have not made any investigation into the existence or otherwise of any issues concerning pollution of the land, air or water contamination and the purchaser is responsible for making his/her own enquiries in this regard. 4. The property is sold subject to and with the benefit of all existing wayleaves, easements and rights of way whether public or private, specifically mentioned or not. The vendors shall not be required to define any such rights, privileges or advantages.

SALES | LETTINGS | AUCTIONS | FARMS & LAND | COMMERCIAL | NEW HOMES | PLANNING & DEVELOPMENT