



Symonds  
& Sampson

# Clifftop Park

Old Lyme Road, Charmouth, Bridport



# Clifftop Park

Old Lyme Road  
Charmouth  
Bridport  
DT6 6BW

Luxury two bedroom holiday lodge with spectacular coastal views.



- Outstanding sea views
  - Popular location
- Close to coastal footpath and Charmouth village and amenities



Guide Price **£185,000**

Leasehold

Bridport Sales  
01308 422092  
[bridport@symondsandsampson.co.uk](mailto:bridport@symondsandsampson.co.uk)





## THE DWELLING

This two bedroom luxury holiday lodge is one of just five on this exclusive site built in 2005. The lodge enjoys a commanding position on the edge of Charmouth, taking in uninterrupted coastal views towards Stonebarrow, Golden Cap and Portland in the distance.

## ACCOMMODATION

Gated private access leads to the parking area that steps up to the timber decking which wraps around the lodge. The principal living space is open plan, with a kitchen fitted with a comprehensive range of units with an electric oven and hob, integrated washing machine, dishwasher and fridge freezer. The living space has a focal point of a fireplace with an inset electric fire and has French doors out onto the timber decking. The dining area takes in the views over Stonebarrow Hill towards the sea.

There are two bedrooms, the principal of which enjoys the views to the coast and the second being a generous single. These rooms are served by a contemporary shower room fitted with a white suite comprising of a large walk-in shower, WC and sink.

## OUTSIDE

Timber decking with balustrading surrounds the lodge providing several seating and dining areas throughout the

day. A set of stairs leads down to the parking area for two cars. The site has a screened communal bin store and remote control automatic gates.

## SERVICES

Mains electric, drainage and water.

Broadband: Superfast broadband is available.

Mobile phone coverage is likely/limited inside and likely outdoors.

Council Tax Band: Exempt.

EPC: D

## MATERIAL INFORMATION

Leasehold. 125 year lease from October 2024. Service charges include grounds maintenance, ground rent and business rates share. The site cannot be used in February. Holiday letting is permissible during the months of July and August only. Purchasers must have a main property in order to purchase this as a second home for holiday usage. £5,331 pa service charge. paid per quarter.

## SITUATION

The property sits on the western side of Charmouth, a short walk down to the beach in this charming seaside village. Charmouth, which has a number of good shops, public houses and cafes to its centre and lies midway between the former rope-making town of Bridport to the

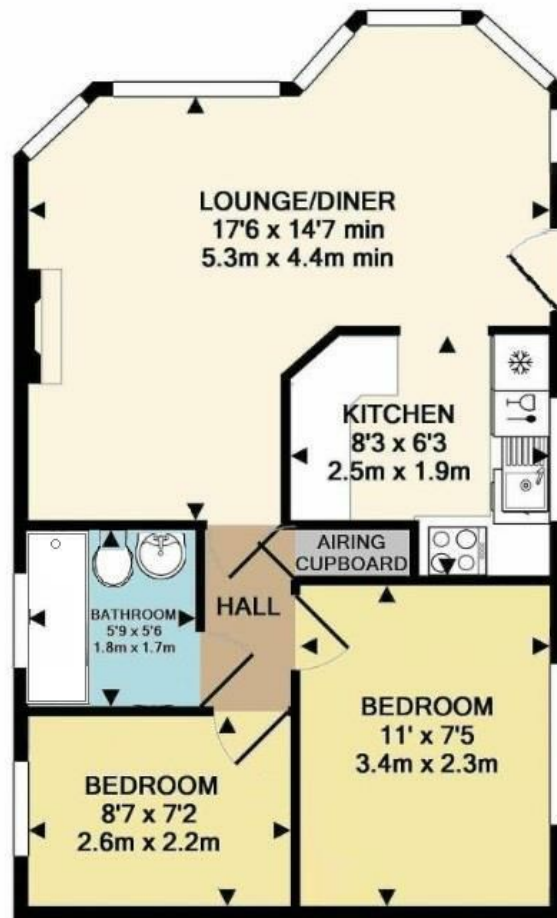
east and the Devon carpet making town of Axminster to the west. The A35 provides the major road link while there are mainline stations at Dorchester and Axminster. Sporting, walking and riding opportunities abound within the area while the world Heritage site Jurassic coastline stretches all the way along Lyme Bay with Charmouth itself being well known for its fossil finds.

## DIRECTIONS

What3words:///threading.landscape.vets



Energy Efficiency Rating		
Very energy efficient - lower running costs		
100-120 kWh/m <sup>2</sup>	A	
80-100 kWh/m <sup>2</sup>	B	
60-80 kWh/m <sup>2</sup>	C	
40-60 kWh/m <sup>2</sup>	D	
20-40 kWh/m <sup>2</sup>	E	
10-20 kWh/m <sup>2</sup>	F	
0-10 kWh/m <sup>2</sup>	G	
<small>For energy efficient - lower running costs</small> <small>England &amp; Wales</small>		



TOTAL APPROX. FLOOR AREA 497 SQ.FT. (46.1 SQ.M.)

Whilst every attempt has been made to ensure the accuracy of the floor plan contained here, measurements of doors, windows, rooms and any other items are approximate and no responsibility is taken for any error, omission, or mis-statement. This plan is for illustrative purposes only and should be used as such by any prospective purchaser. The services, systems and appliances shown have not been tested and no guarantee as to their operability or efficiency can be given  
Made with Metropix ©2018

Bridport/DM/210525



01308 422092

bridport@symondsandsampson.co.uk  
Symonds & Sampson LLP  
23, South Street,  
Bridport, Dorset DT6 3NU



Important Notice: Symonds & Sampson LLP and their Clients give notice that: 1. They have no authority to make or give any representations or warranties in relation to the property. These particulars do not form part of any offer or contract and must not be relied upon as statements or representations of fact. 2. Any areas, measurements or distances are approximate. The text, photographs and plans are for guidance only and are not necessarily comprehensive. It should not be assumed that the properties have all necessary planning, building regulation or other consents and Symonds and Sampson LLP have not tested any services, equipment or facilities. 3. We have not made any investigation into the existence or otherwise of any issues concerning pollution of the land, air or water contamination and the purchaser is responsible for making his/her own enquiries in this regard. 4. The property is sold subject to and with the benefit of all existing wayleaves, easements and rights of way whether public or private, specifically mentioned or not. The vendors shall not be required to define any such rights, privileges or advantages.

SALES | LETTINGS | AUCTIONS | FARMS & LAND | COMMERCIAL | NEW HOMES | PLANNING & DEVELOPMENT