



Symonds
& Sampson

West Bay
Bridport, Dorset

West Bay

Bridport
Dorset
DT6 4HU

Detached three bedroom house set in 3.15 acres with views towards the sea and the surrounding countryside.



- Rare opportunity
- Set in a plot of 3.15 acres
- Flexible accommodation
- Wonderful far reaching views

Guide Price £850,000

Freehold

Bridport Sales
01308 422092
bridport@symondsandsampson.co.uk



THE DWELLING

This classic 1950s chalet bungalow was designed to take full advantage of the wonderful views over the land to the surrounding countryside and towards the coast at West Bay. The property has been well maintained over the years and sits in a plot of 3.15 acres, with a substantial barn, double garage and stables; a rare opportunity indeed.

ACCOMMODATION

The accommodation is arranged around a spacious hallway with the ground floor traditionally set up with the living room to one side and the dining room to the other. These reception rooms both have bay windows overlooking the land and Parana pine flooring which flows through the whole accommodation. The living room has a tiled fireplace as its focal point, equipped with a wood burning stove. The kitchen is to the rear, with space for a dining table and an oil fired Aga to one side. There is a comprehensive range of floor and wall mounted units while to one side a door leads through to a useful utility/boot room. There is a bedroom to the ground floor with French doors onto the garden, and a shower room.

Upstairs are two double bedrooms, both enjoying elevated views with the principal bedroom facing south, taking in views towards the sea. These rooms are served by a spacious family bathroom which is fitted with a white suite comprising a bath, large walk-in shower, wc and sink.

OUTSIDE

The property is approached over a private driveway, with the main area of parking sitting behind, providing access to the double garage with power and light. Further parking is available on the entrance track into the fields. Immediately surrounding the property is a delightful garden, with areas of lawn with mature planted stone borders. Adjacent to the garden is a paddock with a large open fronted barn with an attached workshop. Below here is an orchard and a series of paddocks with stabling and separate gated access onto the driveway.





SERVICES

Mains water and electricity. Oil fired central heating.
Private drainage.
Broadband: Ultrafast broadband is available.
Mobile phone coverage: Network coverage is mostly good indoors and good outdoors. (<https://www.ofcom.org.uk>)
Dorset Council: 01305 251010
Council Tax band: E.

SITUATION

West Bay is a popular holiday area with a working harbour, recently constructed piers, and a choice of beaches.

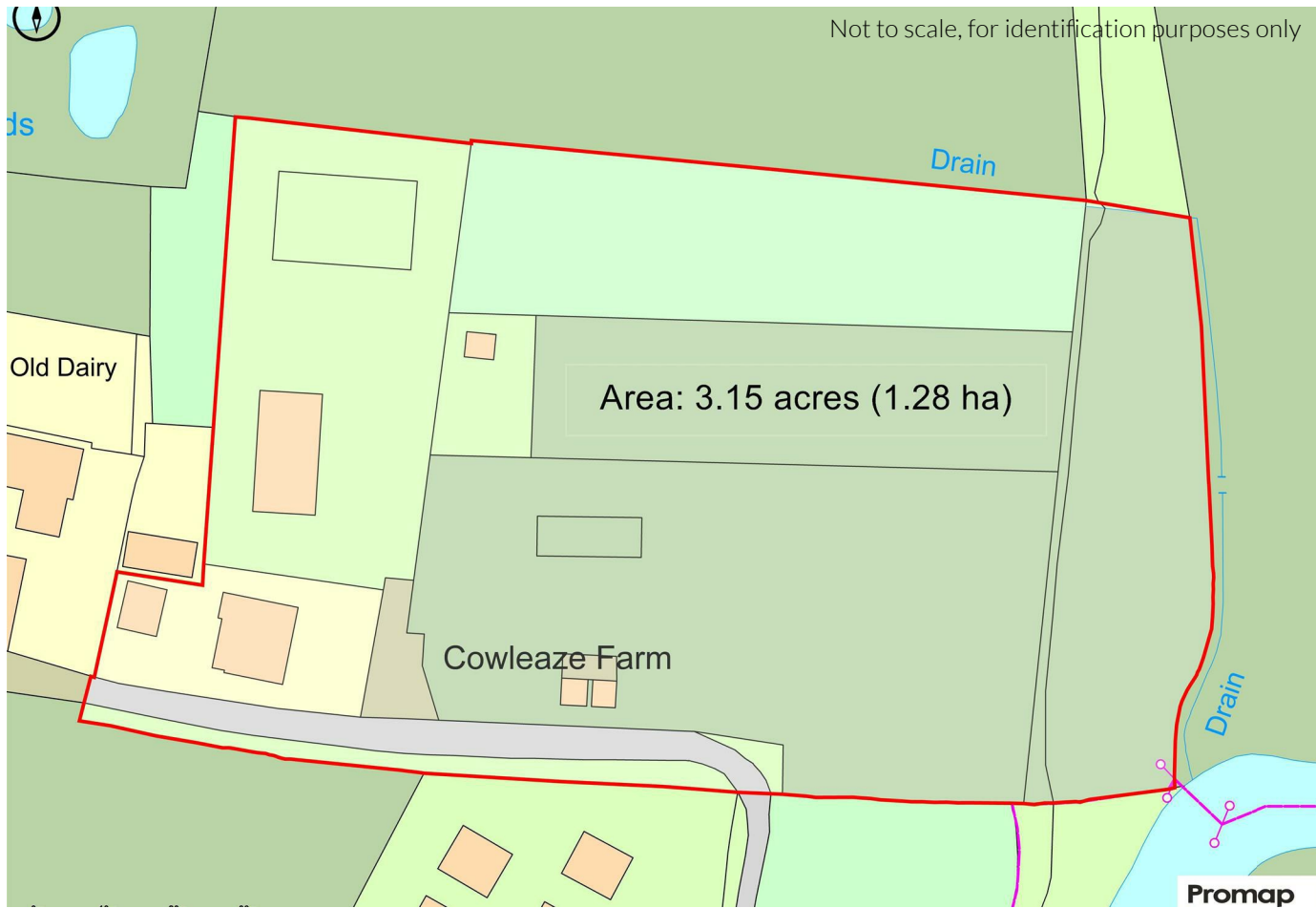
Amenities in the village include pubs, restaurants, cafes, galleries, antiques arcade and various shops, including a fishmonger. The area is popular for scuba diving, sailing, fishing and walking. The bustling market town of Bridport is close by with a variety of independent shops, supermarkets, public houses and restaurants catering for a range of tastes and excellent arts and music events. Communication links are good with road links along the A35 and mainline stations at Maiden Newton, Crewkerne, Dorchester and Axminster.

MATERIAL INFORMATION

There is a public footpath along the boundary of the property which is separated from the land by a fence. Please see plan for details. The neighbour has a right of way over the driveway to access their property. The paddocks are for agricultural use only.

DIRECTIONS

What3Words///replenish.reflector.shared

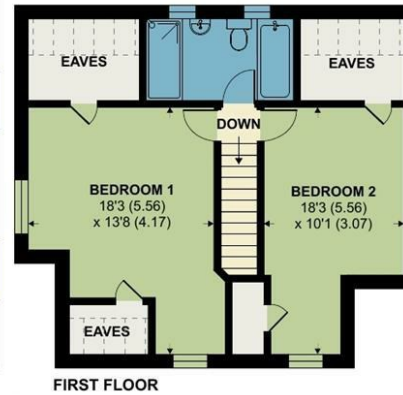
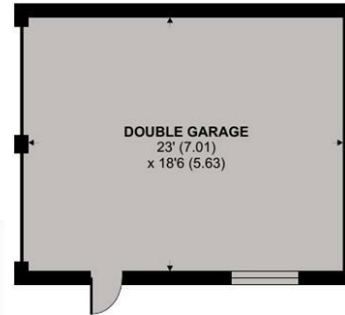
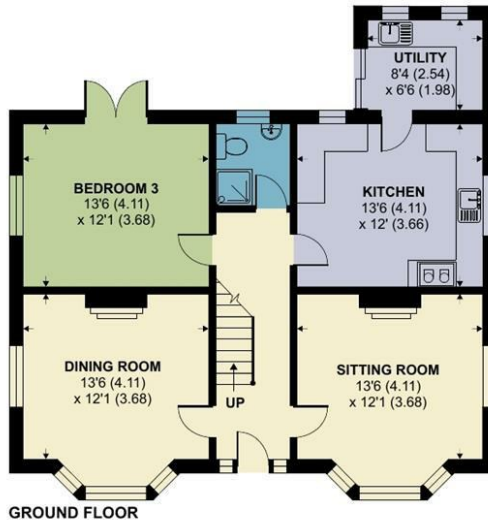
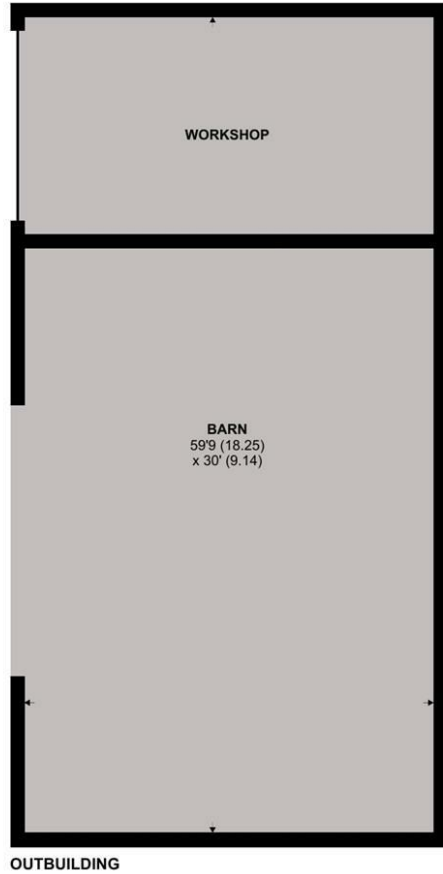


West Bay, Bridport

Approximate Area = 1501 sq ft / 139.4 sq m
 Limited Use Area(s) = 57 sq ft / 5.3 sq m
 Garage = 432 sq ft / 40.1 sq m
 Outbuilding = 1810 sq ft / 168.2 sq m
 Total = 3800 sq ft / 353 sq m

For identification only - Not to scale

Denotes restricted
head height



Floor plan produced in accordance with RICS Property Measurement 2nd Edition, Incorporating International Property Measurement Standards (IPMS2 Residential). Produced for Symonds & Sampson. REF: 1281413

© nitchem 2024.



Energy Efficiency Rating		Current	Target
Very energy efficient - lower running costs	A		
Energy efficient	B		
Decent	C		
Below average	D		
Below average	E		
Below average	F		
Below average	G		
Very energy inefficient - higher running costs			
England & Wales		77	48
		EU Directive 2002/91/EC	



Bri/SVA/010525



01308 422092

bridport@symondsandsampson.co.uk
 Symonds & Sampson LLP
 23, South Street,
 Bridport, Dorset DT6 3NU



Important Notice: Symonds & Sampson LLP and their Clients give notice that: 1. They have no authority to make or give any representations or warranties in relation to the property. These particulars do not form part of any offer or contract and must not be relied upon as statements or representations of fact. 2. Any areas, measurements or distances are approximate. The text, photographs and plans are for guidance only and are not necessarily comprehensive. It should not be assumed that the properties have all necessary planning, building regulation or other consents and Symonds and Sampson LLP have not tested any services, equipment of facilities. 3. We have not made any investigation into the existence or otherwise of any issues concerning pollution of the land, air or water contamination and the purchaser is responsible for making his/her own enquiries in this regard. 4. The property is sold subject to and with the benefit of all existing wayleaves, easements and rights of way whether public or private, specifically mentioned or not. The vendors shall not be required to define any such rights, privileges or advantages.

SALES | LETTINGS | AUCTIONS | FARMS & LAND | COMMERCIAL | NEW HOMES | PLANNING & DEVELOPMENT